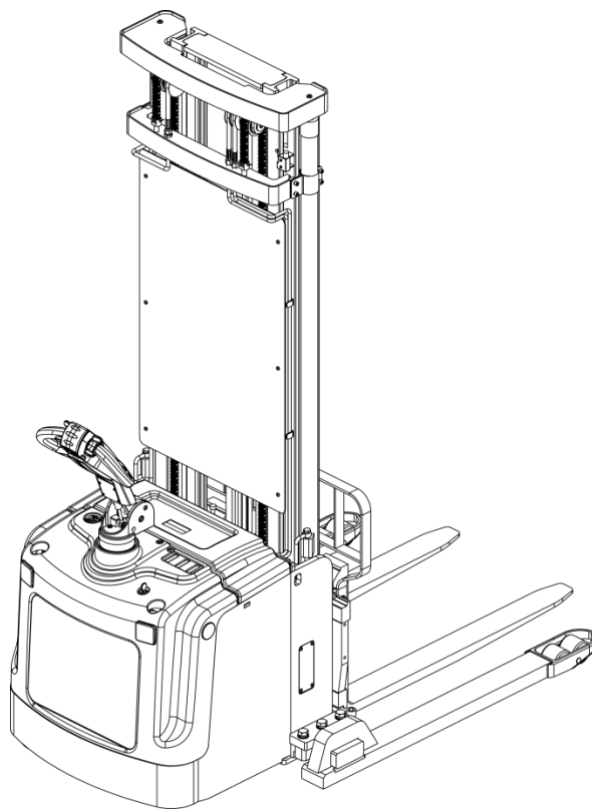


Part list

Walkie Electric Stacker with side shifter

EB16EAS-189li

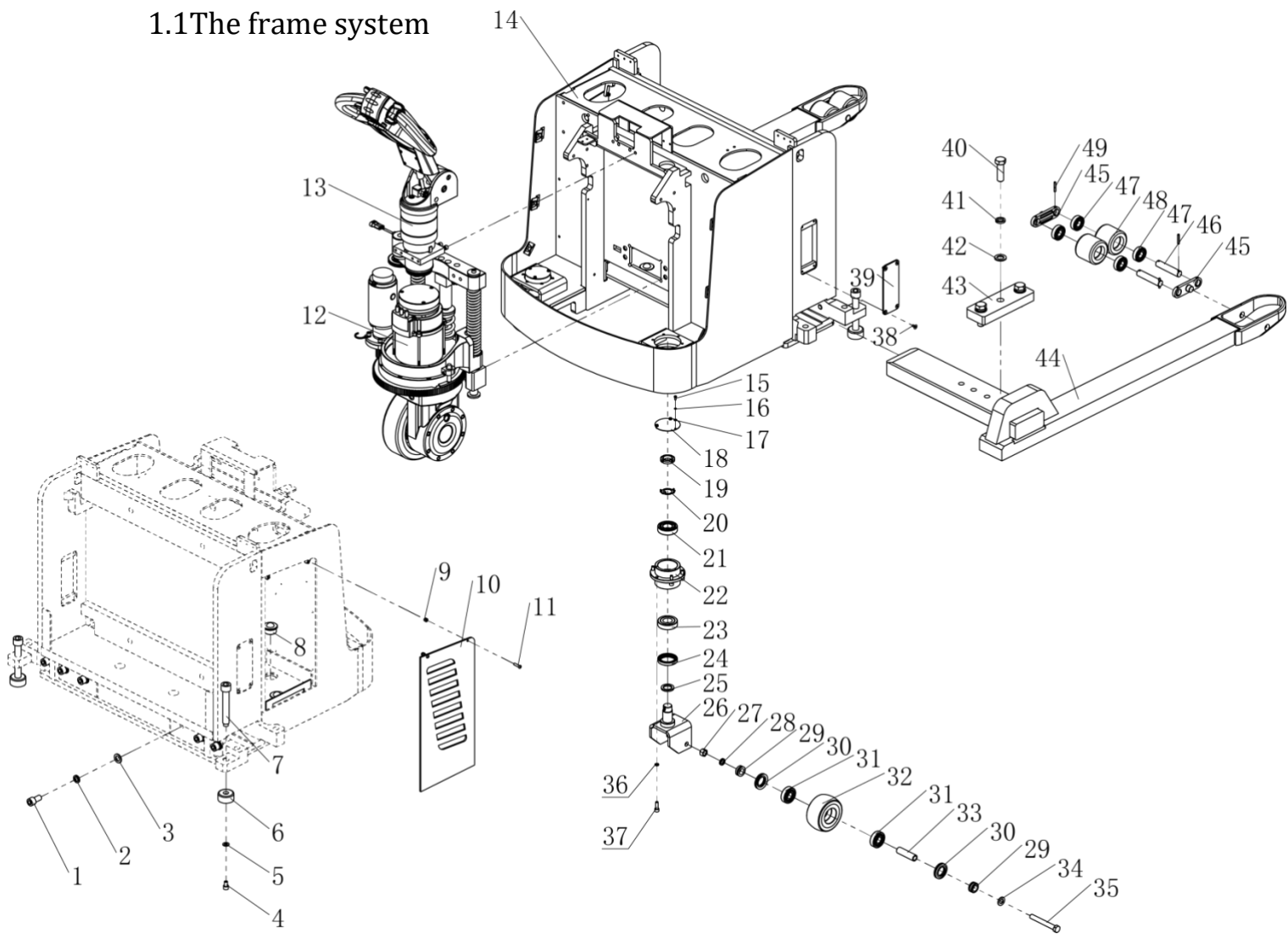


Contents

1.Bodywork system	3
1.1The frame system.....	3
1.1.1Handle assembly (aluminum).....	6
1.1.2Driving assembly	9
2.Electrical assembly	11
2.1Electrical assembly	11
3.Hydraulic system	13
3.1Bodywrok hydraulic.....	13
3.2Lifting Hydraulic system	15
3.3Side shifter Hydraulic system	17
4.Door frame	19
4.1Triple mast assembly with full free lifting	19
4.1.1Outer frame welding.....	21
4.1.2Middle frame welding	23
4.1.3Inner frame welding	25
4.1.4 Fork holder Assembly	27
4.1.5Combination roller assembly.....	29
4.2Chain assembly.....	30
4.3Chain assembly.....	32
5.Cover assembly.....	34
5.1Cover assembly	34

1.Bodywork system

1.1The frame system

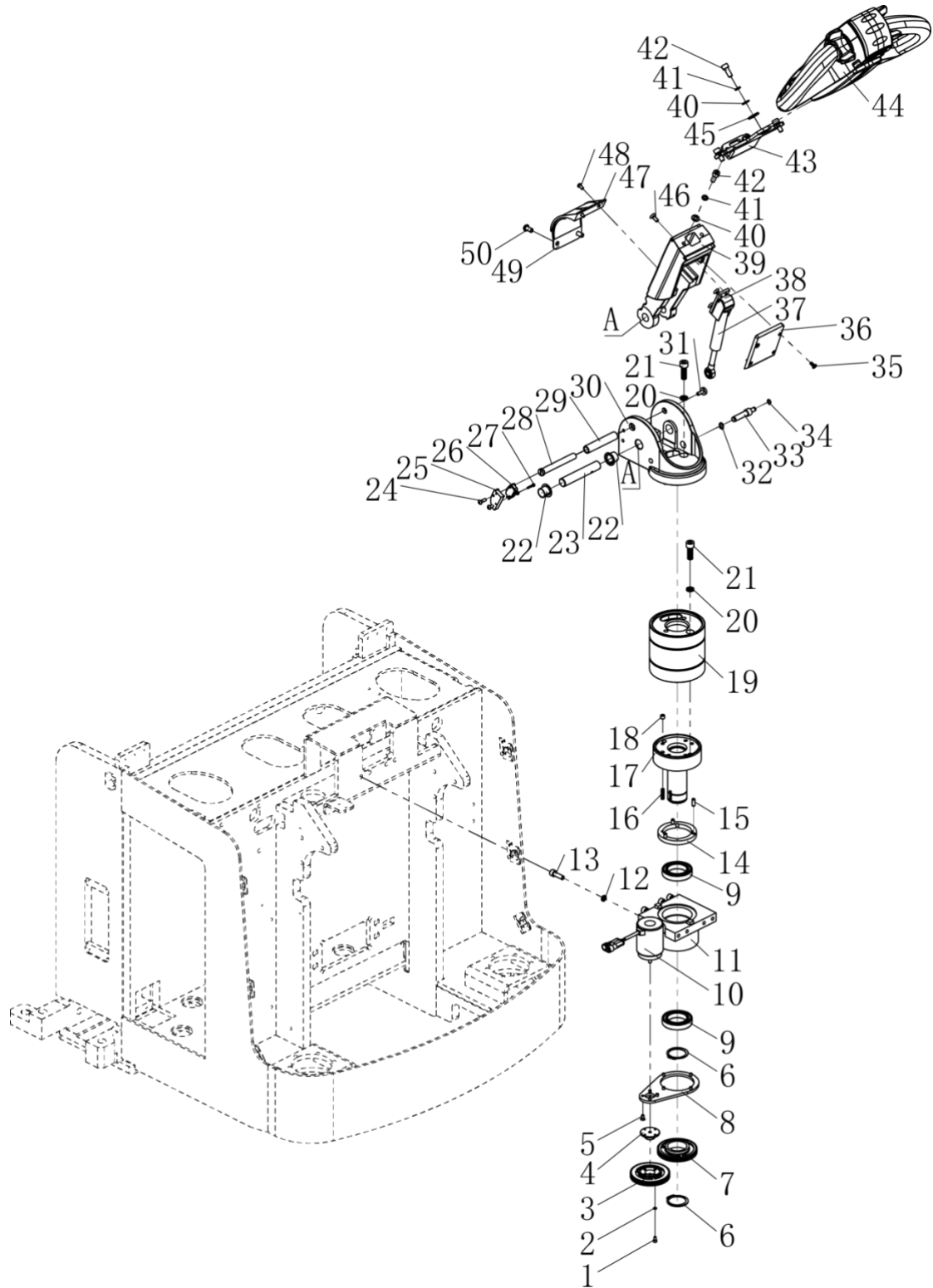


1.1 The frame system

No.	Code	Description	Specification	QTY
1	GB/T 70.1-2000	Hexagon socket head cap screws	M16×30	6
2	GB/T 93-1987	Spring Washer	Φ16	6
3	GB/T 95-2002	Flat Washer	Φ16	6
4	GB/T 70.1-2000	Hexagon socket head cap screws	M10×16	2
5	GB/T 97.1-2002	Flat Washer	Φ10	2
6	CLY20-01.4	Pad		2
7	GB/T 70.1-2000	Hexagon socket head cap screws	M20×130	2
8	SP-25	Universal ball bearing		8
9	GB/T 889.1-2000	Hexagon lock nut	M6	2
10	E10GL-01.3.1	Side door		1
11	GB/T 70.2-2000	Hexagon socket screw with flat round head	M6×25	2
12	SL20GA-01.6	Driving assembly		1
13	SL20GA-01.20	Handle assembly (aluminum)		1
14	CL20GA-08.1(FB55)	Main frame welding		1
15	GB/T 5783-2000	Hexagon bolt full thread	M4×10	6
16	GB/T 859-1987	Spring washer	Φ4	6
17	GB/T 97.1-2002	Flat Washer	Φ4	6
18	SL30.01.02-04	dust cover		2
19	GB/T 812-1988	Round nut	M27×1.5	2
20	GB 858-1988	Lock washer for Round nut	27×1	2
21	GB/T 276-94	Deep groove ball bearing	6206	2
22	SL30.01.02-02	Bearing wheel seat		2
23	GB/T 292-94	Angular contact ball bearing	7206 B	2
24	TC 45×62×10	Framework oil seals		2
25	SL30.01.02-07	Washer		2
26	SL30.01.02.01	Balance wheel holder welded		2
27	GB/T 6184-2000	Hexagon lock nut	M14	2
28	GB/T 93-1987	Spring Washer	Φ14	2
29	SL30.01.02-06	Balance wheel Side pad		4
30	SL30.01.02-08	Balance wheel Side dust cover		4
31	GB/T 276-94	Deep groove ball bearing	6304	4

32	SL30.01.02-03	Balance wheel		2
33	SL30.01.02-05	Balance wheel axle sleeve		2
34	GB/T 95-2002	Flat Washer	Φ14	2
35	GB/T 5782-2000	Hexagon bolt	M14×110	2
36	GB/T 70.1-2000	Hexagon socket head cap screws	M8×25	12
37	GB/T 93-1987	Spring Washer	Φ8	12
38	GB/T 70.3-2000	Hexagon socket countersunk head screw	M6×12	8
39	CL20GA-01.4	Seal plate		2
40	GB/T 5781-2000	Hexagon bolt full thread	M20×65	6
41	GB/T 93-1987	Spring Washer	Φ20	6
42	GB/T 95-2002	Flat Washer	Φ20	6
43	CLY20-01.3	Pressing plate		2
44	CLY20-01.2	Fixed leg welded	One piece of symmetry	1
45	DFL25.1-14D	The joint shaft		4
46	CL10-4H	Front wheel shaft		4
47	GB/T 276-94	Deep groove ball bearing	6204	8
48	CL10-5	Front wheel		4
49	GB/T 879.2-2000	Elastic cylindrical pin	5×35	4

1.1.1 Handle assembly (aluminum)

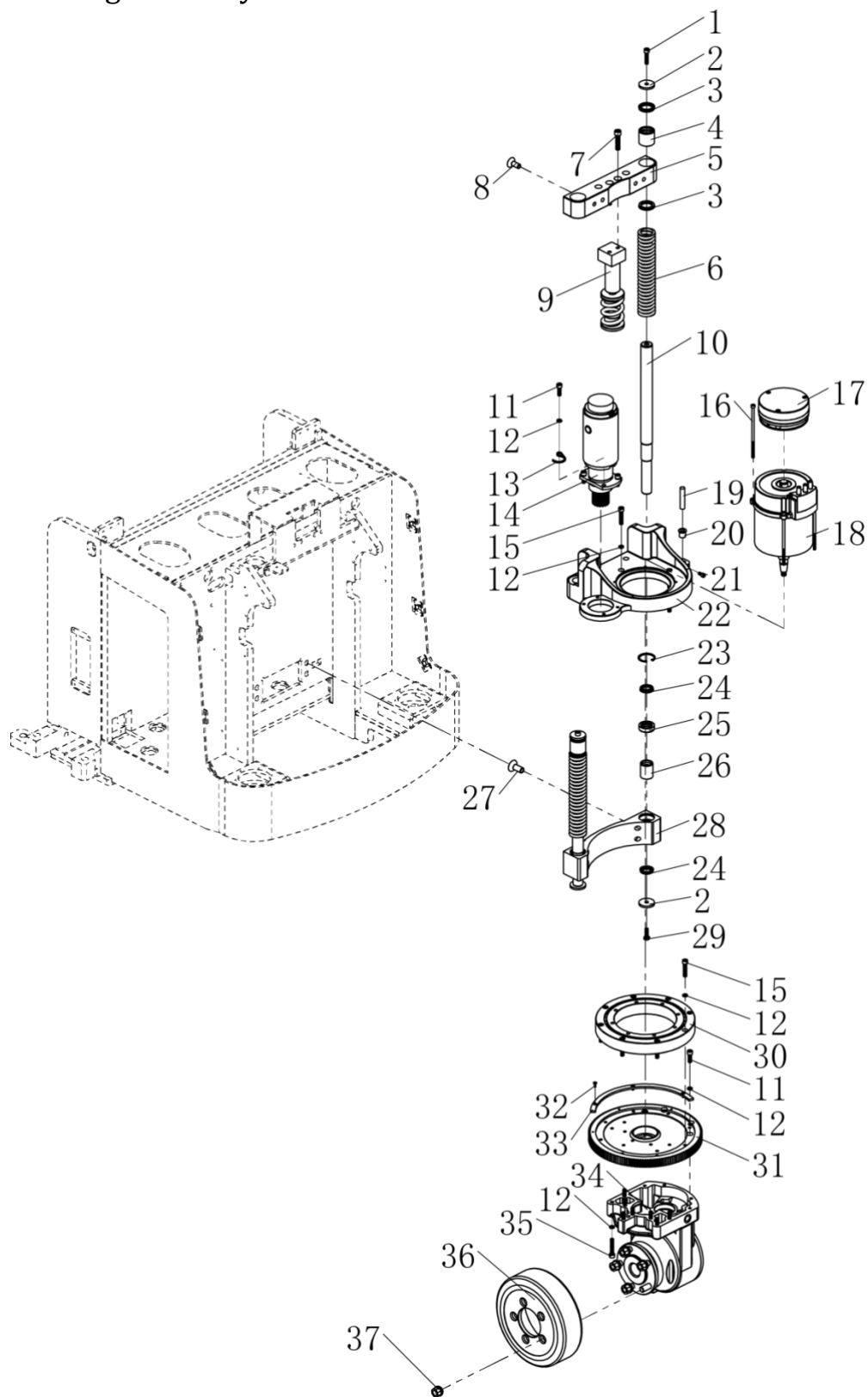


1.1.1 Handle assembly (aluminum)

No.	Code	Description	Specification	QTY
1	GB/70.1-2000	Socket head cap screws	M4×8	4
2	GB/T 93-1987	Spring Washer	Φ4	4
3	SL20GA-01.10.03.02.04	Driven gear		1
4	SL20GA-01.10.03.02.03	Gear mount		1
5	GB/T 819.1-2000	Cross recessed countersunk head screw	M5×10	8
6	GB 894.1-86	Circlip for shaft	40	2
7	SL20GA-01.10.03.01.04	Driving wheel		1
8	SL20GA-01.10.03.02.02	Gear connecting plate		1
9	GB/T 276-94	Deep groove ball bearing	61908-2Z	2
10	02.01.2141	Angle sensor		1
11	SL20GA-01.10.03.02.01	Mounting seat welded		1
12	GB/T 93-1987	Spring Washer	Φ8	4
13	GB/T 70.1-2000	Hexagon socket head cap screws	M8×25	4
14	SL20GA-01.10.03.01.03	Dust ring		1
15	GB/T 119-2000	Cylindrical pin	Φ6×16	3
16	SL20GA-01.10.03.01.02	Spring		6
17	SL20GA-01.10.03.01.01	Joint shaft of handle		1
18	GB/T 77-2000	Hexagon socket set screw with flat end	M8×8	6
19	SL20GA-01.20.3	casing		1
20	GB/T 93-1987	Spring Washer	Φ10	4
21	GB/T 70.1-2000	Hexagon socket head cap screws	M10×30	4
22	Φ28×Φ20×Φ18×16	Composite set with shoulder		2
23	SL20GA-01.20.8	Axis pin		1
24	GB/T 70.2-2000	Hexagon socket screw with flat round head	M5×16	2
25	SL20GA-01.10.01.7	Mounting Plate		1
26	RV-166-1C25	Mirco Switch		1
27	GB/T 70.1-2000	Hexagon socket head cap screws	M3×16	2
28	SL20GA-01.10.01.2	Axis pin		1
29	SL20GA-01.10.01.4	Silicone tube		1
30	SL20GA-01.20.1.1	Handle joint		1
31	SL20GA-01.10.01.3	Screw		1
32	GB 894.1-86	Circlip for shaft	10	1

33	SL20GA-01.20.9	Shaft		1
34	GB/T 894.1	Circlip for shaft	8	1
35	GB/T 70.3-2000	Hexagon socket countersunk head screw	M5×12	4
36	SL20GA-01.20.7	Handle cover		1
37	SL20GA-01.10.02	Gas spring assembly		1
38	SL20GA-01.20.10	Joint welding		1
39	SL20GA-01.20.2	Handlebar		1
40	GB/T 95-2002	Flat Washer	Φ8	5
41	GB/T 93-1987	Spring Washer	Φ8	5
42	GB/T 70.1-2000	Hexagon socket head cap screws	M8×20	5
43	SL20GA-01.20.4	Handle mounting seat		1
44	T606-1	DT Handle		1
45	GB/T 95-2002	Flat Washer	Φ12	1
46	GB/T 70.3-2000	Hexagon socket countersunk head screw	M6×16	4
47	SL20GA-01.20.6	Inner cover		1
48	GB/T 70.2-2000	Hexagon socket screw with flat round head	M5×10	2
49	SL20GA-01.20.5	Outer cover		1
50	GB/T 70.2-2000	Hexagon socket screw with flat round head	M8×16	2

1.1.2 Driving assembly



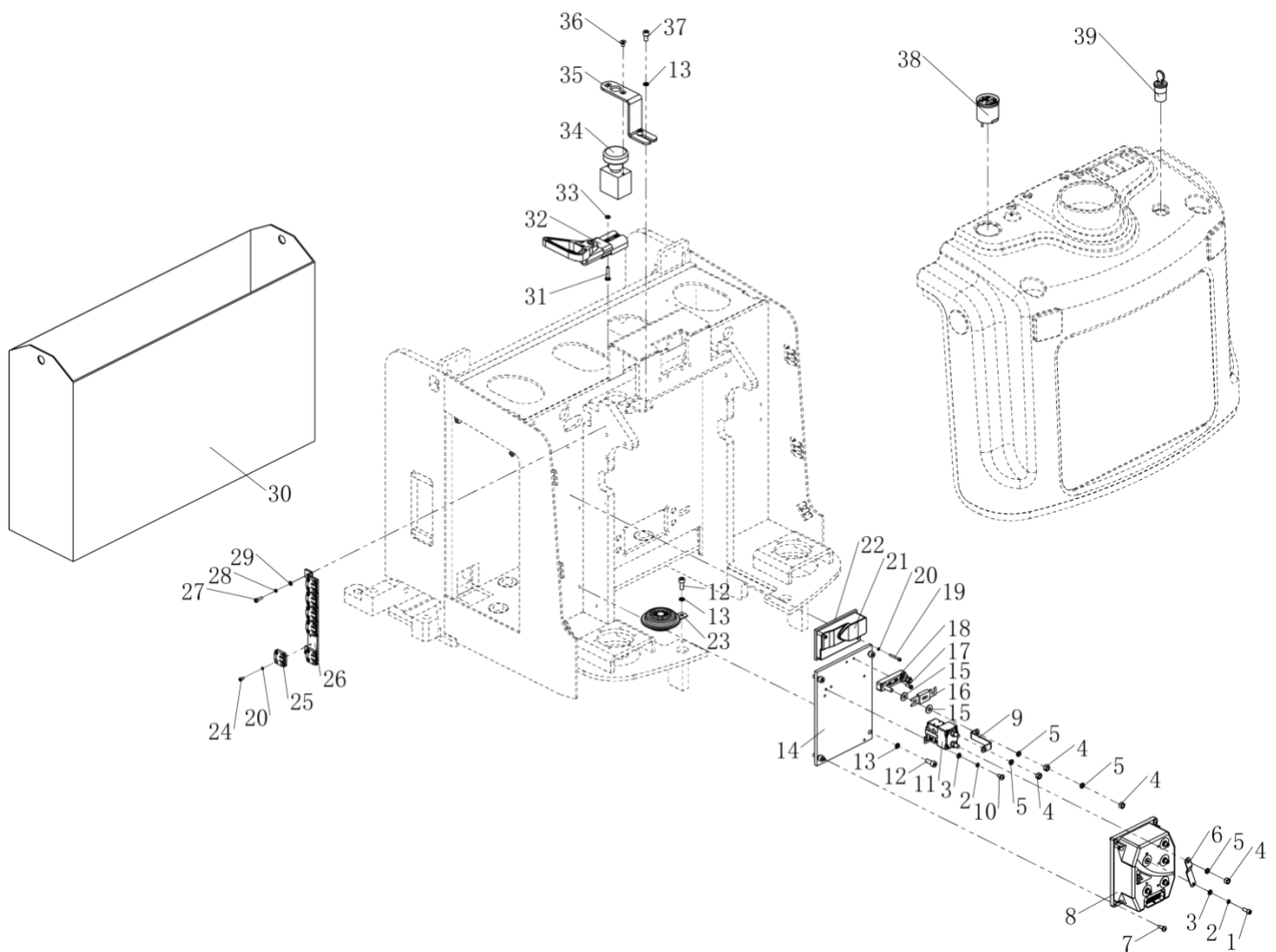
1.1.2 Driving assembly

No.	Code	Description	Specification	QTY
1	GB/T 70.1-2000	Hexagon socket head cap screws	M8×35	2
2	SL20GA-01.6.1.8	Washer		4
3	30×40×4/6	Iron Case Dust-proof ring	30×40×4/6	4
4	SL20GA-01.6.1.5	Guide ring (1)		2
5	SL20GA-01.6.1.2	Upper bracket		1
6	SL20GA-01.6.1.9	Damping spring		2
7	GB/T 70.1-2000	Hexagon socket head cap screws	M10×45	2
8	GB/T 70.3-2000	Hexagon socket countersunk head screw	M12×30	4
9	SL20GA-01.6.2	Booster Cylinder		1
10	SL20GA-01.6.1.4	Slide Bar		2
11	GB/T 70.1-2000	Hexagon socket head cap screws	M8×25	8
12	GB/T 93-1987	Spring Washer	Φ8	28
13	SL20GA-01.6.10	C shaft clip		1
14		Steering Motor	200W	1
15	GB/T 70.1-2000	Hexagon socket head cap screws	M8×40	12
16	GB/T 70.1-2000	Hexagon socket head cap screws	M6×150	4
17	SL20GA-01.6.3	Electromagnetic brake magnetic sensor assembly.		1
18	SL20GA-01.6.7	AC Motor		1
19	PM12-04N	Proximity switch		1
20	SL20GA-01.6.6	Mounting sleeve		1
21	GB/T 70.1-2000	Hexagon socket head cap screws	M6×12	1
22	SL20GA-01.6.1.1	Drive base		1
23	GB 893.1-86	Circlip for hole	40	2
24	DHS25×33×4.5/6	Rubber dust proof ring	25×33×4.5/6	4
25	SL20GA-01.6.1.7	Shaft sleeve		2
26	SL20GA-01.6.1.6	Guide ring (2)		2
27	GB/T 70.3-2000	Hexagon socket countersunk head screw	M14×35	4
28	SL20GA-01.6.1.3B	Lower bracket B		1
29	GB/T 5781-2000	Hexagon bolt	M8×25	2
30	SL20GA-01.6.4	Large slewing bearing		1
31	ZD-ZV21-ZXCL-001	Steer gear box cover		1
32	GB/T 70.3-2000	Hexagon socket countersunk head screw	M4×12	3
33	SL20GA-01.6.9	Strip sensor bar		1
34	ZD-ZV21-500-001	Reduction gearbox		1

35	GB/T 70.1-2000	Hexagon socket head cap screws	M8×45	8
36	ZD-ZV21-BJL-001	Driving wheel		1
37		Driving wheel nut		5

2.Electrical assembly

2.1Electrical assembly



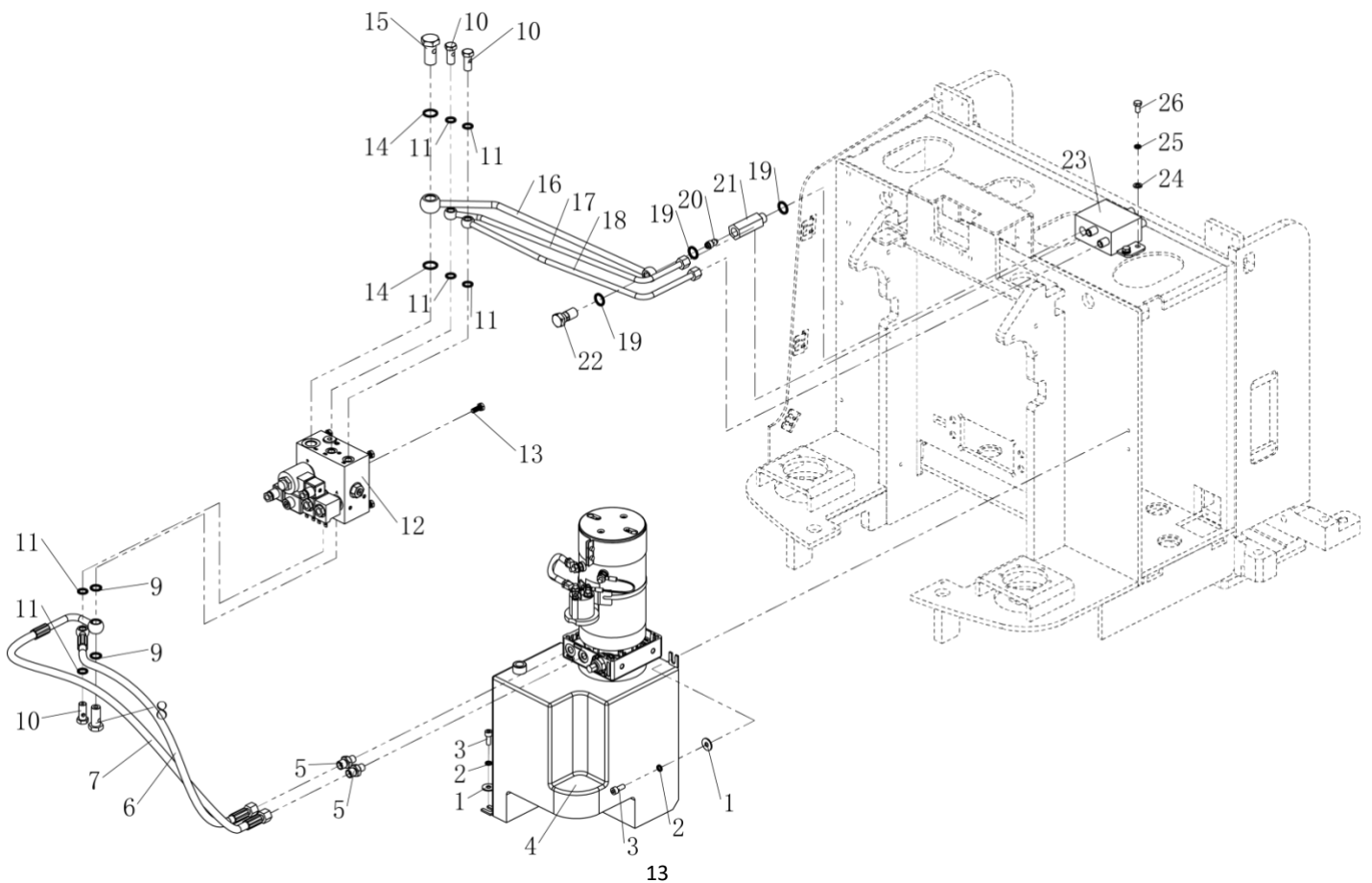
2.1 Electrical assembly

No.	Code	Description	Specification	QTY
1	GB/T 70.1-2000	Hexagon socket head cap screws	M6×16	5
2	GB/T 93-1987	Spring Washer	Φ6	7
3	GB/T 95-2002	Flat Washer	Φ6	7
4	GB/T 6170-2000	Hexagon nut	M8	6
5	GB/T 93-1987	Spring Washer	Φ8	6
6	DK1232-01.2	Connection piece (3)		1
7	GB/T 818-2000	Cross recessed pan head screw	M6×16	4
8	1232	1232 AC Controller		1
9	DK1230-01.2	Connection piece (1)		1
10	GB/T 818-2000	Cross recessed pan head screw	M6×12	2
11	SW80	Relay		1
12	GB/T 70.1-2000	Hexagon socket head cap screws	M8×20	5
13	GB/T 93-1987	Spring Washer	Φ8	7
14	DK1232-02.1	Controller mounting plate		1
15		Copper Pad		4
16	200A	Fuse		1
17	GB/T 818-2000	Cross recessed pan head screw	M5×16	2
18	SYF	SYF Fuse base		1
19	GB/T 70.1-2000	Hexagon socket head cap screws	M4×30	2
20	GB/T 859-1987	Spring washer	Φ4	14
21	1212P-2502	Steering Controller		1
22	DK1220.01-1	Controller Mounting plate		1
23		Horn		1
24	GB/T 70.1-2000	Hexagon socket head cap screws	M4×8	12
25	SL30.01.04-07	Wire seat		6
26	SL20GA-01.14	Terminal Block		1
27	GB/T 70.1-2000	Hexagon socket head cap screws	M5×16	2
28	GB/T 93-1987	Spring Washer	Φ5	2
29	GB/T 97.1-2002	Flat Washer	φ5	2
30	CLL2032.01.03	Battery	24V/240AH	1

		Li-ion battery	24V/150AH	
31	GB/T 818-2000	Cross recessed pan head screw	M6×30	2
32	175A-600V	Large power connector		1
33	GB/T 6174-2000	Hexagonal thin nut	M6	4
34	ZDK31-250	Emergency stop switch		1
35	E10GL-01.15	Power off switch mounting bracket		1
36	GB/T 70.3-2000	Hexagon socket countersunk head screw	M6×12	2
37	GB/T 70.1-2000	Hexagon socket head cap screws	M8×16	2
38		Electricity meterDC24V		1
39		Key XF125		1

3.Hydraulic system

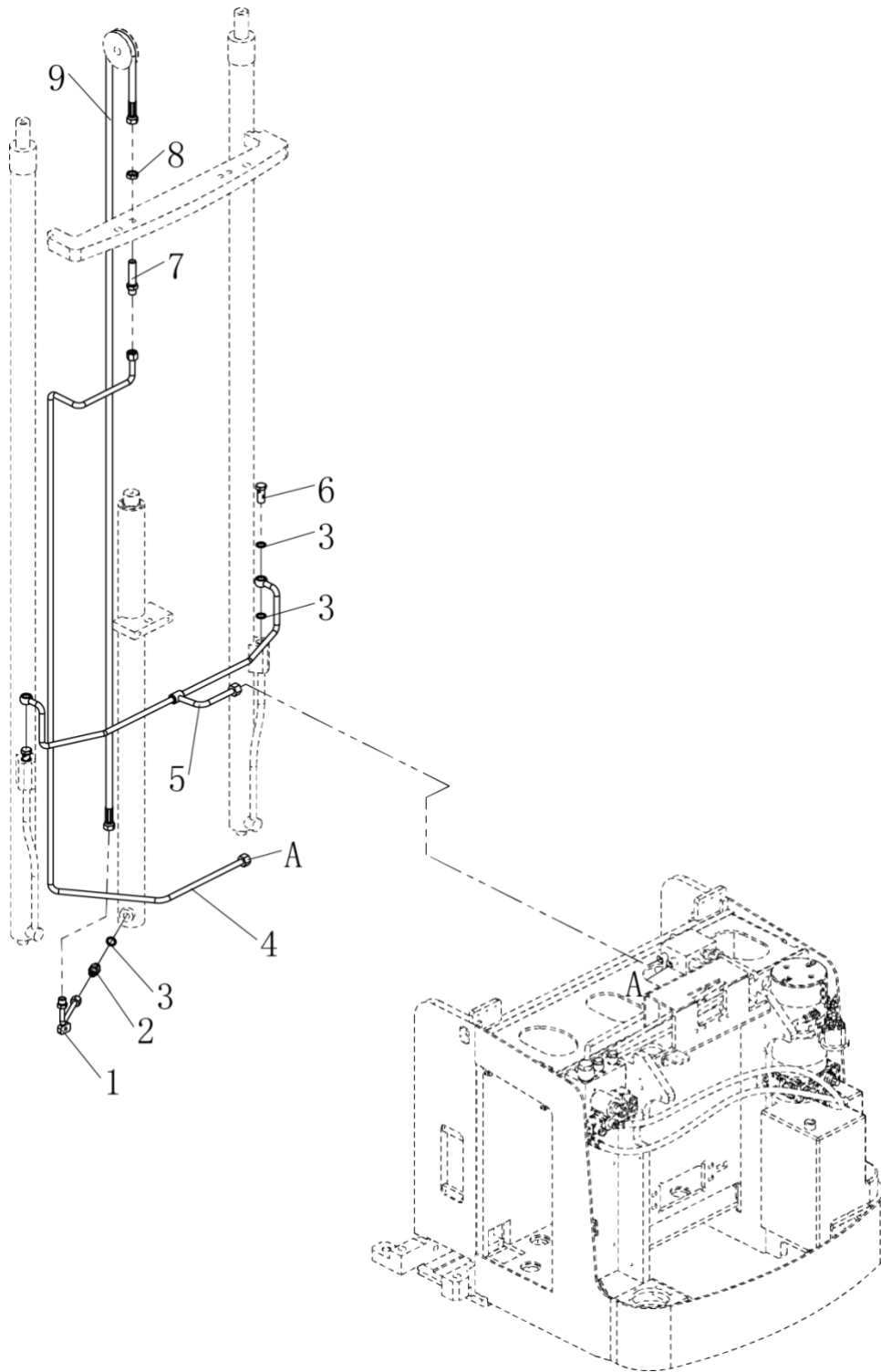
3.1Bodywrok hydraulic



3.1 Bodywork hydraulic

No.	Code	Description	Specification	QTY
1	GB/T 96.2-2002	Large washer	Φ8	2
2	GB/T 93-1987	Spring Washer	Φ8	2
3	GB/T 70.1-2000	Hexagon socket head cap screws	M8×20	2
4	CL20GA-01.2	Pump station assembly		1
5	E10GL-08.2.8FB	Straight joint		2
6	CL20GA-12.10 (FB55)	Rubber hose		1
7	CL20GA-12.11 (FB55)	Rubber hose		1
8	CL20GA-12.12 (FB55)	Hinged bolt		1
9	GB982-77	Φ16Combination seal		2
10	Q1545.08-5	Hollow bolt		3
11	GB892-77	Φ14Combination seal		6
12	800501377	Stack assembly		1
13	GB/T 5781-2000	Hexagon bolt	M8×20	4
14	GB892-77	Φ22Combination seal		2
15	CL20GA-12.13 (FB55)	Hinged bolt		1
16	CL20GA-12.7 (FB55)	Lifting steel pipe		1
17	CL20GA-12.8 (FB55)	Side shifter steel pipe		1
18	CL20GA-12.9 (FB55)	Side shifter steel pipe		1
19	GB982-77	Φ18Combination seal		3
20		Descending valve core		1
21	Q15GC-02.5.10	Descending valve housing		1
22	Q15GC-02.5.12	Hollow bolt		1
23	CL20GA-12.28 (FB55)	Tubing seat		1
24	GB/T 95-2002	Flat Washer	Φ8	2
25	GB/T 93-1987	Spring Washer	Φ8	2
26	GB/T 5783-2000	Hexagon bolt full thread	M8×16	2

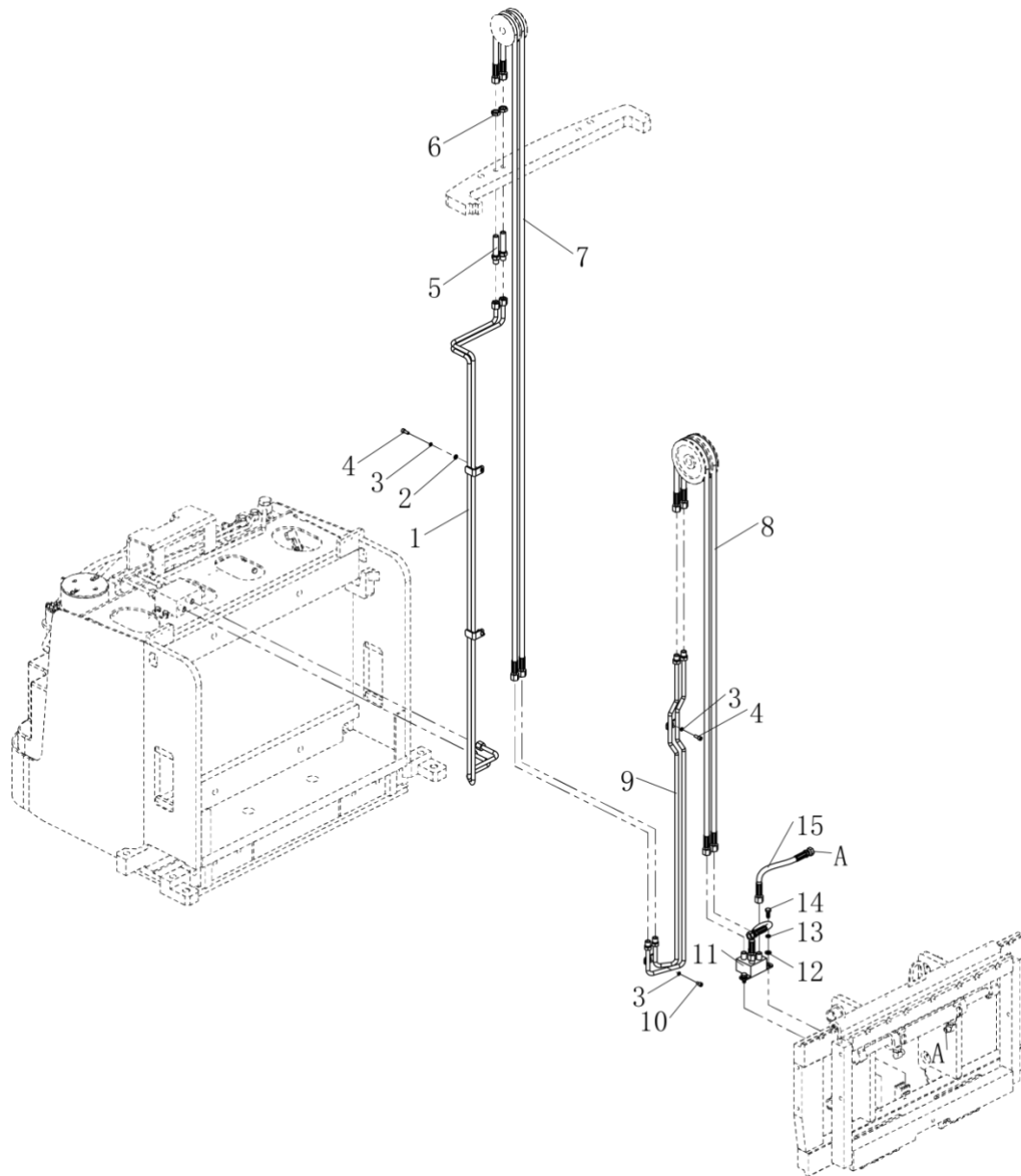
3.2 Lifting Hydraulic system



3.2 Lifting Hydraulic system

No.	Code	Description	Specification	QTY
1	CLGF20-04.7	Steel pipe1		1
2	CG1646.05.1-4	Straight joint		1
3	GB982-77	Φ16Combination seal		5
4	CL2055GA-04.1.3	Steel pipe		1
5	CL20GA-12.2 (FB55)	Lifting Steel pipe		1
6	CL20GA-12.3 (FB55)	Hinged bolt		2
7	Q1545.08-40	Connector		1
8	GB/T 6173-2000	Thin hexagon nut with fine teeth	M16×1.5	1
9	CL20GA-12.15 (FB55)	High pressure Rubber hose		1

3.3 Side shifter Hydraulic system

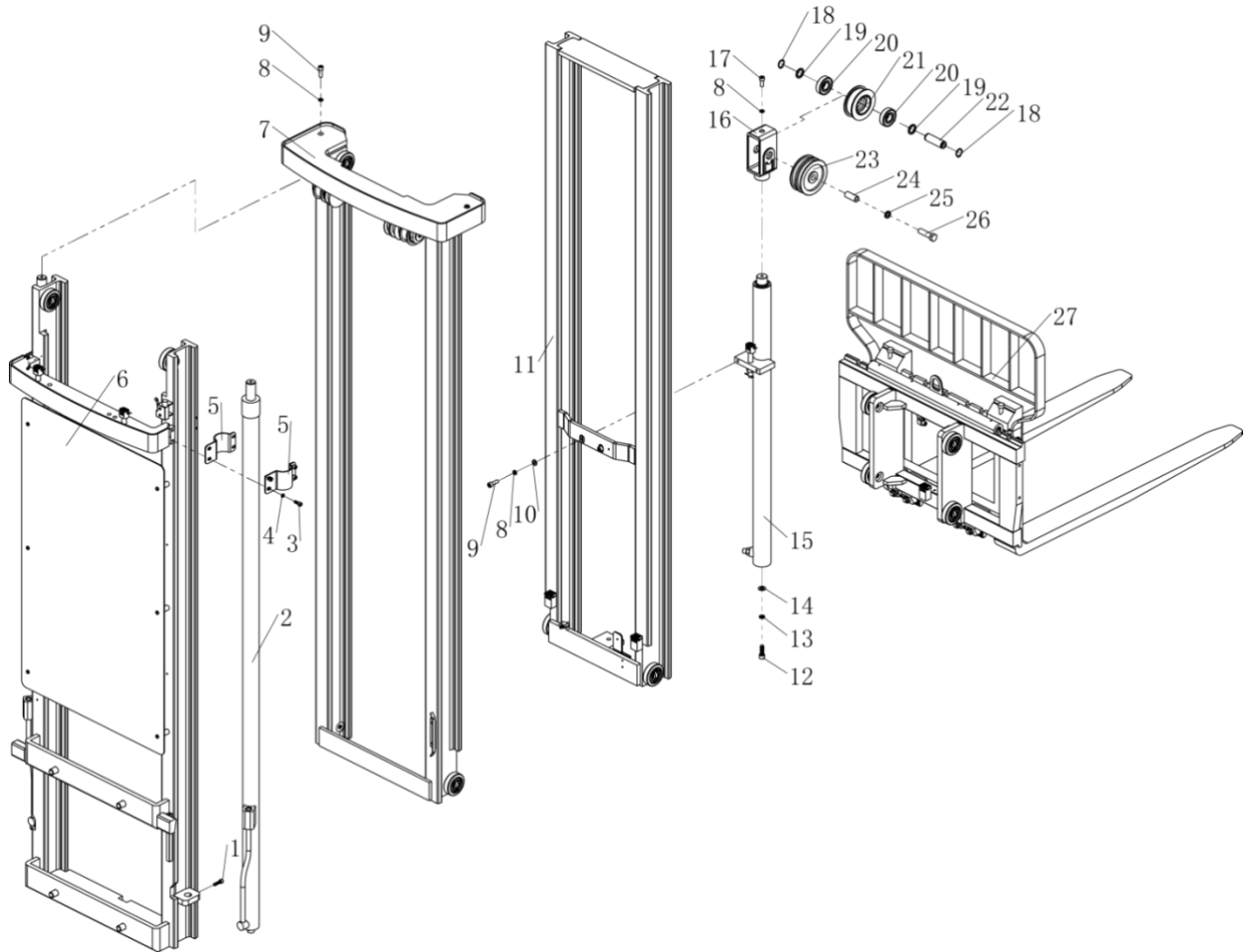


3.3 Side shifter Hydraulic system

No.	Code	Description	Specification	QTY
1	CL20GA-12.14 (FB55)	Steel pipe Welding		1
2	GB/T 95-2002	Flat Washer	Φ6	2
3	GB/T 93-1987	Spring Washer	Φ6	4
4	GB/T 70.1-2000	Hexagon socket head cap screws	M6×16	3
5	Q15GB-02.5.7	Connector		2
6	GB/T 6173-2000	Thin hexagon nut with fine teeth	M14×1.5	2
7	CL20GA-12.6 (FB55)	Rubber hose		2
8	CL20GA-12.5 (FB55)	Rubber hose		2
9	CL20GA-12.1 (FB55)	Steel pipe Welding		1
10	GB/T 70.1-2000	Hexagon socket head cap screws	M6×10	1
11	CL20GA-12.4 (FB55)	Tubing Seat		1
12	GB/T 95-2002	Flat Washer	Φ8	2
13	GB/T 93-1987	Spring Washer	Φ8	2
14	GB/T 5781-2000	Hexagon bolt	M8×20	2
15	E10GL-10.7FB	Side shifter Rubber hose		2

4. Door frame

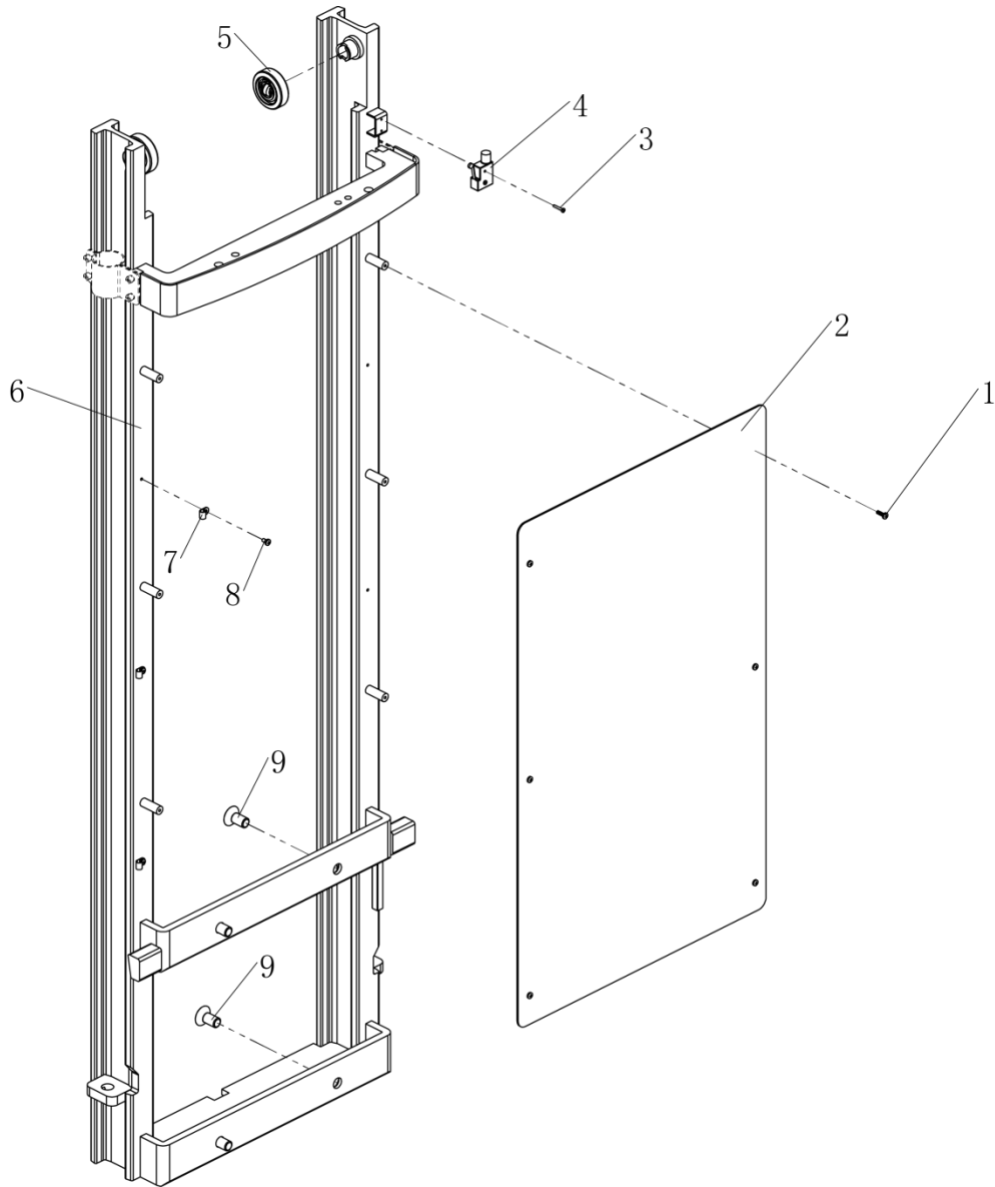
4.1 Triple mast assembly with full free lifting



4.1 Triple mast assembly with full free lifting

No.	Code	Description	Specification	QTY
1	GB/T 70.1-2000	Hexagon socket head cap screws	M8×30	2
2	CL20GA-12.29 (FB55)	Lifting cylinder assembly	One piece of symmetry	1
3	GB/T 70.1-2000	Hexagon socket head cap screws	M8×20	8
4	GB/T 93-1987	Spring Washer	Φ8	8
5	CL20GA-04.1.2	Cylinder hoop		4
6	CL20GA-04.1(FB55)	Outer frame welding		1
7	CL20GA-04.2(FB55)	Middle frame welding		1
8	GB/T 93-1987	Spring Washer	Φ10	5
9	GB/T 70.1-2000	Hexagon socket head cap screws	M10×30	4
10	GB/T 95-2002	Flat Washer	Φ10	2
11	CL20GA-04.3(FB55)	Inner frame welding		1
12	GB/T 70.1-2000	Hexagon socket head cap screws	M12×35	1
13	GB/T 93-1987	Spring Washer	Φ12	1
14	GB/T 97.1-2002	Flat Washer	Φ12	1
15	CL2055GA-04.6	Front lifting cylinder		1
16	CL1555QD.02-8	Chain wheel Bracket		1
17	GB/T 70.1-2000	Hexagon socket head cap screws	M10×25	1
18	GB 894.1-86	Circlip for shaft	25	2
19	CL1555QD.02-9	Washer		2
20	GB/T 276-94	Deep groove ball bearing	6305-2Z	2
21	CG1646.03.3-5	Chain wheel A		1
22	Q1545-12.7	Chain wheel axle		1
23	Q1545-11.10	Tubing pulley		1
24	Q1545-11.8	Pulley spacer		1
25	GB/T 93-1987	Spring Washer	Φ16	3
26	GB/T 5783-2000	Hexagon bolt full thread	M16×60	1
27	CLGF20-04.4fb	Fork holder Assembly		1

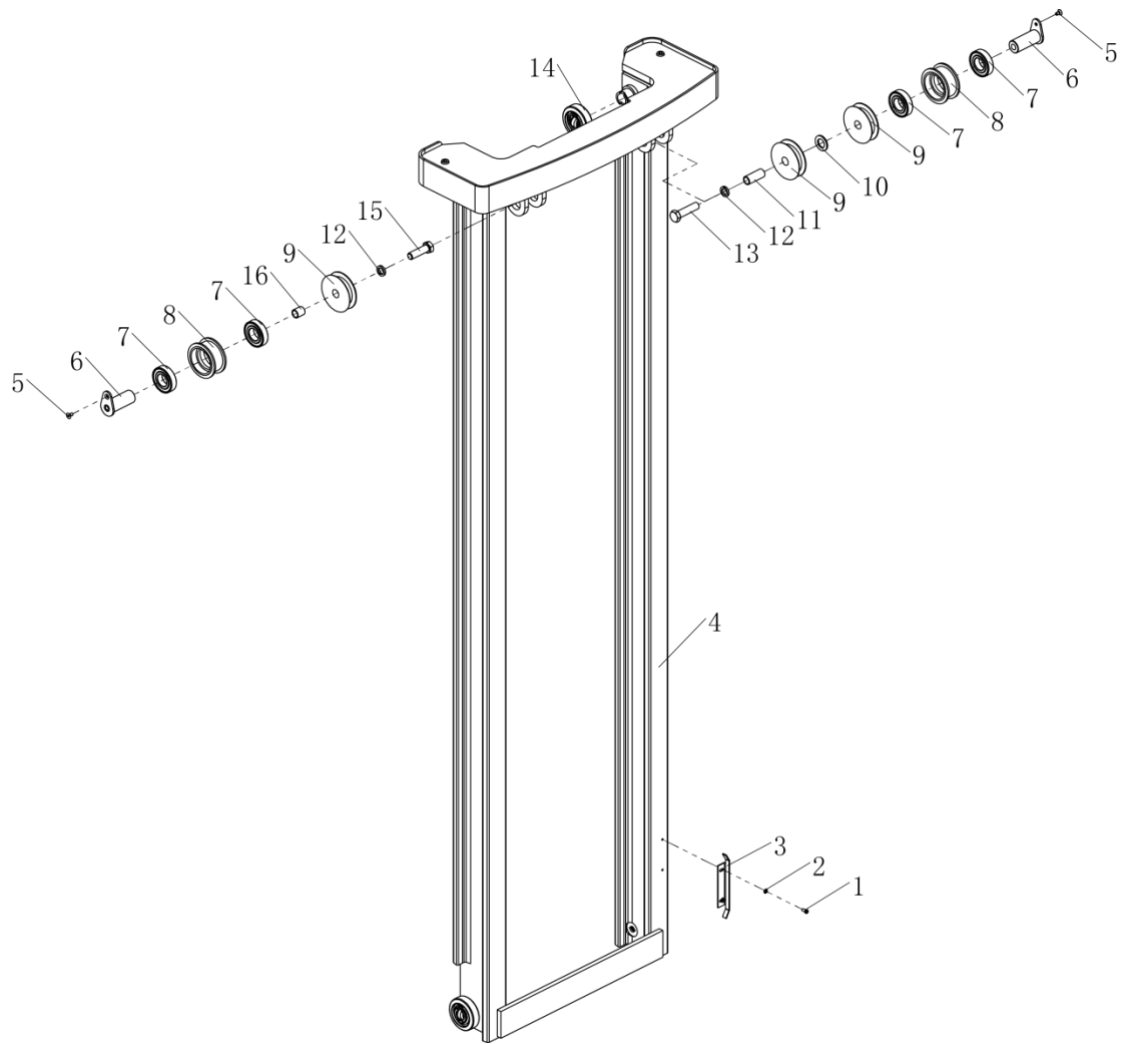
4.1.1 Outer frame welding



4.1.1 Outer frame welding

No.	Code	Description	Specification	QTY
1	GB/T 818-2000	Cross recessed pan head screw	M6×20	6
2	CL20GA-04.1.3(FB55)	Protection plate		1
3	GB/T 818-2000	Cross recessed pan head screw	M4×25	2
4	RZ-15GW2S-B3	Mirco Switch		1
5	CRA78.3-12S	Combination Roller		2
6	CL20GA-04.1.1(FB55)	Outer Frame welding		1
7		Tubing clamp		3
8	GB/T 818-2000	Cross recessed pan head screw	M6×12	3
9	GB/T 70.3-2000	Hexagon socket countersunk head screw	M20×40	4

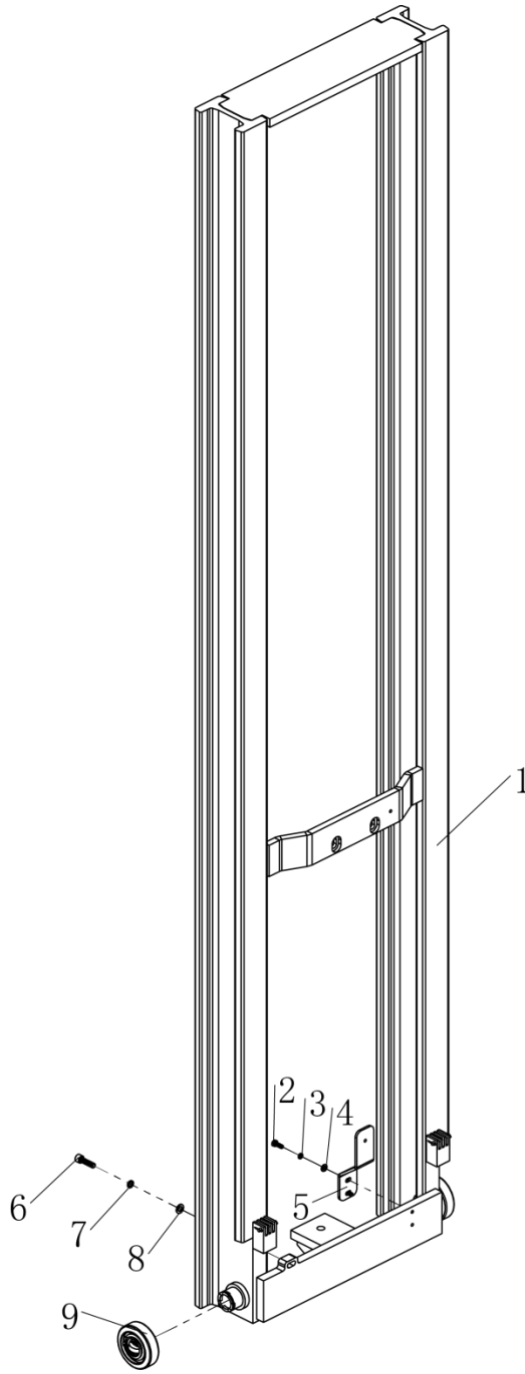
4.1.2 Middle frame welding



4.1.2 Middle frame welding

No.	Code	Description	Specification	QTY
1	GB/T 818-2000	Cross recessed pan head screw	M5×12	2
2	GB/T 95-2002	Flat Washer	Φ5	2
3	CLGF20-04.2.2	Limit plate		1
4	CL20GA-04.2.1(FB55)	Middle Frame Welding		1
5	GB/T 70.3-2000	Hexagon socket countersunk head screw	M6×12	2
6	E10GS-07.2.2	Chain wheel axle welding		2
7	GB/T 276-94	Deep groove ball bearing	6206-2Z	4
8	CG1646.03.2-7	Chain wheel B		2
9	CL1032C.02-10	Pulley		3
10	GB/T 95-2002	Flat Washer	Φ20	1
11	CL20GA-12.18(FB55)	Pulley spacer		1
12	GB/T 93-1987	Spring Washer	Φ16	2
13	GB/T 5783-2000	Hexagon bolt full thread	M16×65	1
14	CRA78.3-12S	Combination Roller		4
15	GB/T 5781-2000	Hexagon bolt	M16×55	1
16	E10GS-07.2.3	Pulley sleeve		1

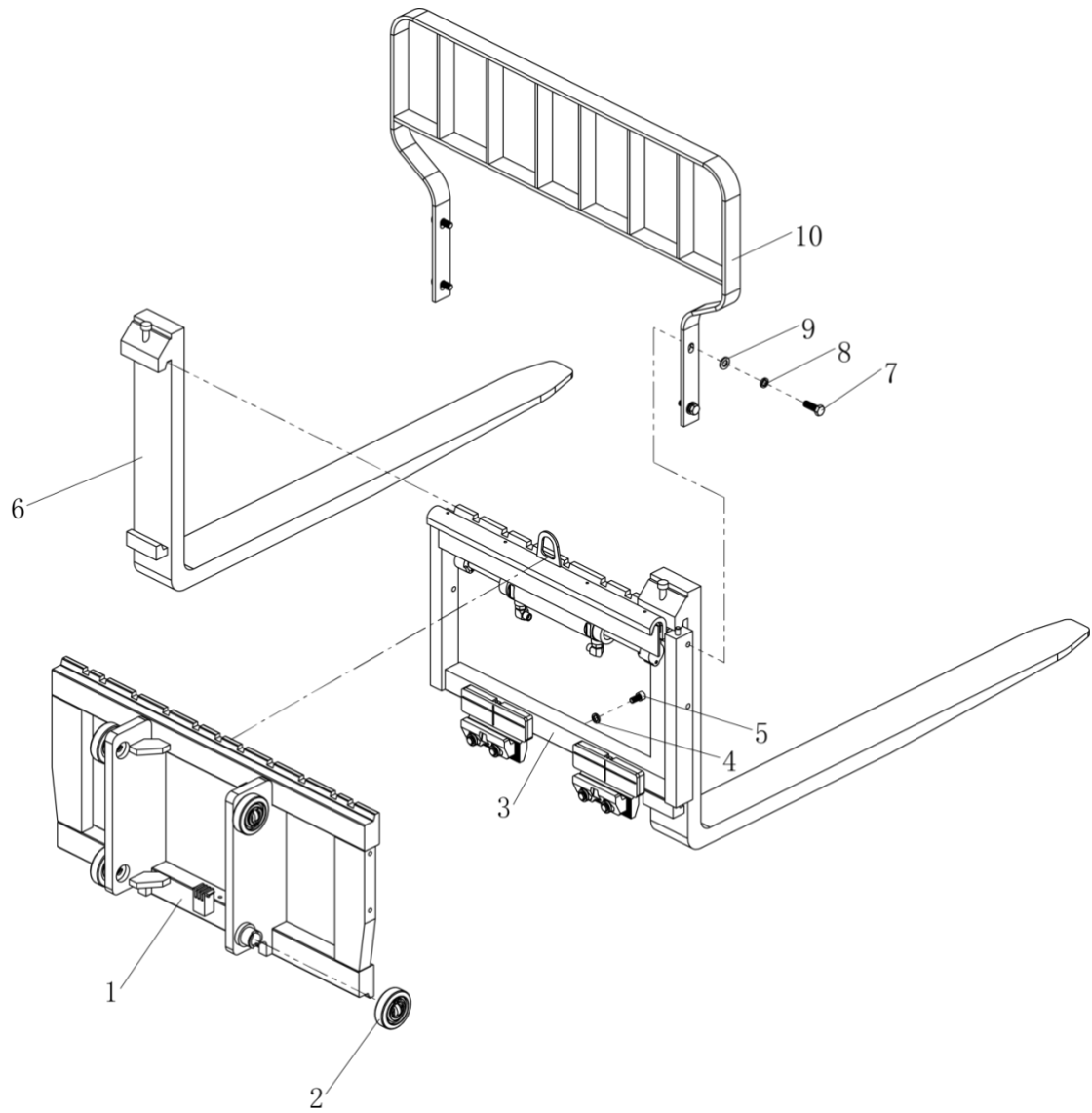
4.1.3 Inner frame welding



4.1.3 Inner frame welding

No.	Code	Description	Specification	QTY
1	CL20GA-04.3.1(FB55)	Inner Frame Welding		1
2	GB/T 5781-2000	Hexagon bolt	M6×16	2
3	GB/T 93-1987	Spring Washer	φ6	2
4	GB/T 95-2002	Flat Washer	φ6	2
5	CL20GA-12.31 (FB55)	Mounting plate 1		1
6	GB/T 70.1-2000	Hexagon socket head cap screws	M8×30	1
7	GB/T 93-1987	Spring Washer	φ8	1
8	GB/T 95-2002	Flat Washer	φ8	1
9	CRA78.3-12S	Combination Roller		2

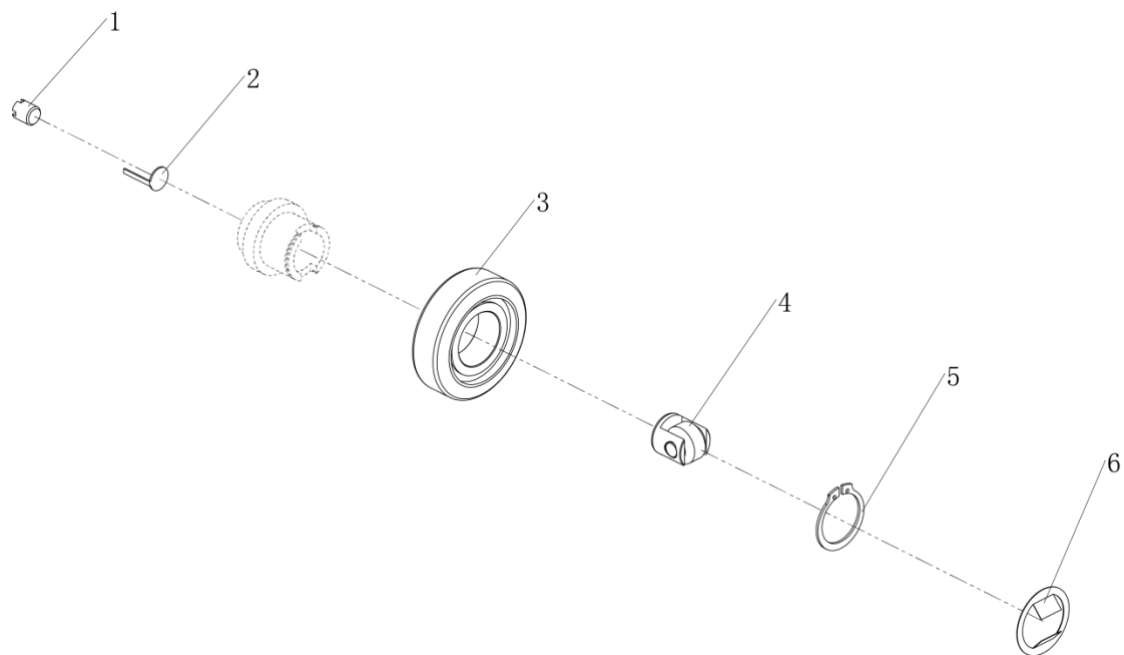
4.1.4 Fork holder Assembly



4.1.4 Fork holder Assembly

No.	Code	Description	Specification	QTY
1	CLGF2045	Fork holder assembly		1
2	CRA78.3-12S	Combination Roller		4
3	GC20NL	Sider shifter	GC20NL	1
4	GB/T 93-1987	Spring Washer	φ12	1
5	GB/T 70.1-2000	Hexagon socket head cap screws	M10×20	1
6	E10GS-03.3.3	Fork		2
7	GB/T 5781-2000	Hexagon bolt	M12×35	4
8	GB/T 93-1987	Spring Washer	φ12	4
9	GB/T 97.1-2002	Flat Washer	φ12	4
10	Q1533FB-01.3.3	Parapet wall welded		1

4.1.5 Combination roller assembly



4.1.5 Combination roller assembly

No.	Code	Description	Specification	QTY
1	CRA78.3	Adjustment screw		1
2		Anti-loose piece		1
3	CRA78.3	Roller		1
4	CRA78.3	Small roller bracket Assembly		1
5	GB 894.1-86	Circlip for shaft	φ35	1
6	CRA78.3	Dust proof sheet		1

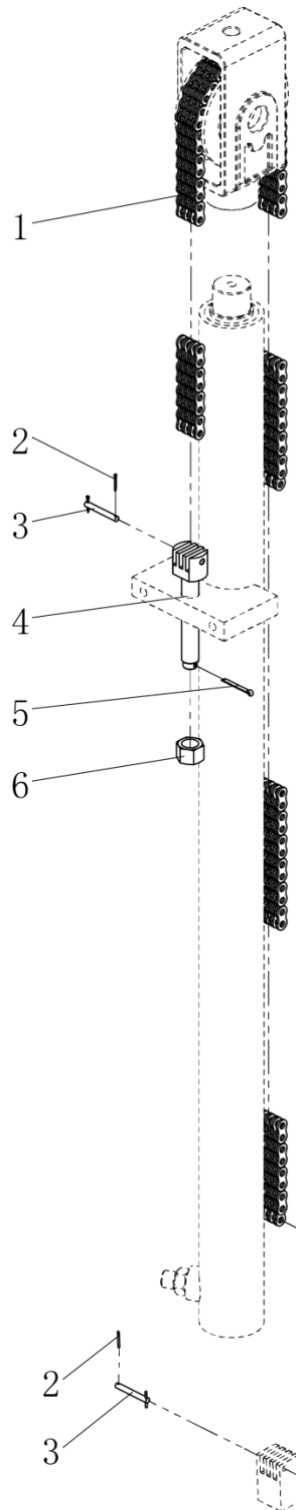
4.2 Chain assembly



4.2Chain assembly

No.	Code	Description	Specification	QTY
1	LH0866	Leaf chain		2
2	GB/T 91-2000	Split pin	$\varphi 1.6 \times 12$	8
3	GB 880-86	Pin with hole	$\varphi 5 \times 40$	4
4	CG1646.02-4	Chain bolt		2
5	GB/T 91-2000	Split pin	$\varphi 3 \times 30$	2
6	GB/T 41-2000	Hexagon nut	M16	2

4.3 Chain assembly

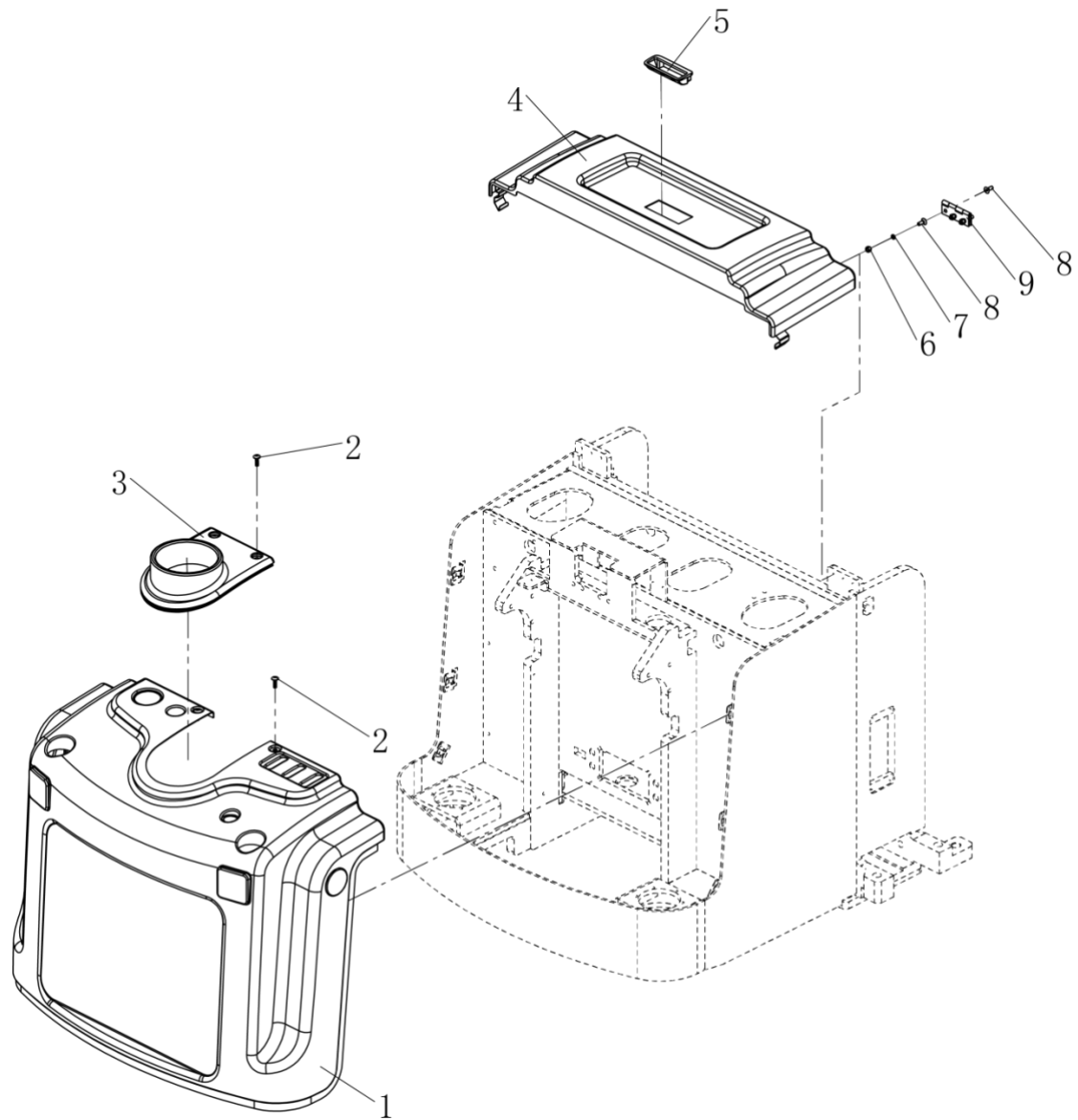


4.3Chain assembly

No.	Code	Description	Specification	QTY
1	LH0866	Leaf chain		1
2	GB/T 91-2000	Split pin	$\varphi 1.6 \times 12$	4
3	GB 880-86	Pin with hole	$\varphi 5 \times 40$	2
4	CG1646.02-4	Chain bolt		1
5	GB/T 91-2000	Split pin	$\varphi 3 \times 30$	1
6	GB/T 41-2000	Hexagon nut	M16	1

5.Cover assembly

5.1Cover assembly



5.1 Cover assembly

No.	Code	Description	Specification	QTY
1	E10GL-05.1	Cover		1
2	GB 973-1976	Large flat head cross screw	M6×16	4
3	E10GL-05.7	Rubber sleeve		1
4	E10GL-05.3.1	Battery cover		1
5		Embedded handle		1
6	GB/T 41-2000	Hexagon nut	M6	6
7	GB/T 93-1987	Spring Washer	Φ6	6
8	GB/T 70.3-2000	Hexagon socket countersunk head screw	M6×16	12
9		Battery box cover hinge (small)		2

Note: the manufacturer reserves the right of interpretation.

If have change not notice additionally! !