

EKKO[®]

MATERIAL HANDLING EQUIPMENT

MOVING **AHEAD**

PART LIST

Stand-up Electric forklift

EK18RF & EK18RFL

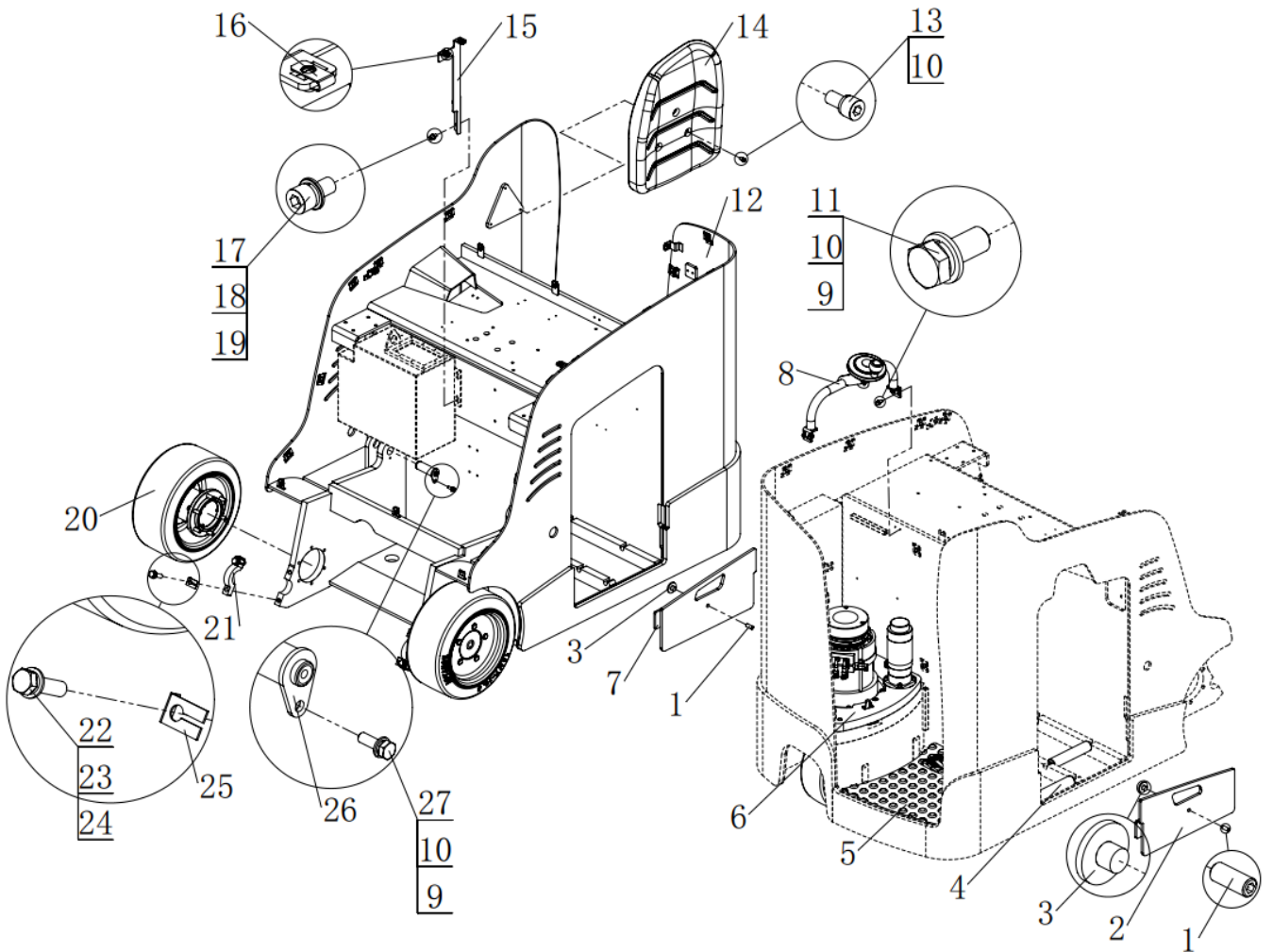


Content

1.Bodywork system.....	1
1.1Frame assembly	1
1.1.1Driving system	3
1.1.2Steering wheel assembly	6
1.1.3Foot Padel assebmly	8
1.1.4Front wheel assembly	10
1.2Overhead guard assembly.....	12
2.Hydraulic system.....	14
2.1Main frame Hydraulic system	14
2.1.1Fuel tank assembly	17
2.2Door frame Hydraulic system.....	19
3.Electrical System	21
3.1Electrical Assembly	21
4.Door frame system	25
4.1Door frame assembly	25
4.1.1Outer mast welding.....	27
4.1.2Middle mast welding	29
4.1.3Inner mast welding	31
4.1.4Fork Carriage assembly.....	33
4.1.5Sprocket frame assembly.....	35
4.2Chain assembly.....	37
5.Cover system	39
5.1Cover assembly.....	39

1.Bodywork system

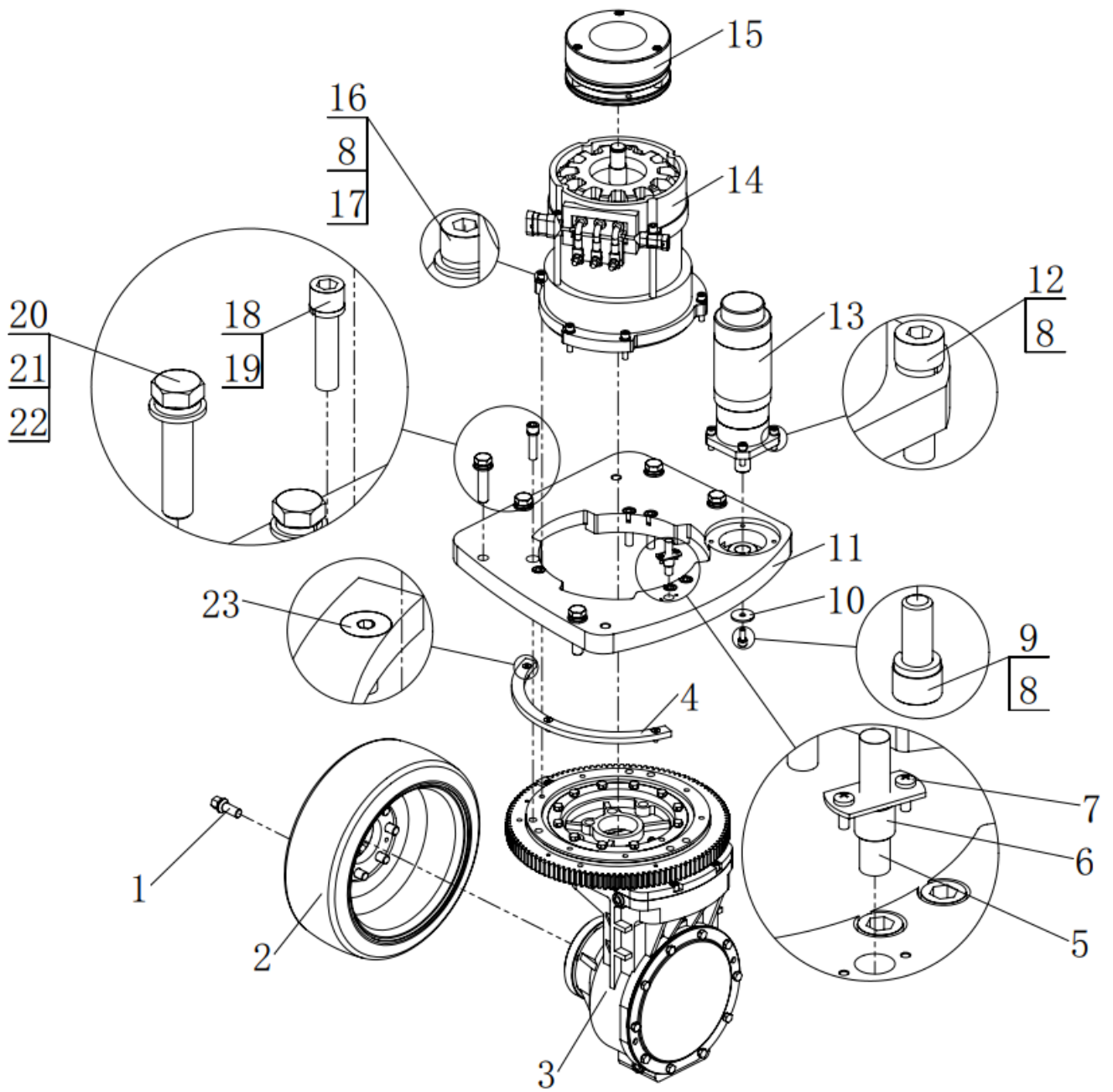
1.1Frame assembly



1.1 Frame assembly

No.	Code	Description	Specification	QTY	Remark
1	03.0273	Hexagon socket set screw with flat end	M12×25	2	GB/T 77-2000
2	EGS18L-01.2.1	Battery baffle welded Right		1	
3	SPN10.3-3	Side pressure pad		2	
4	EGS18L-01.13	Roller		8	
5	EGS18L-01.4	Foot Pedal assembly		1	
6	EGS18L-01.6	Driving assembly		1	
7	EGS18L-01.3.1	Battery baffle welded Left		1	
8	EGS18L-01.8	Steering wheel operating components		1	
9	03.0050	Flat washer	Φ8	12	GB/T 95-2002
10	03.0012	Spring Washer	Φ8	20	GB/T 93-1987
11	03.0357	Hexagon bolts full thread	M8×20	4	GB/T 5783-2000
12	EGS18L-01.1	Main frame assembly		1	
13	03.0153	Hexagon socket head cap screws	M8×16	3	GB/T 70.1-2000
14	EGS18L-01.10	Backrest		1	
15	EGS18L-01.15	Cover mounting bracket		1	
16	03.0587	Spring clip nut	M6	9	
17	03.0163	Hexagon socket head cap screws	M10×20	4	GB/T 70.1-2000
18	03.0014	Spring Washer	Φ10	4	GB/T 93-1987
19	03.0043	Flat washer	Φ10	4	GB/T 97.2-1985
20	EGS18L-01.5	Front wheel assembly		2	
21	EGS18L-01.12	Door frame hoop		2	
22	03.0780	Hexagon bolts	M14×50	4	GB/T 5783-2000
23	03.00135	Spring Washer	Φ14	4	GB/T 93-1987
24	03.0045	Flat washer	Φ14	4	GB/T 95-2002
25	E25A-01.29	Bolt clamp		4	
26	Q15GB-01.12	Tilt oil cylinder pin welding		2	
27	03.0375	Hexagon bolts full thread	M8×25	2	GB/T 5783-2000

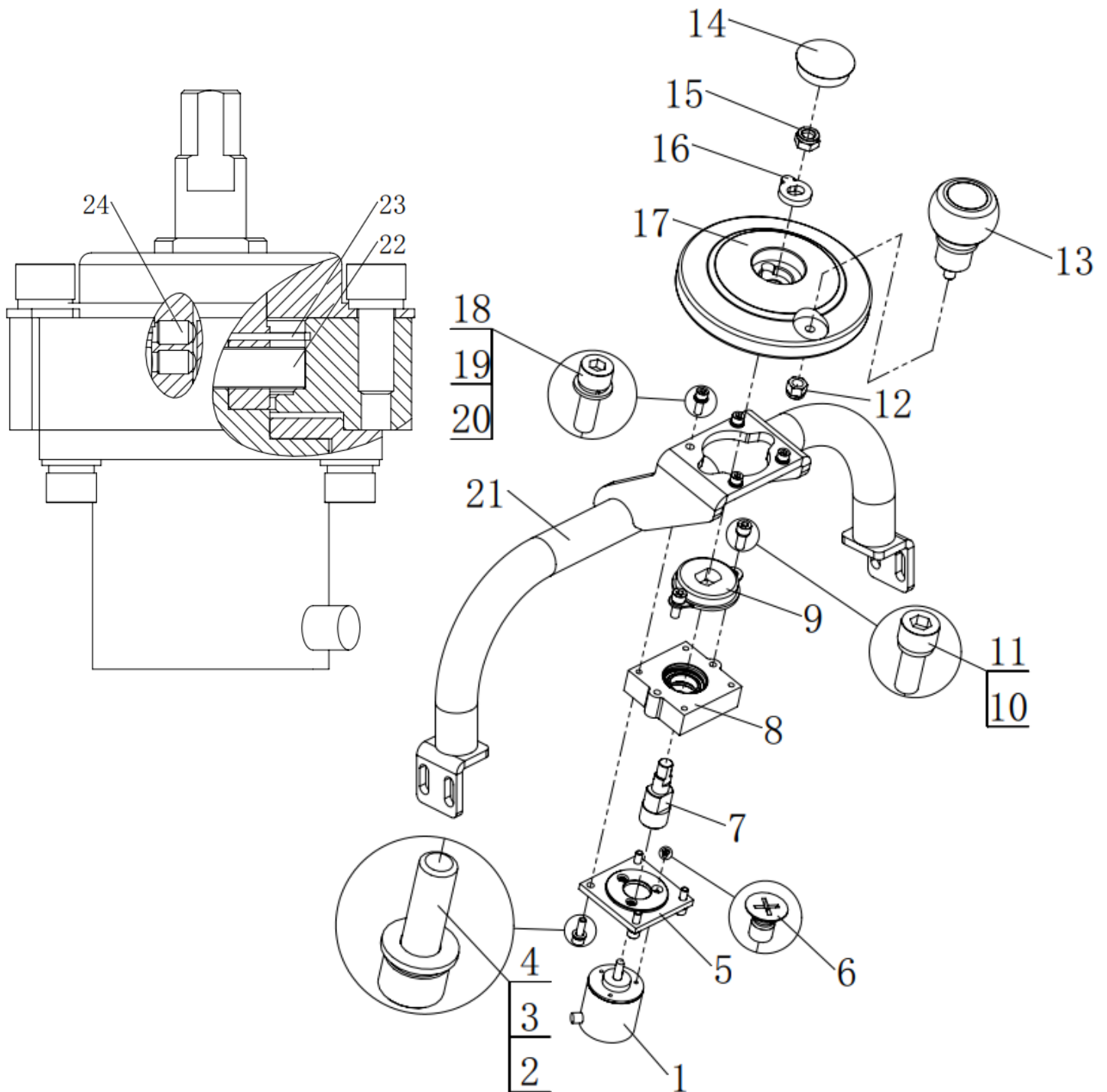
1.1.1 Driving system



1.1.1 Driving system

No.	Code	Description	Specification	QTY	Remark
1	03.0942	Outer hexagonal spherical hub bolts	M14×28×1.5	7	
2	02.QDL.0069	Driving wheel assembly	Φ343×130	1	QGB20S-01.8.2
3	02.01.9166	Gearbox assembly	DDS35	1	
4	QGB20S-01.8.3	Sensor strip		1	
5	19.034653	Inductive proximity switch	CJY12S-04PA	1	
6	E10GS-02.2.3	Mounting sleeve		1	
7	03.0215	Cross recessed pan head screw	M4×12	2	GB/T 818-2000
8	03.0012	Spring Washer	Φ8	11	GB/T 93-1987
9	03.0154	Hexagon socket head cap screws	M8×20	1	GB/T 70.1-2000
10	QGB20S-01.8.4	Big washer		1	
11	EGS18L-01.6.1	Driving backplane		1	
12	03.0157	Hexagon socket head cap screws	M8×30	4	GB/T 70.1-2000
13	02.DJ.2109	Steering motor	Z90DPN48600	1	
14	02.DJ.00834	Driving motor	1R343365	1	
15	02.01.00532	Electromagnetic brake	CDC-C14(45V)90C25	1	
16	03.0159	Hexagon socket head cap screws	M8×40	6	GB/T 70.1-2000
17	03.0050	Flat washer	Φ8	6	GB/T 95-2002
18	03.0189	Hexagon socket head cap screws	M12×50	6	GB/T 70.1-2000
19	03.0015	Spring Washer	Φ12	6	GB/T 93-1987
20	03.0395	Hexagon bolts	M16×70	5	GB/T 5782-2000
21	03.0017	Spring Washer	Φ16	5	GB/T 93-1987
22	03.0047	Flat washer	Φ16	5	GB/T 95-2002
23	03.0088	Hexagon socket countersunk head screws	M6×20	3	GB/T 70.3-2000

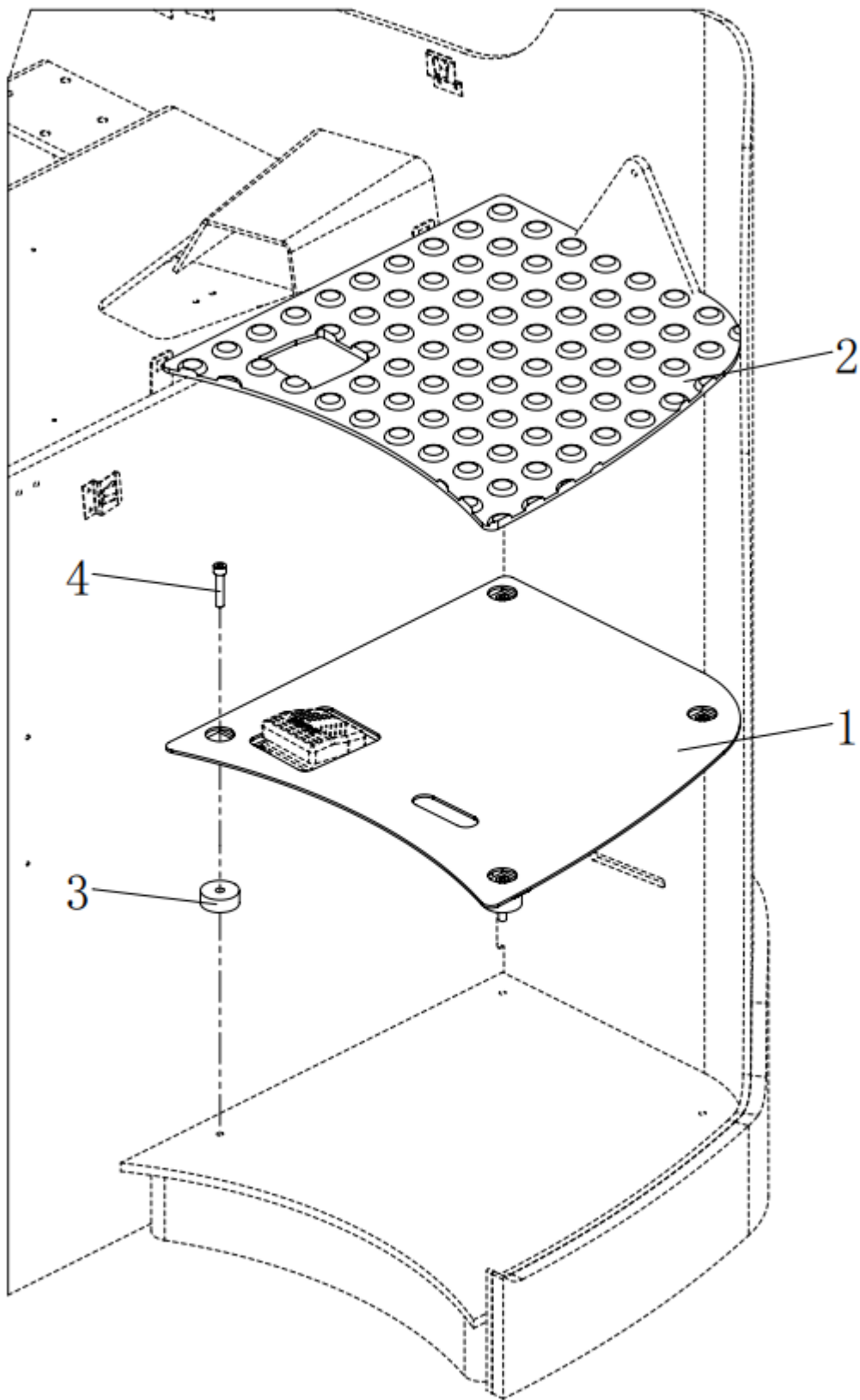
1.1.2 Steering wheel assembly



1.1.2 Steering wheel assembly

No.	Code	Description	Specification	QTY	Remark
1	02.BMQ.2200	Steering encoder	E6B2-CWZ6C	1	
2	03.0055	Flat washer	φ5	4	GB/T 97.1-2002
3	03.0007	Spring Washer	φ5	4	GB/T 93-1987
4	03.0133	Hexagon socket head cap screws	M5×16	4	GB/T 70.1-2000
5	QGB15E-01.6.2.1	Flange		1	
6	03.04171	Cross recessed countersunk head screws	M3×5	3	GB/T 819.1-2000
7	JXG10-02.4.4.1.2	Rotating shaft		1	
8	JXG10-02.4.4.1.1	Encoder seat		1	
9	19.1295	Rotating damper	ZB-48c19	1	0.5Nm
10	03.00133	Spring Washer	φ6	2	GB/T 93-1987
11	03.0147	Hexagon socket head cap screws	M6×16	2	GB/T 70.1-2000
12	03.0244	Hexagon lock nut	M8	1	GB/T 6182-2000
13	02.01.3192	Steering wheel handle ball		1	
14	19.0795	plastic cover	SKT-38	1	
15	03.0243	Hexagon lock nut	M10	1	GB/T 889.1-2000
16	Q15GB-01.7.4.3	Anti-rotation pad		1	
17	Q15GB-01.7.4.1	Steering wheel cover		1	
18	03.0133	Hexagon socket head cap screws	M5×16	4	GB/T 70.1-2000
19	03.0007	Spring Washer	Φ5	4	GB/T 93-1987
20	03.0055	Flat washer	Φ5	4	GB/T 95-2002
21	EGS18L-01.8.1	Steering wheel mounting bracket welding		1	
22	03.90.099	Deep groove ball bearing	61804-2Z	1	GB/T 276-94
23	GB 893.1-86	Circlip for hole	32	1	
24	03.02680	Hexagon socket set screw with flat end	M4×6	2	GB/T 77-2000

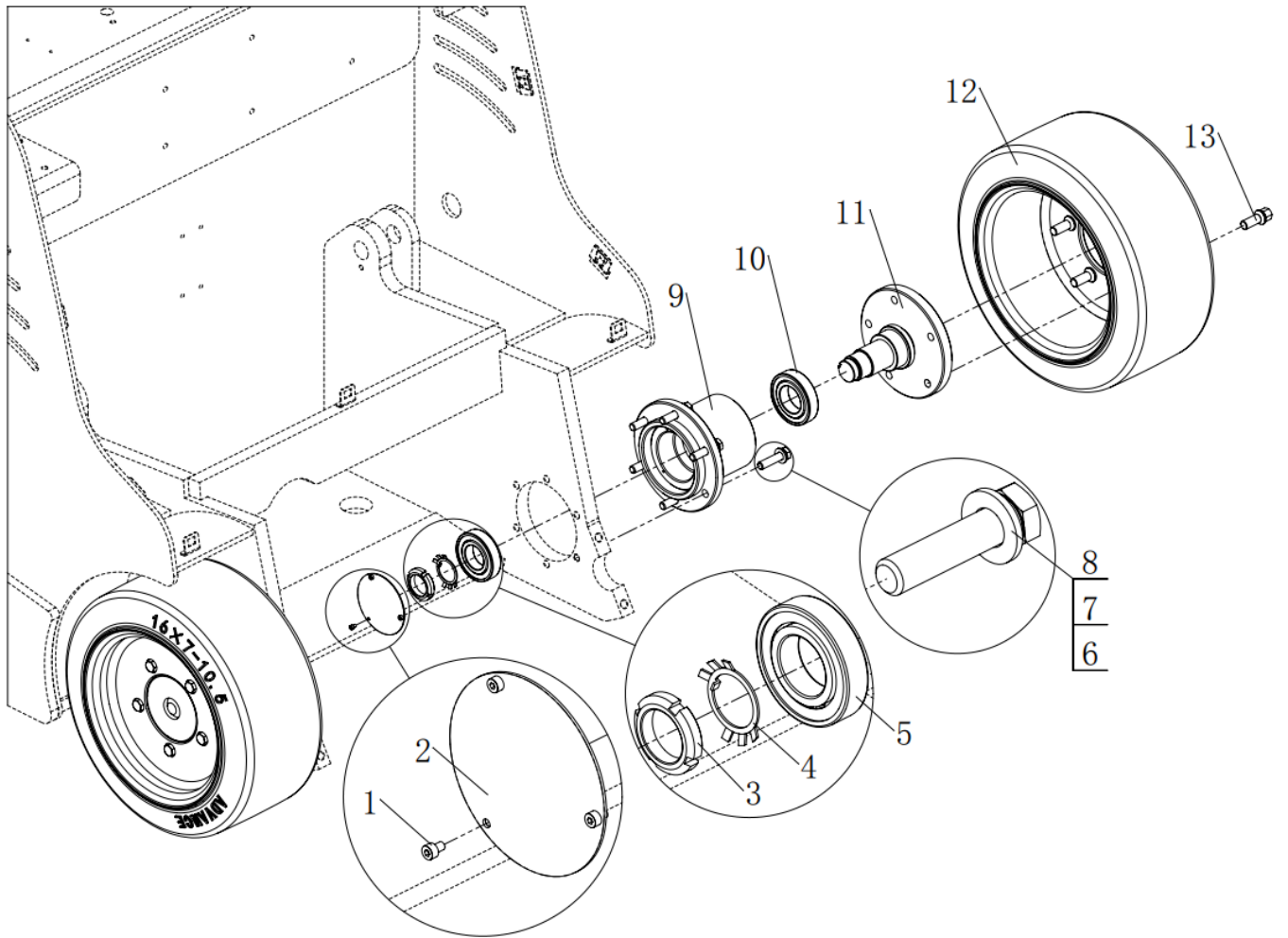
1.1.3Foot pedal assembly



1.1.3Foot pedal assembly

No.	Code	Description	Specification	QTY	Remark
1	EGS18L-01.4.1	Foot pedal welding		1	
2	EGS18L-01.4.2	Foot pad		1	
3	EGS18L-01.4.3	Pedal cushion		4	
4	03.0159	Hexagon socket head cap screws	M8×40	4	GB/T 70.1-2000

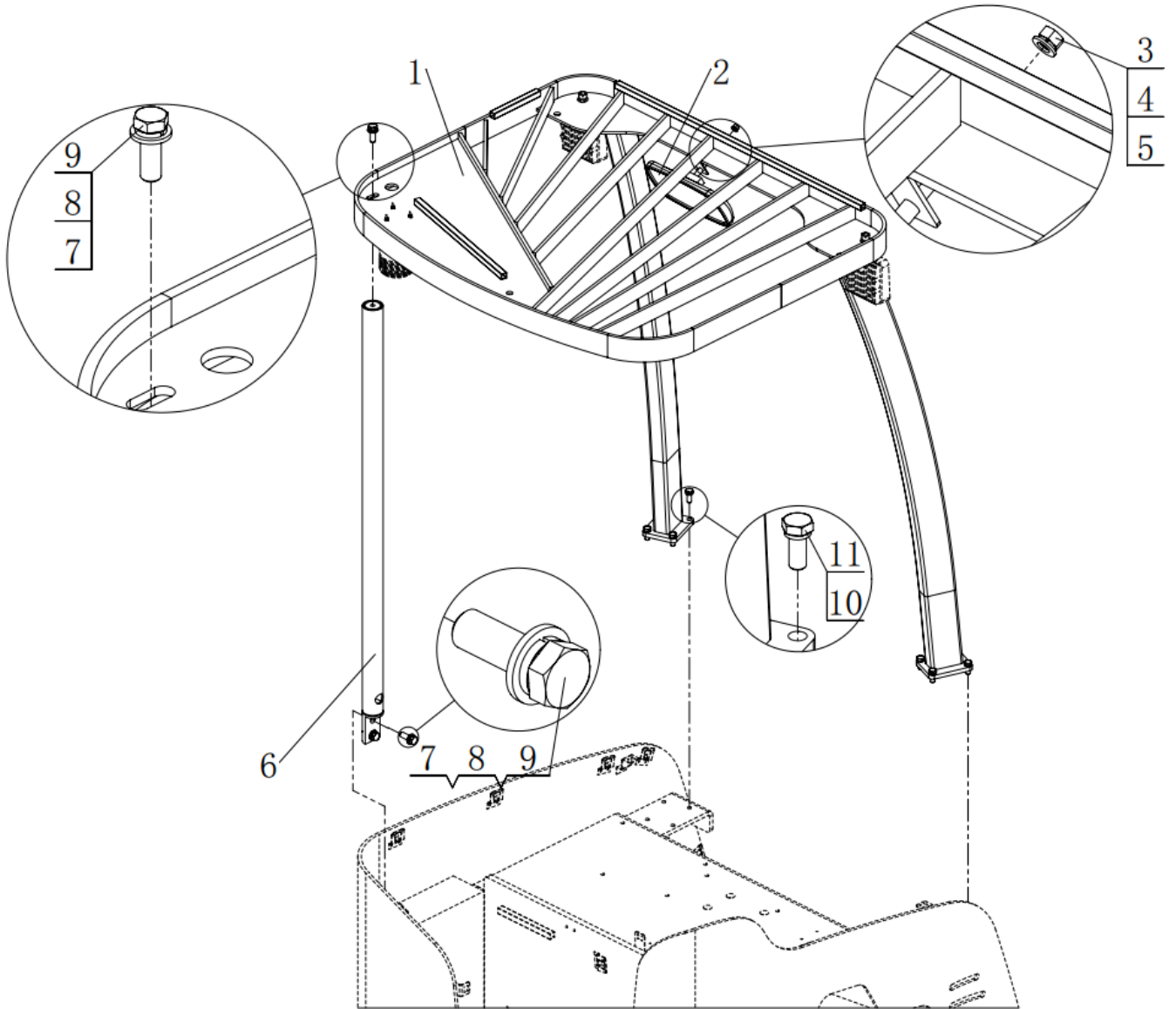
1.1.4 Front wheel assembly



1.1.4 Front wheel assembly

No.	Code	Description	Specification	QTY	Remark
1	03.0127	Hexagon socket head cap screws	M4×6	6	GB/T 70.1-2000
2	EGS18L-01.5.1.3	Dust ring		2	
3	03.0291	Round nut	M35×1.5	2	GB/T 812-1988
4	03.0525	Round nut lock washer	Φ35	2	GB 858-1988
5	03.90.030	Deep groove ball bearing	6208-2Z	2	GB/T 276-94
6	03.0387	Hexagon bolts full thread	M12×50	12	GB/T 5783-2000
7	03.0015	Spring Washer	Φ12	12	GB/T 93-1987
8	03.0044	Flat washer	Φ12	12	GB/T 97.1-2002
9	EGS18L-01.5.1.1	Flange sleeve welding		2	
10	03.90.039	Deep groove ball bearing	6209-2Z	2	GB/T 276-94
11	EGS18L-01.5.1.2	Rotating shaft welding		2	
12	02.LZ.0293	Front wheel	16×7-10.5	2	
13	03.0942	Outer hexagonal spherical hub bolts	M14×28×1.5	10	

1.2 Overhead guard assembly

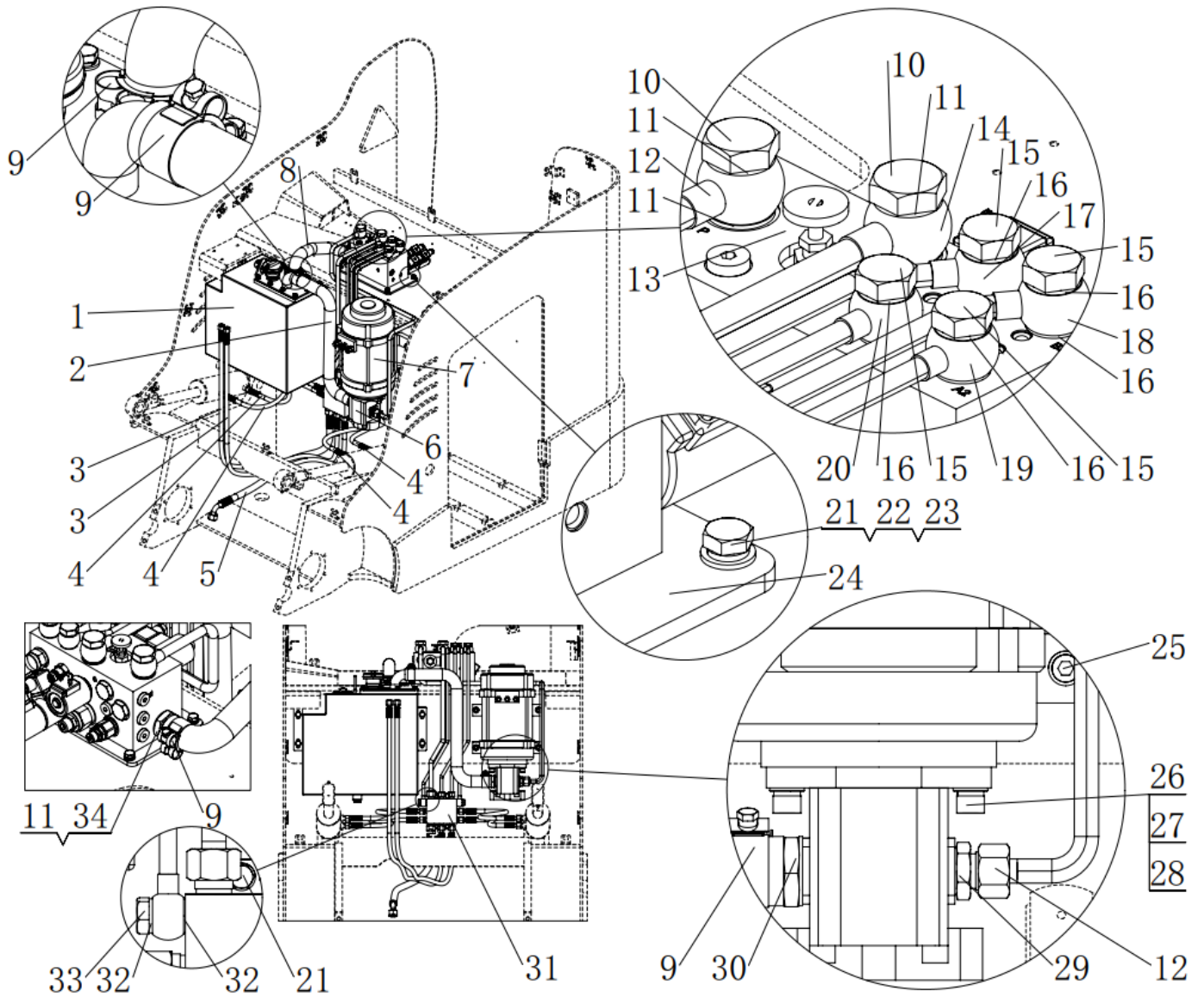


1.2 Overhead guard assembly

No.	Code	Description	Specification	QTY	Remark
1	EGS18L-02.1	Overhead guard welding		1	
2	17.0009	Rearview mirror	HS200×110	1	
3	03.0258	Hexagon nut	M8	1	GB/T 6170-2000
4	03.0012	Spring Washer	Φ8	1	GB/T 93-1987
5	03.0050	Flat washer	Φ8	1	GB/T 95-2002
6	EGS18L-02.2	Post welding		1	
7	03.0044	Flat washer	Φ12	3	GB/T 97.1-2002
8	03.0012	Spring Washer	Φ12	3	GB/T 93-1987
9	03.0786	Hexagon bolts full thread	M12×35	3	GB/T 5783-2000
10	03.0014	Spring Washer	Φ10	8	GB/T 93-1987
11	03.0779	Hexagon bolts full thread	M10×25	8	GB/T 5783-2000

2. Hydraulic system

2.1 Main frame Hydraulic system

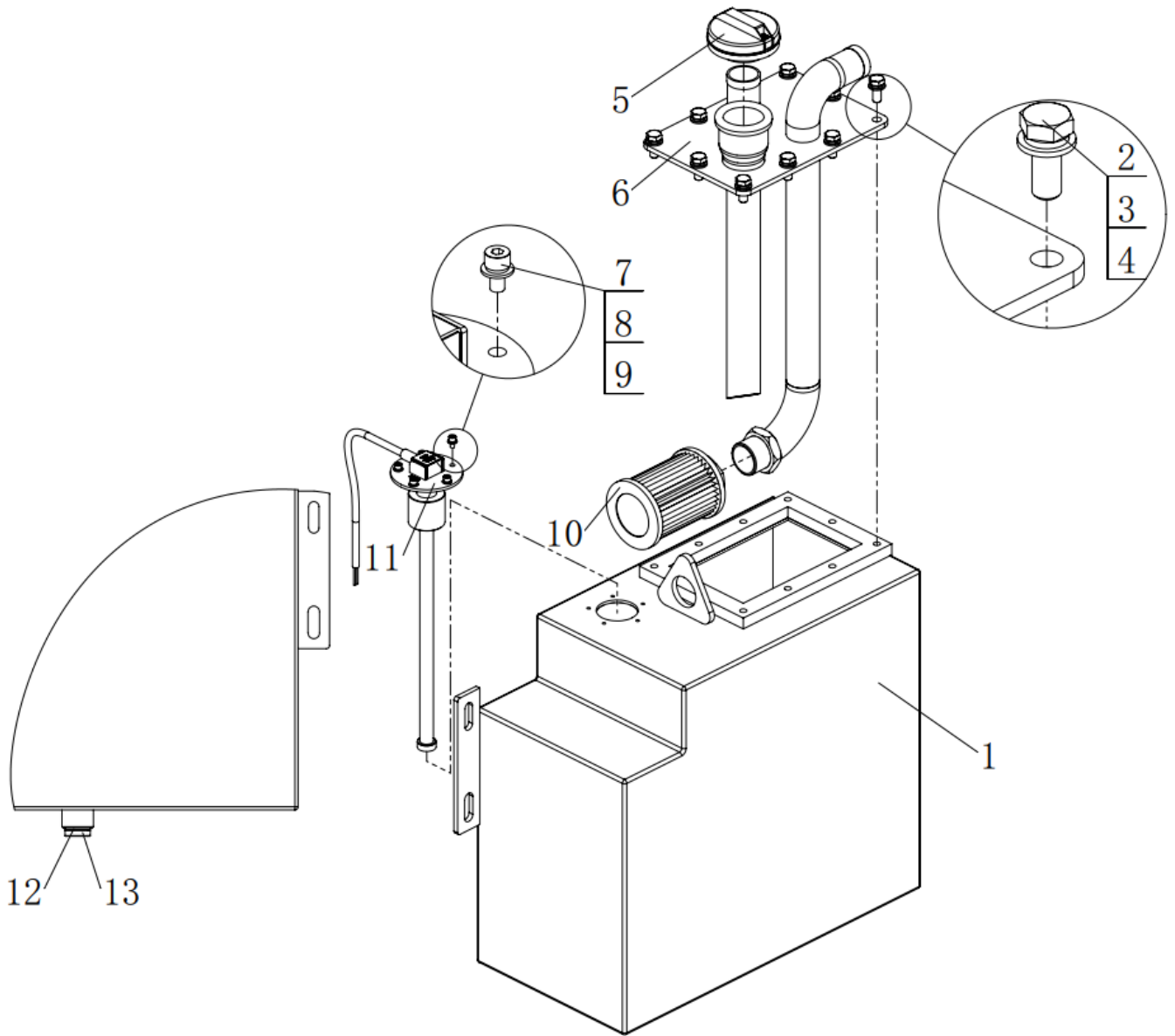


2.1 Main frame Hydraulic system

No.	Code	Description	Specification	QTY	Remark
1	EGS18L-01.9.1	Fuel tank assembly		1	
2	EGS18L-01.9.2	Pump suction pipe		1	
3	EGS18L-01.9.12	Side shift hose		2	
4	EGS18L-01.9.9	Tilt hose		4	
5	EGS18L-01.9.6	Lifting hose		1	
6	02.01.00961	Gear pump (14.5CC)	14.5CC	1	
7	02.DJ.00827	7.7kw Pump motor	7.7kw	1	1U141323
8	EGS18L-01.9.3	Multi-way valve return pipe		1	
9	03.05384	Hoop	Φ40-43	4	
10	CL20GA-12.13 (FB55)	Hinge bolt (British system)		2	
11	03.0486	Combination gasket	Φ22	5	GB892-77
12	EGS18L-01.9.4	Oil pipe		1	
13	02.DLDY.3461	1.5TV Valve group 1	800602499	1	
14	EGS18L-01.9.5	Lifting steel pipe		1	
15	SPN10.8-11	Pumping station oil pipe joint		4	
16	03.0484	Combination gasket	Φ18	9	GB982-77
17	EGS18L-01.9.7	Tilt forward steel pipe		1	
18	EGS18L-01.9.11	Side shift steel pipe 2		1	
19	EGS18L-01.9.10	Side shift steel pipe 1		1	
20	EGS18L-01.9.8	Tilt backward steel pipe		1	
21	03.0357	Hexagon bolts full thread	M8×20	4	GB/T 5783-2000
22	03.0012	Spring Washer	Φ8	4	GB/T 93-1987
23	03.0050	Flat washer	Φ8	4	GB/T 95-2002
24	EGS18L-01.9.13	Solenoid valve lock plate		1	
25	03.0168	Hexagon socket head cap screws	M10×40	4	GB/T 70.1-2000
26	03.0182	Hexagon socket head cap screws	M10×35	2	GB/T 70.1-2000
27	03.0014	Spring Washer	Φ10	6	GB/T 93-1987

28	03.0043	Flat washer	Φ10	6	GB/T 97.2-1985
29	Q15GB-01.6.4	Straight connector		1	
30	Q15GB-01.6.3	Pump connector		1	
31	EGS18L-01.9.14	Valve block		1	
32	03.0482	Combination gasket	Φ14	4	GB892-77
33	Q1545.08-5	Hollow bolt		2	
34	QGB18X-01.5.4	Oil return joint((2)		1	

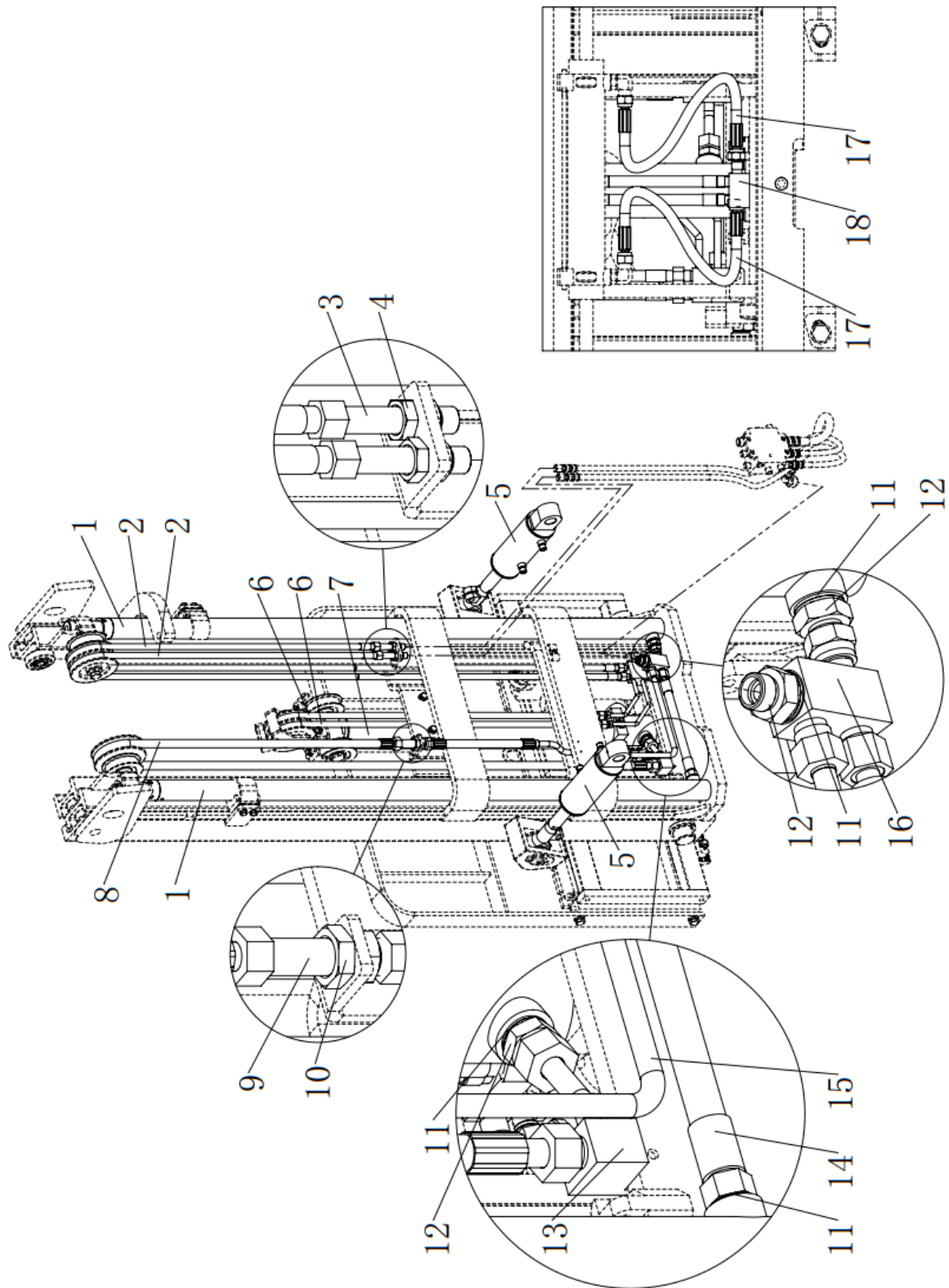
2.1.1 Fuel tank assembly



2.1.1 Fuel tank assembly

No.	Code	Description	Specification	QTY	Remark
1	EGS18L-01.9.1.1	Fuel tank body welding		1	
2	03.0357	Hexagon bolts	M8×20	10	GB/T 5783-2000
3	03.0012	Spring Washer	Φ8	10	GB/T 93-1987
4	03.0050	Flat washer	Φ8	10	GB/T 95-2002
5	02.01.01396	Fuel tank cover		1	
6	EGS18L-01.9.1.2.1	Fuel tank cover welding		1	
7	03.0144	Hexagon socket head cap screws	M4×8	5	GB/T 70.1-2000
8	03.0008	Spring Washer	φ4	5	GB/T 93-1987
9	03.0054	Flat washer	φ4	5	GB/T 97.1-2002
10	02.01.32978	Oil filter M33×2	M33×2	1	
11	19.1421	liquid level sensor	300	1	
12	03.0484	Combination gasket	Φ18	1	GB982-77
13	02.01.30800	Plug	M16×1.5	1	

2.2 Door frame Hydraulic system

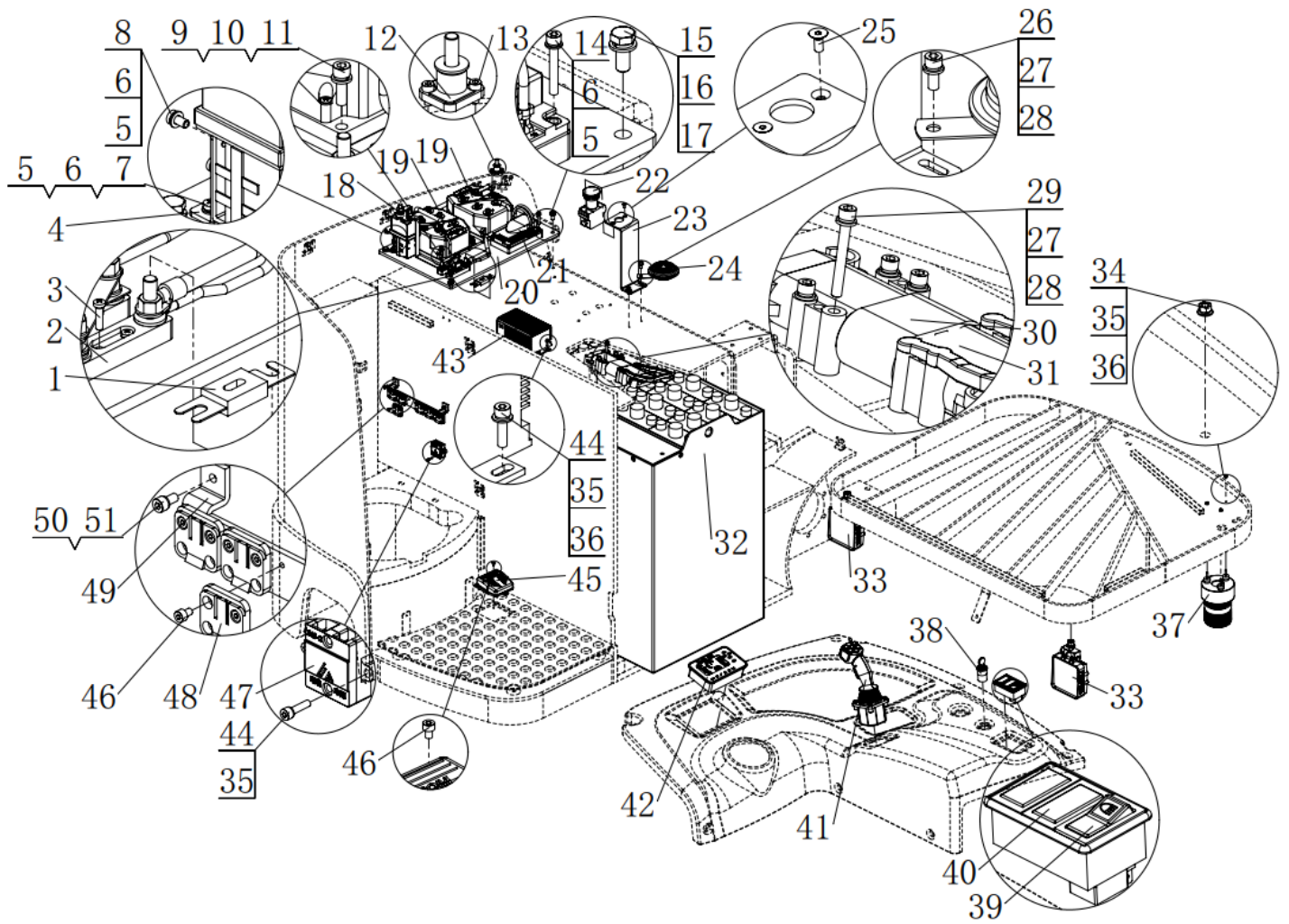


2.2Door frame Hydraulic system

No.	Code	Description	Specification	QTY	Remark
1	E15A-06.5	Lifting oil cylinder assembly		2	
2	E15A-06.9.4	Hose		2	
3	E10GL-06.1.2	Connector		2	
4	03.0281	Hexagon thin nut fine thread	M16×1.5	2	GB/T 6173-2000
5	EGS18L-05.2	Tilt oil cylinder assembly		2	
6	E15A-06.9.5	Hose		2	
7	E15A-06.6	Inner oil cylinder		1	
8	E15A-06.9.2	Lifting hose		1	
9	Q15GB-04.7.5	Connector		1	
10	03.0286	Hexagon thin nut	M22×1.5	1	GB/T 6173-2000
11	03.0486	Combination gasket	Φ22	4	GB892-77
12	E10GS-01.11.8	Straight joint		3	
13	E15A-06.9.3	Steel pipe		1	
14	E15A-05.6.2	High-pressure hose		1	
15	E15A-06.9.1	Steel pipe		1	
16	E15A-06.9.7	T- connector		1	
17	E25A-05.7.7	Short Side shift tubing(connect to pallet rack)		2	
18	E25A-06.5.9	Side shift tubing Socket welding		1	

3. Electrical System

3.1 Electrical Assembly



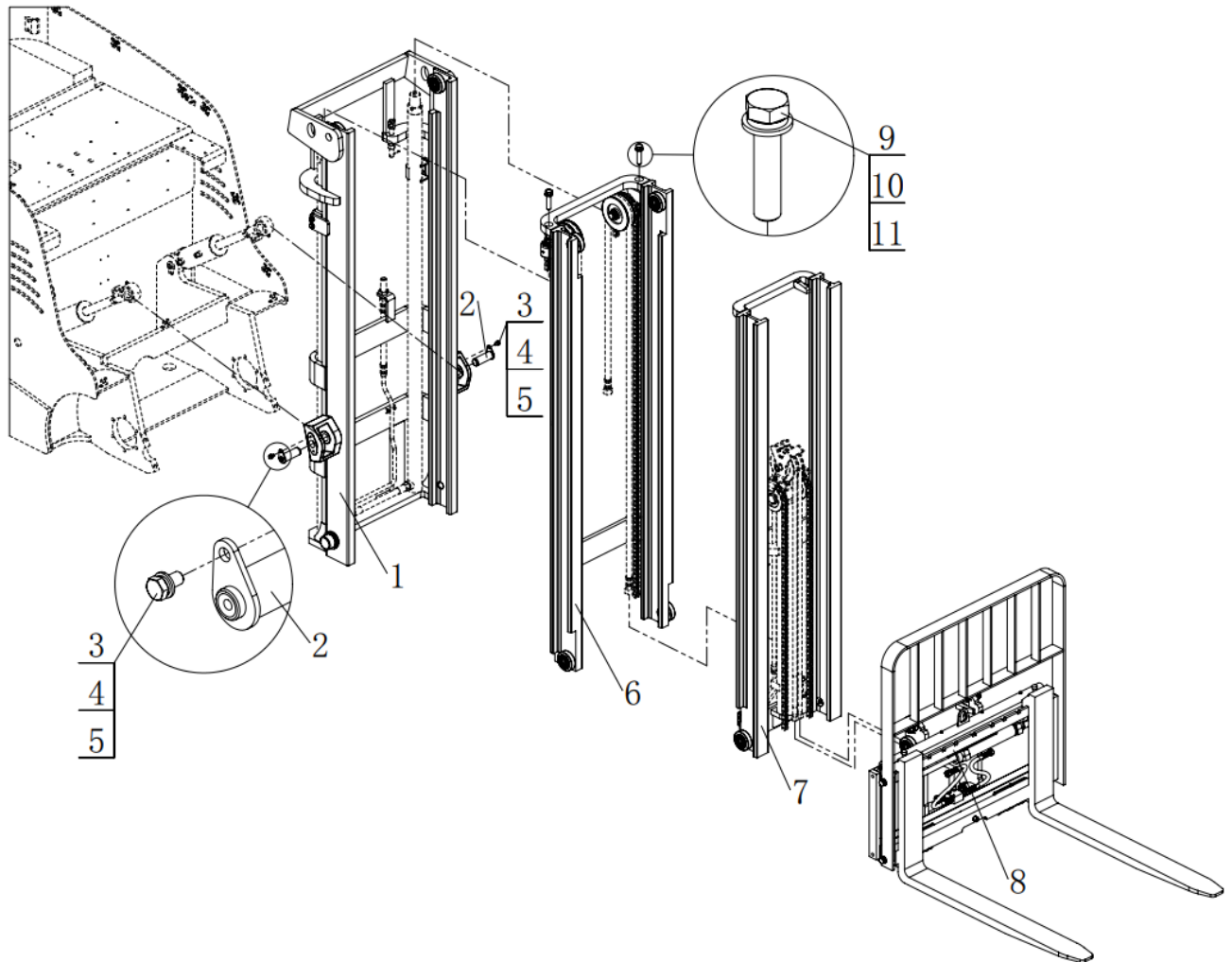
3.1 Electrical Assembly

No.	Code	Description	Specification	QTY	Remark
1	02.01.20001	Fuse	300A	2	
2	02.01.3057	Fuse base	SY Y	2	
3	GB 823-88	Cross recessed small pan head screws	M4×16	4	
4	QGB18X-DK.01.10	Connector bracket		1	
5	03.0055	Flat washer	Φ5	8	GB/T 95-2002
6	03.0007	Spring Washer	Φ5	8	GB/T 93-1987
7	03.0226	Cross recessed pan head screw	M5×12	2	GB 823-88
8	03.02360	Cross recessed pan head screw	M5×10	4	GB/T 818-2000
9	03.0049	Flat washer	Φ6	19	GB/T 95-2002
10	03.00133	Spring Washer	Φ6	19	GB/T 93-1987
11	03.0149	Hexagon socket head cap screws	M6×20	18	GB/T 70.1-2000
12	16.0543	Negative terminal		1	
13	03.0123	Hexagon socket head cap screws	M4×10	2	GB/T 70.1-2000
14	03.01340	Hexagon socket head cap screws	M5×35	2	GB/T 70.1-2000
15	03.0357	Hexagon bolts full thread	M8×20	5	GB/T 5783-2000
16	03.0012	Spring Washer	Φ8	5	GB/T 93-1987
17	03.0050	Flat washer	Φ8	5	GB/T 95-2002
18	02.01.21620	Main Connector	48V/400A	1	
19	02.KZQ.2306	AC controller	1232SE-5321	2	
20	QGB18X-DK.01.1	Electric control aluminum plate	450*300*8	1	
21	02.KZQ.2163	Steering controller	1220E-5401	1	
22	02.01.2248	Emergency stop switch	ZDK32-350	1	
23	EGS18L-01.14	Emergency stop switch Mounting plate		1	
24	02.01.2218	Horn (small)	24V	1	

25	03.0083	Hexagon socket countersunk head screws	M5×12	2	GB/T 70.3-2000
26	03.0147	Hexagon socket head cap screws	M6×16	2	GB/T 70.1-2000
27	03.00133	Spring Washer	Φ6	6	GB/T 93-1987
28	03.0049	Flat washer	Φ6	6	GB/T 95-2002
29	03.0545	Hexagon socket head cap screws	M6×50	4	GB/T 70.1-2000
30	02.01.21902	Q15GB Connector	320A Female	1	
31	02.01.21901	Q15GB Connector	320A male	1	
32	EGS18L-01.7.1	Battery box		1	
33	19.0334	Headlight	PDL-AS27-01	2	
34	03.0254	Hexagon nut	M4	3	GB/T 6170-2000
35	03.0008	Spring Washer	Φ4	9	GB/T 93-1987
36	03.0054	Flat washer	Φ4	7	GB/T 97.1-2002
37	02.01.33532	Rotating warning light	24V	1	
38	02.01.2186	Electric lock		1	
39	16.0319	One gear two plug headlight switch		1	
40	16.0440	Triple switch box		1	
41	02.SB.3191	joystick	JC6000-0273	1	
42	02.DLB.21544	Curtis instrument	3501TB-5004	1	
43	02.01.21480	DC DC converter	24V	1	
44	03.0124	Hexagon socket head cap screws	M4×16	6	GB/T 70.1-2000
45	02.01.2236	Foot switch	HRF-M2Y	1	
46	03.0127	Hexagon socket head cap screws	M4×6	15	GB/T 70.1-2000
47	02.01.0284	SL13 Driving motor junction box	JX6-2	1	
48	SL30GB-01.4.7	Wire base		6	
49	SL20GA-01.15	Wire connector seat		1	
50	03.0007	Spring Washer	Φ5	2	GB/T 93-1987
51	03.0139	Hexagon socket head cap screws	M5×10	2	GB/T 70.1-2000

4. Door frame system

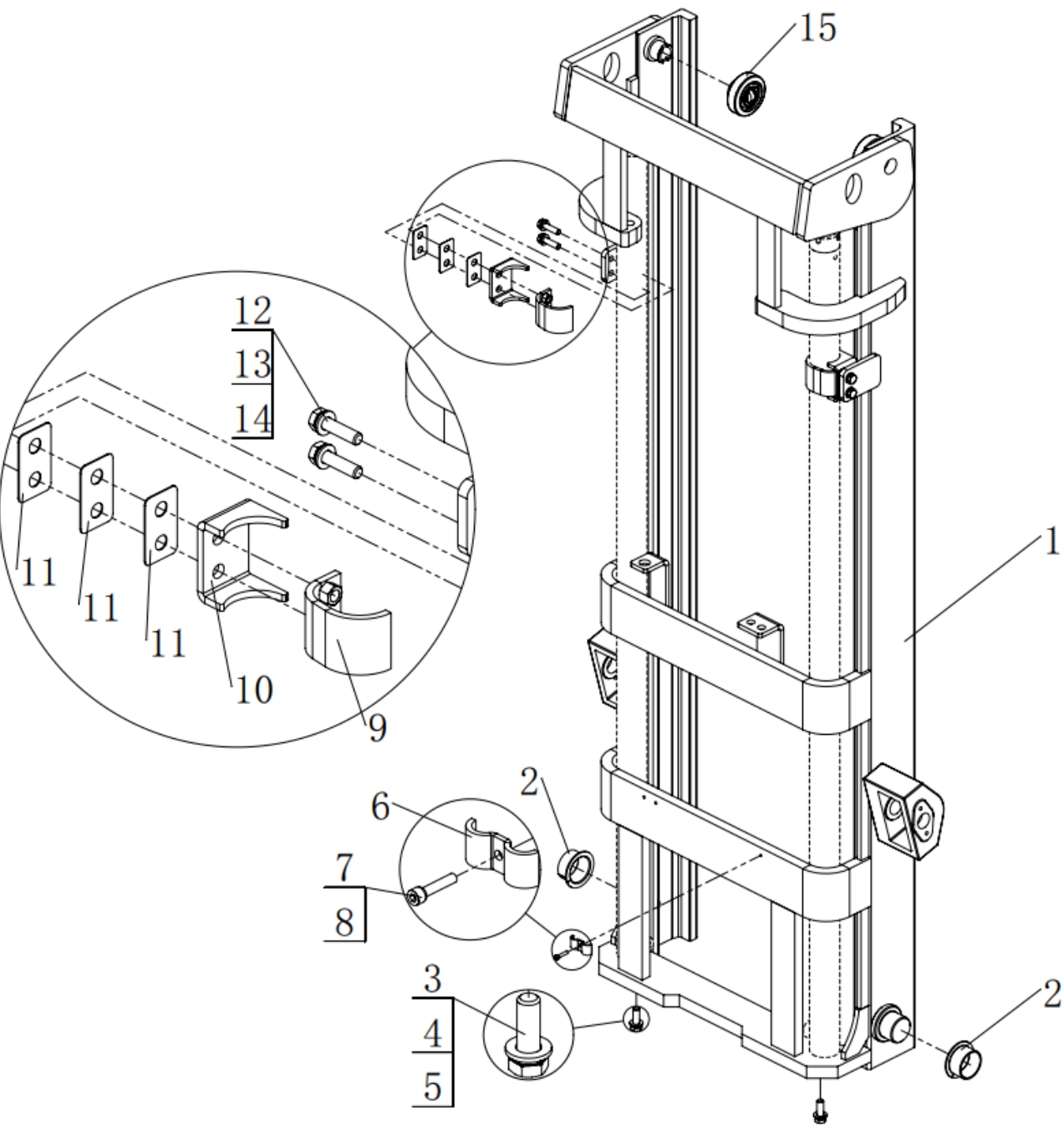
4.1 Door frame assembly



4.1 Door frame assembly

No.	Code	Description	Specification	QTY	Remark
1	EGS18L-05.1	Outer mast welding		1	
2	Q15GB-01.12	Tilt oil cylinder pin welding		2	
3	03.0373	Hexagon bolts full thread	M8×16	2	GB/T 5783-2000
4	03.0012	Spring Washer	Φ8	2	GB/T 93-1987
5	03.0050	Flat washer	Φ8	2	GB/T 95-2002
6	E15A-06.2	Middle mast welding		1	
7	E15A-06.3	Inner mast welding		1	
8	E15A-06.4	Fork Carriage assembly		1	
9	03.0941	Hexagon bolts thin thread	M16×1.5×70	2	GB/T 5786-2000
10	03.0017	Spring Washer	Φ16	2	GB/T 93-1987
11	03.0047	Flat washer	Φ16	2	GB/T 95-2002

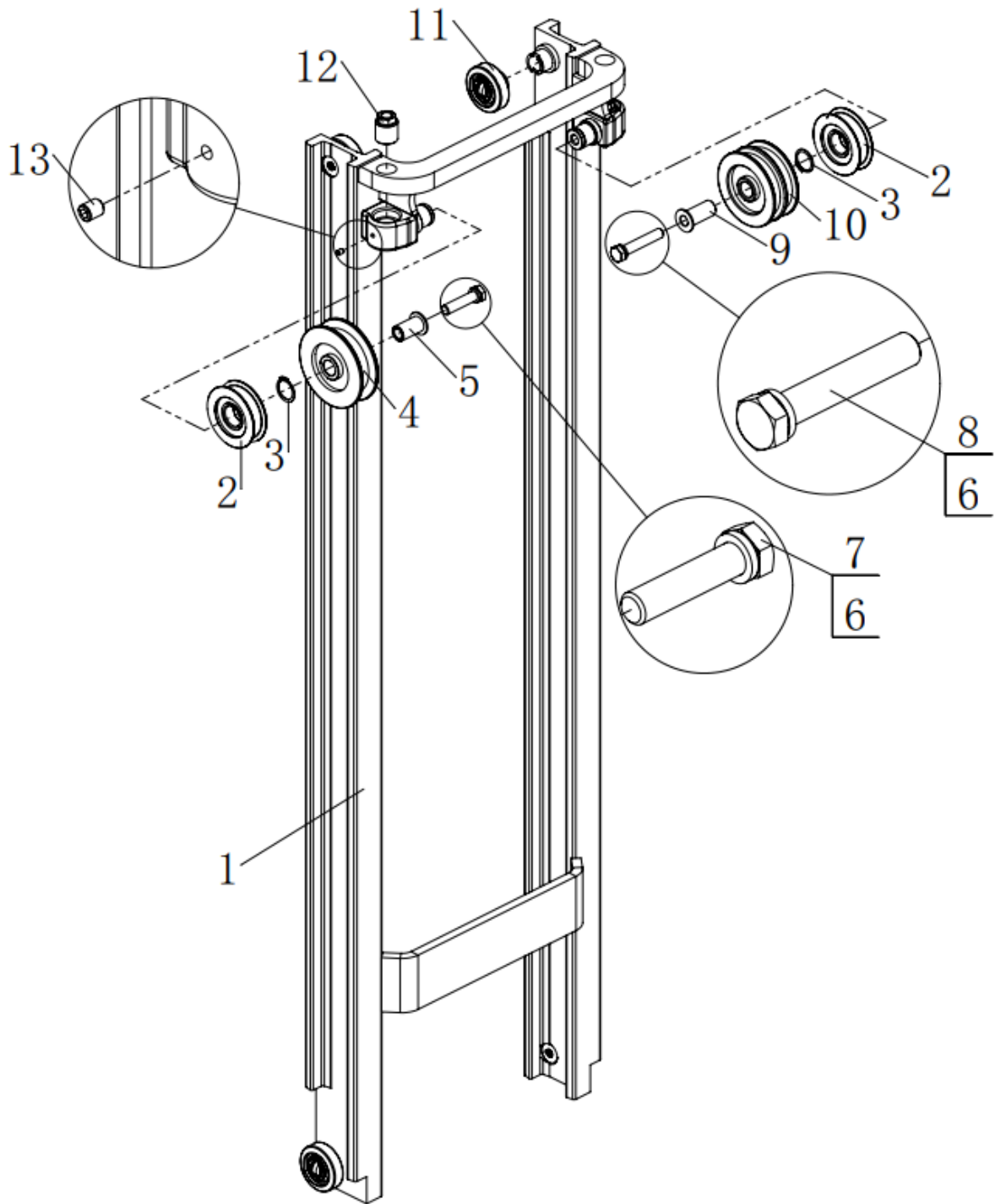
4.1.1 Outer mast welding



4.1.1 Outer mast welding

No.	Code	Description	Specification	QTY	Remark
1	EGS18L-05.1.1	Outer mast welding		1	
2	03.04422	Composite set with shoulder	$\Phi 35 \times \Phi 28 \times \Phi 25 \times 27$	2	
3	03.0786	Hexagon bolts full thread	M12×35	2	GB/T 5783-2000
4	03.0044	Flat washer	$\Phi 12$	2	GB/T 95-2002
5	03.0015	Spring Washer	$\Phi 12$	2	GB/T 93-1987
6	Q15GC-02.3.3.3	Pipe clamp		1	
7	03.01410	Hexagon socket head cap screws	M5×25	1	GB/T 70.1-2000
8	03.0007	Spring Washer	$\Phi 5$	1	GB/T 93-1987
9	E15A-05.1.2.1	Cylinder hoop welding		2	
10	E15A-05.1.2.4	Hoop bending plate		2	
11	E15A-05.1.2.2	Hoop Washer 1		6	
12	03.0354	Hexagon bolts full thread	M10×40	4	GB/T 5783-2000
13	03.0043	Flat washer	$\Phi 10$	4	GB/T 95-2002
14	03.0014	Spring Washer	$\Phi 10$	4	GB/T 93-1987
15	02.01.3068	Combination roller	CRA78.3-12S	2	

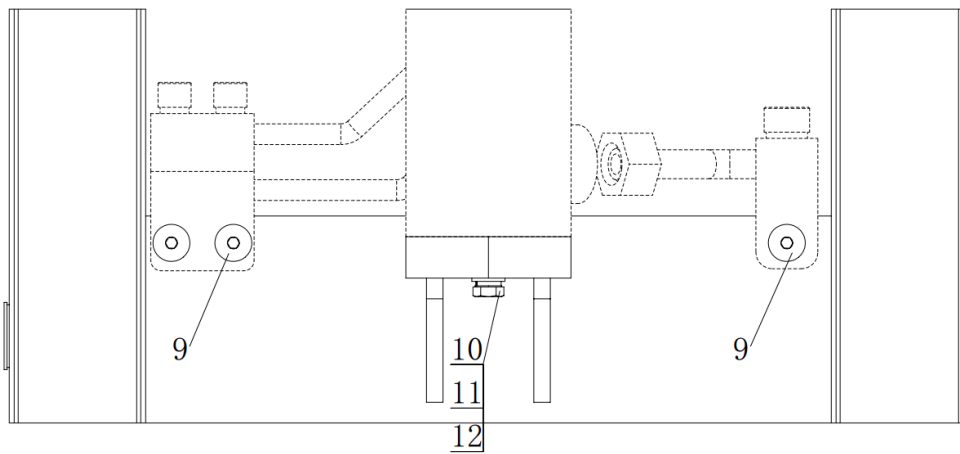
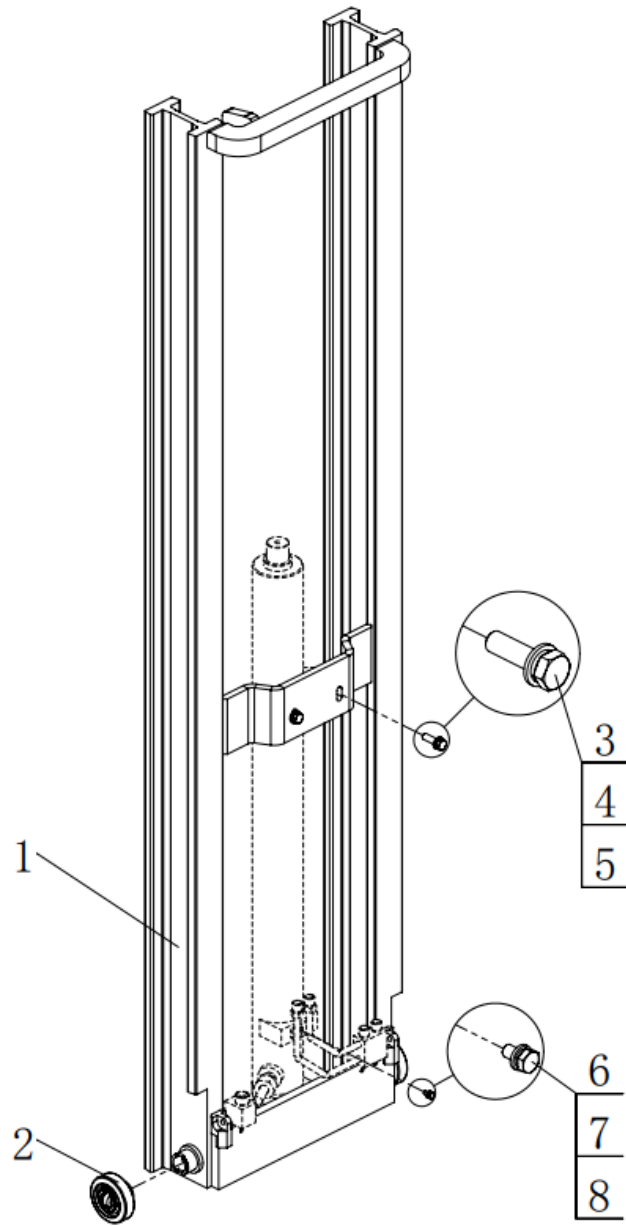
4.1.2 Middle mast welding



4.1.2 Middle mast welding

No.	Code	Description	Specification	QTY	Remark
1	E15A-06.2.1	Middle mast welding		1	
2	30.05.180	Mast sprocket	CG35A1-2	2	
3	03.0583	Circlip for shaft	35	2	GB 894.2-86
4	Q15GB-04.2.4	Tubing sprocket (3)		1	
5	Q15GB-04.2.5	Shaft sleeve (3)		1	
6	03.0017	Spring Washer	Φ16	2	GB/T 93-1987
7	03.0395	Hexagon bolts	M16×70	1	GB/T 5782-2000
8	03.0391	Hexagon bolts	M16×90	1	GB/T 5782-2000
9	Q15GB-02.2.3	Shaft sleeve		1	
10	Q15GB-02.2.2	Tubing sprocket		1	
11	02.01.3068	Combination roller	CRA78.3-12S	4	
12	E25A-05.6	Lifting cylinder adjusting screw sleeve		2	
13	03.02701	Hexagon socket set screw with flat end	M8×10	2	GB/T 77-2000

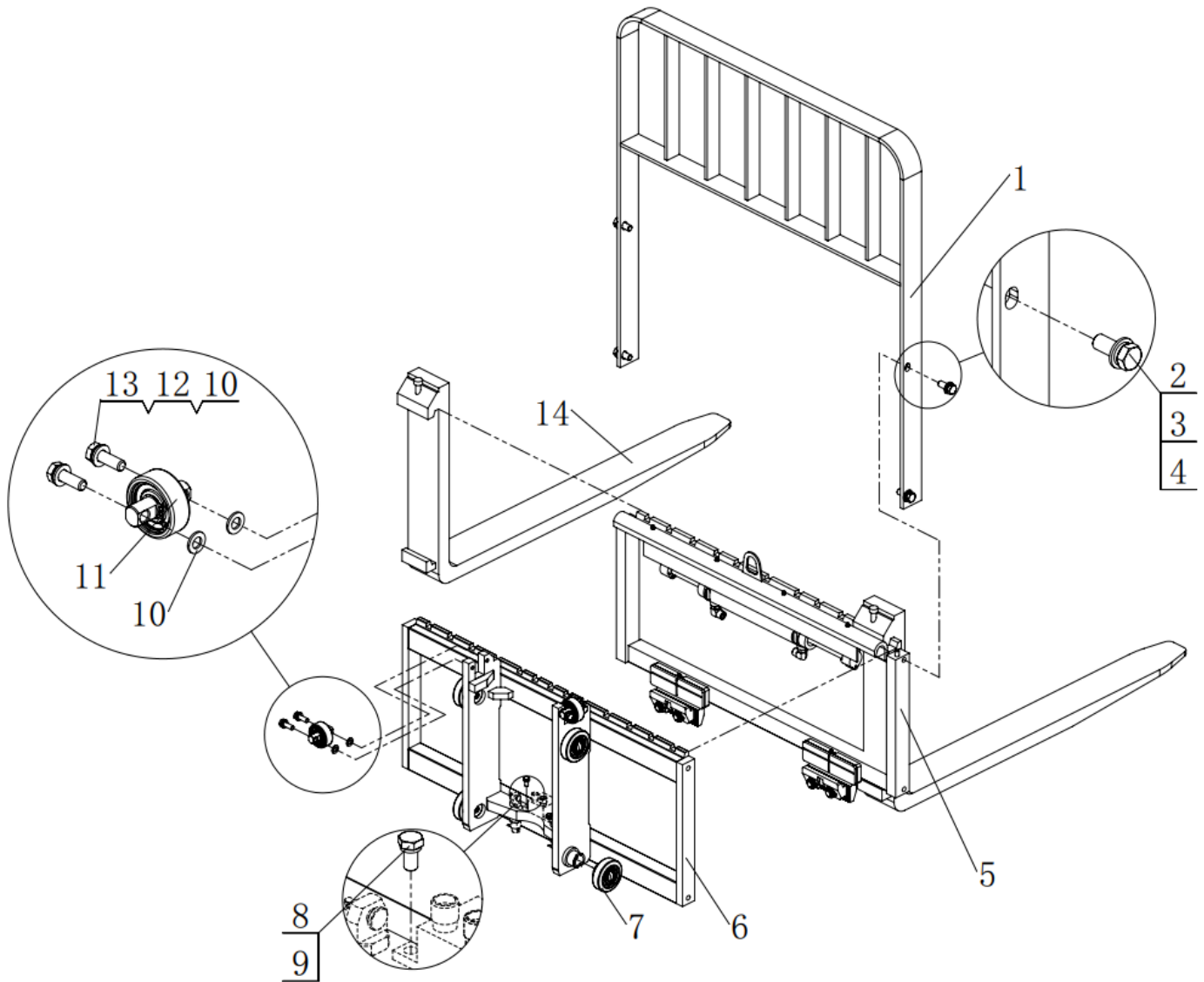
4.1.3 Inner mast welding



4.1.3 Inner mast welding

No.	Code	Description	Specification	QTY	Remark
1	E15A-06.3.1	Inner mast welding		1	
2	02.01.3068	Combination roller	CRA78.3-12S	2	
3	03.0777	Hexagon bolts full thread	M10×35	2	GB/T 5783-2000
4	03.0043	Flat washer	Φ10	2	GB/T 95-2002
5	03.0014	Spring Washer	Φ10	2	GB/T 93-1987
6	03.0857	Hexagon bolts full thread	M6×12	1	GB/T 5783-2000
7	03.0011	Spring Washer	Φ6	1	GB/T 93-1987
8	03.0049	Flat washer	Φ6	1	GB/T 95-2002
9	03.0092	Hexagon socket countersunk head screws	M8×20	3	GB/T 70.3-2000
10	03.0050	Flat washer	Φ8	1	GB/T 95-2002
11	03.0012	Spring Washer	Φ8	1	GB/T 93-1987
12	03.0358	Hexagon bolts full thread	M8×40	1	GB/T 5783-2000

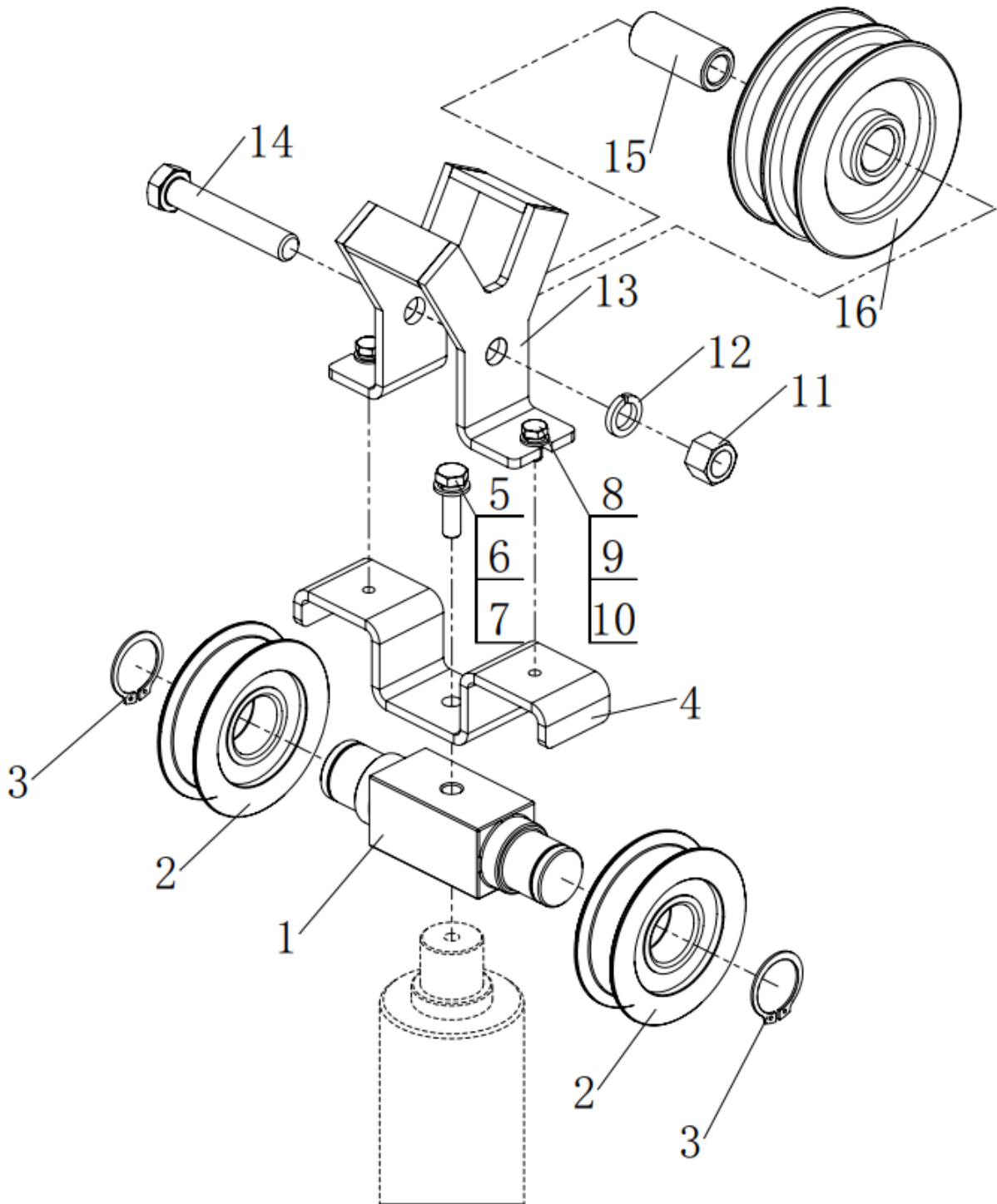
4.1.4 Fork Carriage assembly



4.1.4 Fork Carriage assembly

No.	Code	Description	Specification	QTY	Remark
1	E15A-05.3.2	Shelf welding		1	
2	03.0548	Hexagon bolts full thread	M14×40	4	GB/T 5783-2000
3	03.00135	Spring Washer	Φ14	4	GB/T 93-1987
4	03.0045	Flat washer	Φ14	4	GB/T 95-2002
5	02.01.2303	Sider shifter assembly		1	
6	E15A-06.4.1.1	Wheel frame welding		1	
7	02.01.3068	Combination roller	CRA78.3-12S	4	
8	03.0373	Hexagon bolts full thread	M8×16	2	GB/T 5783-2000
9	03.0012	Spring Washer	Φ8	2	GB/T 93-1987
10	03.0043	Flat washer	Φ10	8	GB/T 95-2002
11	02.01.3690	Side roller	SR48D58-1T	2	
12	03.0014	Spring Washer	Φ10	4	GB/T 93-1987
13	03.0778	Hexagon bolts full thread	M10×30	4	GB/T 5783-2000
18	Q1545.06.04-5	Fork		2	

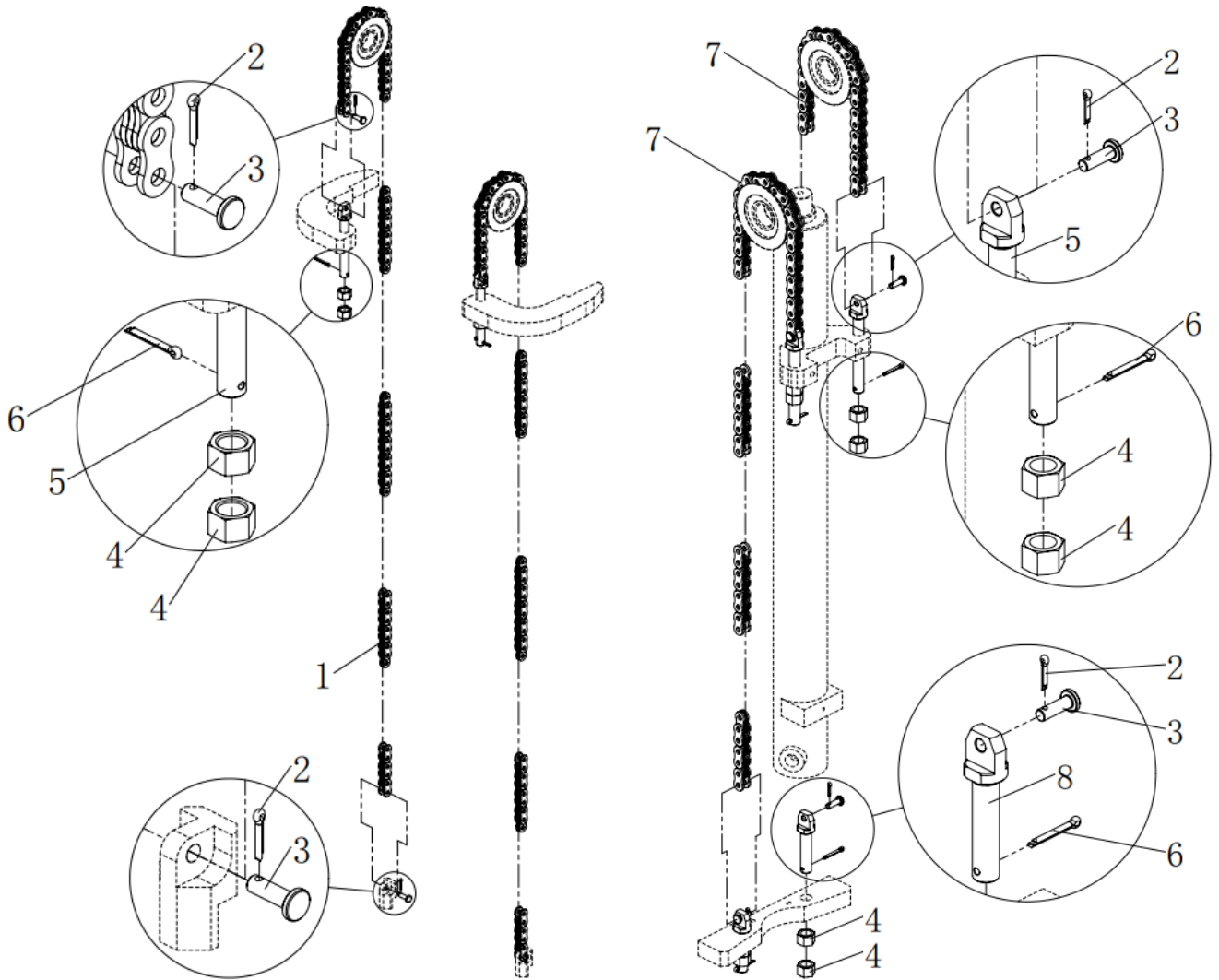
4.1.5 Sprocket frame assembly



4.1.5 Sprocket frame assembly

No.	Code	Description	Specification	QTY	Remark
1	E15A-06.8.1	Top seat		1	
2	30.05.180	Mast sprocket	CG35A1-2	2	
3	03.0583	Circlip for shaft	35	2	GB 894.2-86
4	E25A-06.6.4	Bottom plate		1	
5	03.0777	Hexagon bolts full thread	M10×35	1	GB/T 5783-2000
6	03.0014	Spring Washer	Φ10	1	GB/T 93-1987
7	03.0043	Flat washer	Φ10	1	GB/T 95-2002
8	03.0373	Hexagon bolts full thread	M8×16	2	GB/T 5783-2000
9	03.0012	Spring Washer	Φ8	2	GB/T 93-1987
10	03.0050	Flat washer	Φ8	2	GB/T 95-2002
11	03.0260	Hexagon nut	M16	1	GB/T 41-2000
12	03.0017	Spring Washer	Φ16	1	GB/T 93-1987
13	E25A-06.6.1	Tubing Wheel frame welding		1	
14	03.0391	Hexagon bolts	M16×90	1	GB/T 5782-2000
15	E25A-06.6.2	spacer bush		1	
16	Q15GB-02.2.2	Tubing sprocket		1	

4.2 Chain assembly



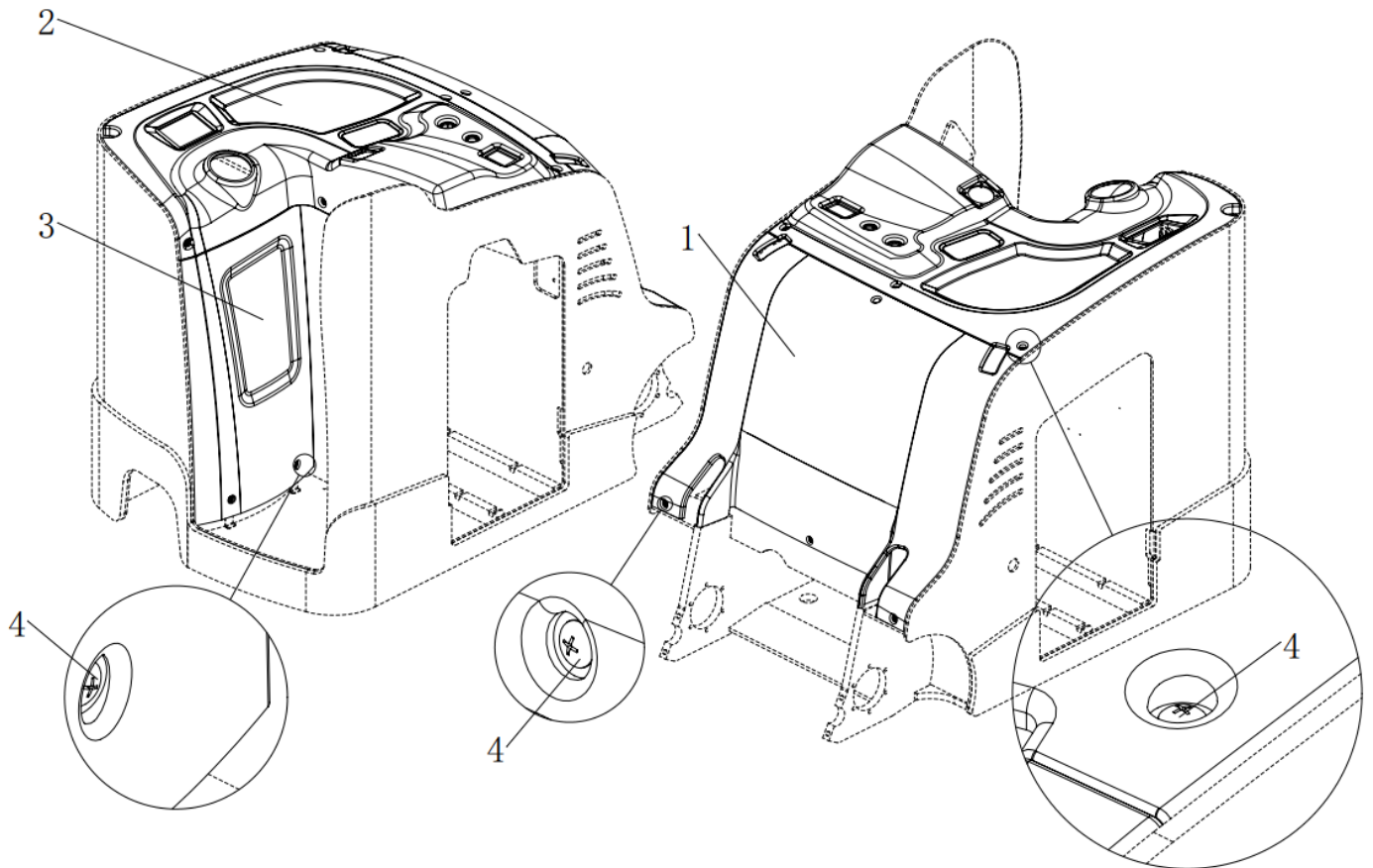
4.2Chain assembly

No.	Code	Description	Specification	QTY	Remark
1	02.LT.3487	Leaf chain	LH1223 (BL623)	2	
2	03.0557	Cottor pin	3×20	8	GB/T 91-2000
3	Q15GB-02.3.8	pull rod pin roll		8	
4	03.0260	Hexagon nut	M16	12	GB/T 6170- 2000
5	Q15GB-02.1.3	Chain pull rod		4	
6	03.0339	Cottor pin	4×30	6	GB/T 91-2000
7	02.LT.3488	Leaf chain	LH1223 (BL623)	2	
8	E15A-05.7	Chain pull rod		2	

Lifting height	Chain Specification	Chain Model	QTY
4500	107 Piece	LH1223 (BL623)	2
	71 Piece	LH1223 (BL623)	2

5.Cover system

5.1Cover assembly



5.1 Cover assembly

No.	Code	Description	Specification	QTY	Remark
1	EGS18L-03.3	Front baffle cover		1	
2	EGS18L-03.2	Upper cover		1	
3	EGS18L-03.4	Driving cover		1	
4	03.02393	Large flat head cross screw	M6×16	11	GB 973-1976

Note: the manufacturer reserves the right of interpretation.

If have change not notice additionally!!