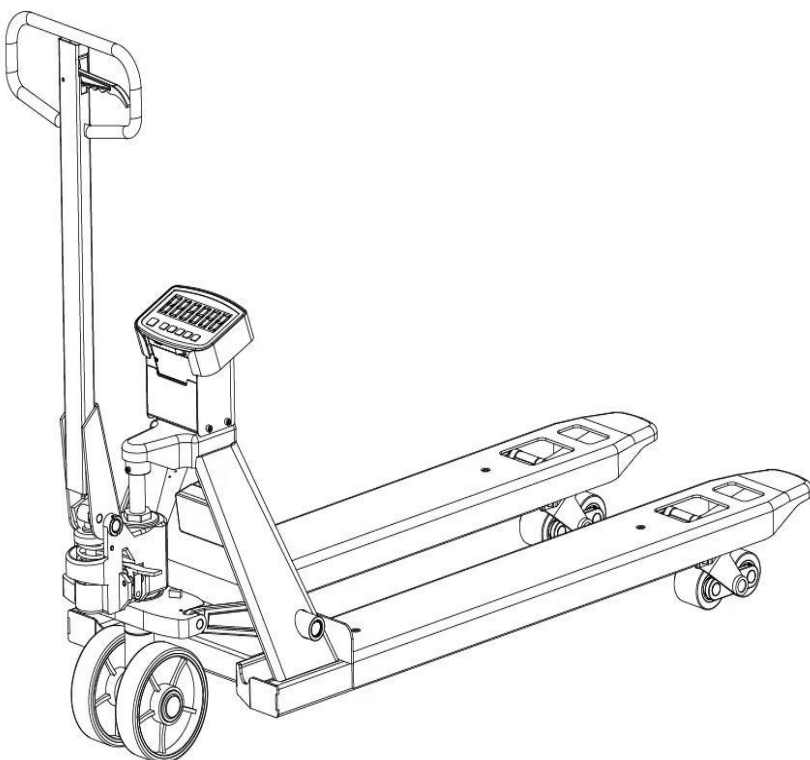




Scale Truck Model A25W/L

## Operation manual & Spare parts list



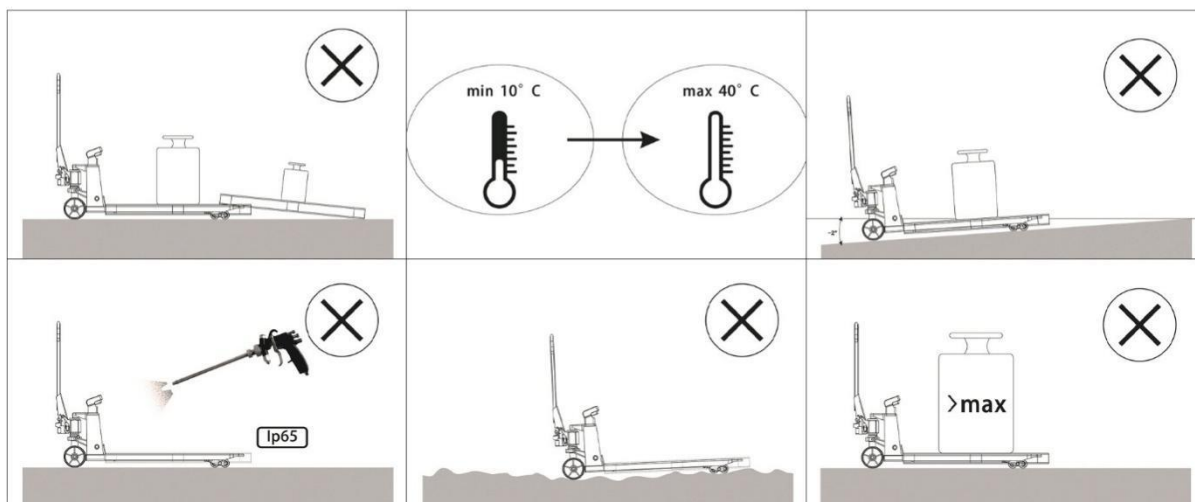
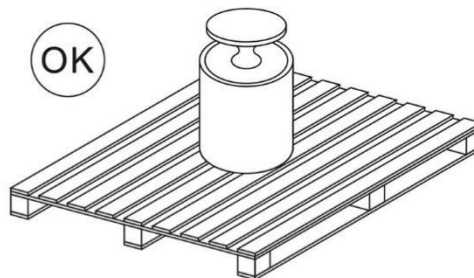
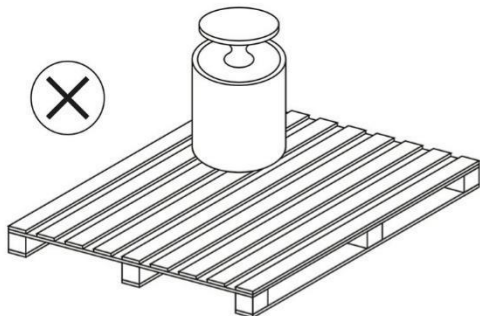
Thanks for using our scale truck, which was designed to compact with long durable performance, easy operation and convenient maintenance.

For your safety and correct operation, please read this instruction carefully before using.

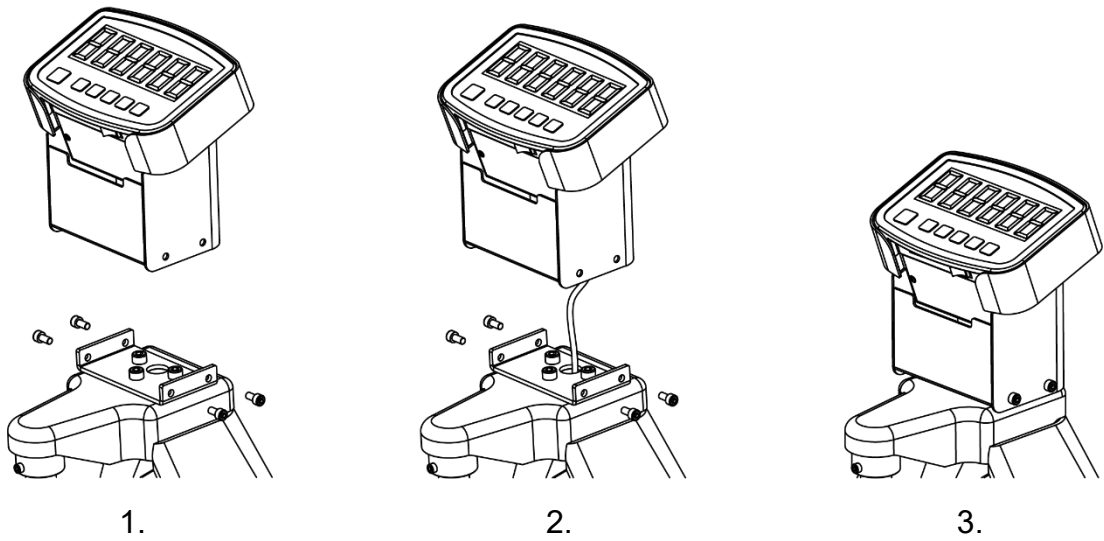
## 1. Parameters

Weighing capacity	4400Lbs /5500Lbs/6600Lbs
Battery specification	7.4V
Working time	72h
Charging time	6~8h
Using environment	dry
Applicable temperature	-10~40degree
Weighing accuracy	±1.1Lbs
Accuracy grade	Grade III
Printing interface	RS232(Only support customized thermal label printer)

## 2. Notices



### 3. Instrument installation

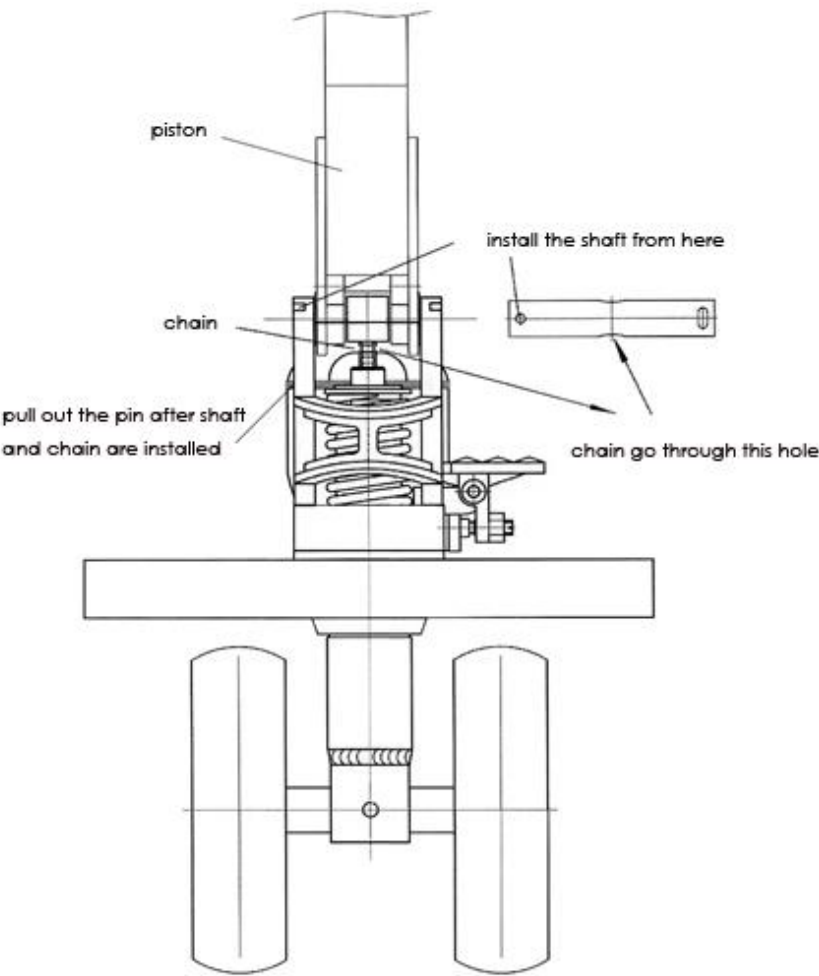


1.  
install support base of instrument

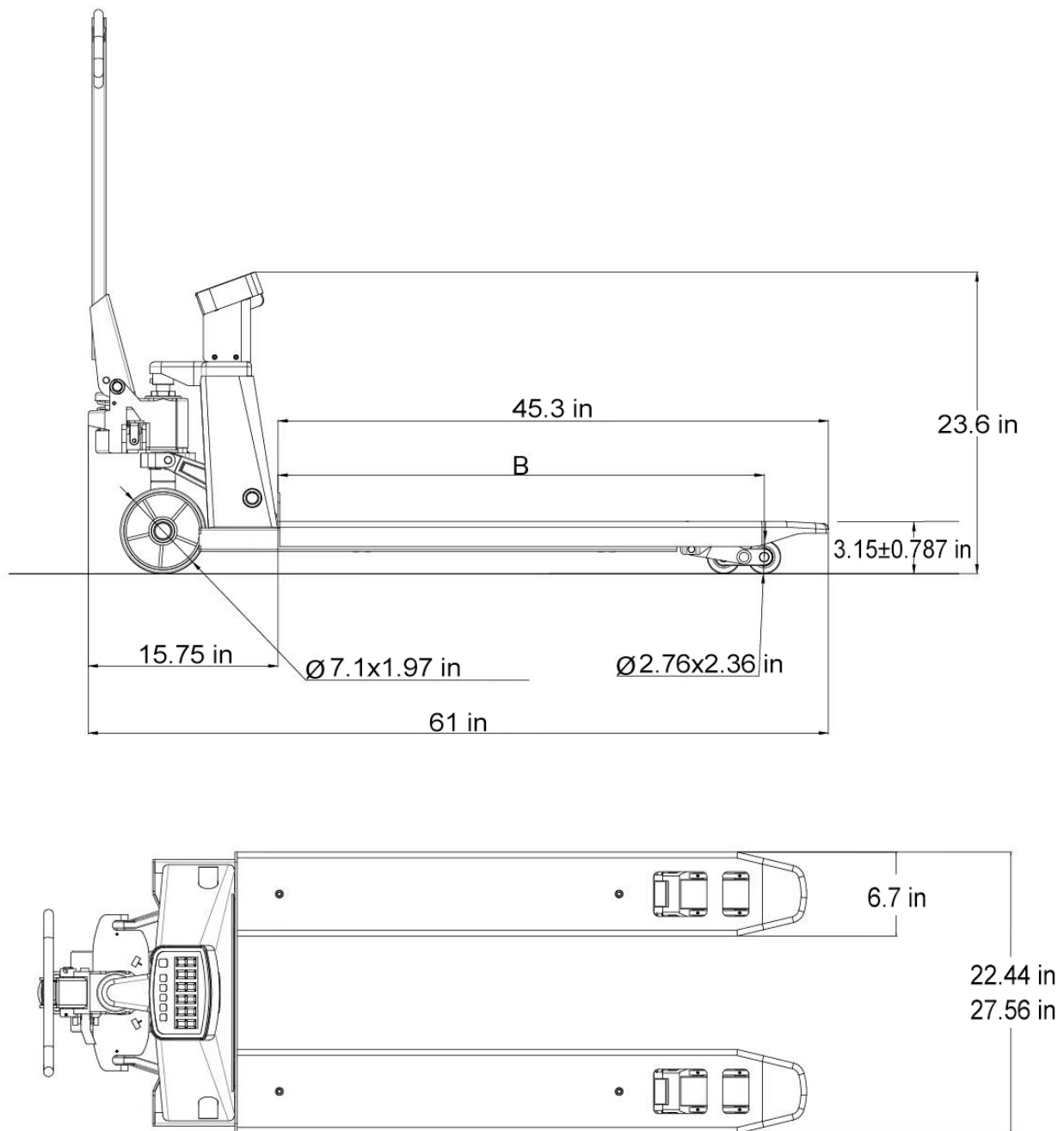
2.  
connect signal wire

3.  
fix the screws of instrument housing

### 4. Handle installation



# 5. Main technical size



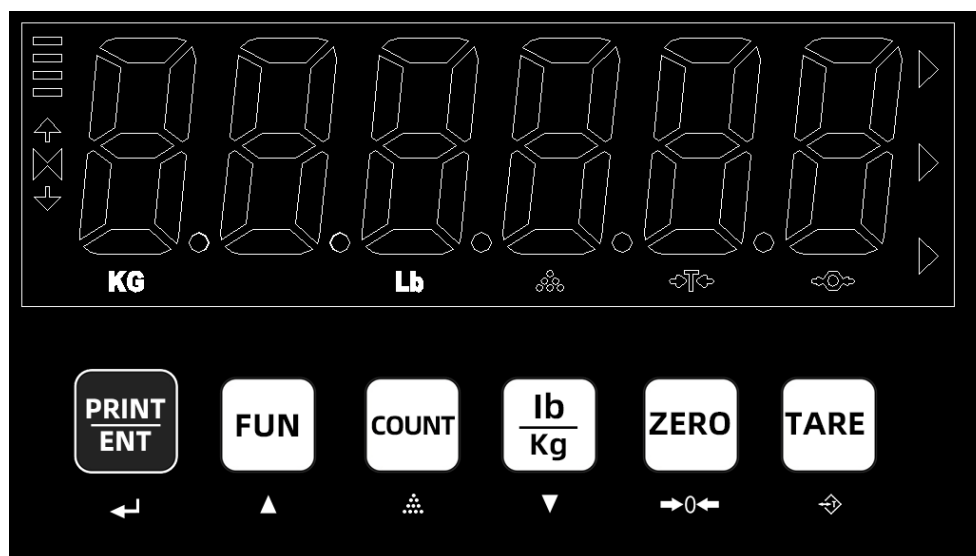
# 6. Main parameters

Capacity	lbs	4400		5500	
Fork width	in	22.44	27.56	22.44	27.56
Fork length	in	45.3			
Min. height of fork	in	3.15±0.787			
Overall Length	in	61			

Weight	lbs	Nylon 200/PU205	Nylon 205/PU215	Nylon 207/PU218	Nylon 231.5/PU242.5
--------	-----	-----------------	-----------------	-----------------	---------------------

## 7. Instruction of screen panel and buttons

### 7.1 Screen panel



### 7.2 Instruction of buttons

- TARE: used to deduct the weight of the container on the scale
- ZERO: confirm it is measured on the zero point
- COUNT: used for quantity sampling in counting function
- LB/KG: used to select weight counting unit
- FUN: used for mode shift and function selection
- PRINT/ENT: used to confirm the data printing and mode

## 8. Operation instruction

### 8.1 Peel and Zero

#### 8.1.1 press the TARE to deduct gross weight

Place the empty container on the scale plate.

Press **【TARE】**, it indicates on the net weight position, and the weight shows as zero.

After placing the parts, the weight shown is net weight.

When removing container, it shows negative value, and press **【TARE】** again to zero.

### 8.1.2 ZERO

Press **【ZERO】** before weighing product to ensure the scale is working from zero.

### 8.1.3 LB/KG selection

Press **【lb/kg】** to choose weighing units of kg and Lb.

Each press can circularly display every time.

Press **【lb/kg】** for long term, the units can be selected into the unit shifts.

When pressing **【lb/kg】**, “u1-ON/OFF” will be shown and they can be selected.

U1-ON: unit 1, it is included in the unit shift (unit 1: KG).

U1-OFF: unit 1, it is not included in the unit shift.

Press **【PRINT/ENT】** after selection, and enter the setting of unit 2, it shows “U2-ON/OFF”.

Press **【FUN】** to choose ON and OFF. Now the unit 2 is g.

Press **【PRINT/ENT】** after selection, and enter the setting of unit 3, it shows “U3-ON/OFF”.

Press **【FUN】** to choose ON and OFF. Now the unit 3 is Lb.

Press **【PRINT/ENT】** after selection. If only one unit is shown, then exit.

When multiple units are shown, it displays “def-u1”, meaning the default unit of machine running is U1. And press **【FUN】** to shift units. Press **【PRINT/ENT】** to exit.

### 8.1.4 Press count button to count

Make samples first (10, 20, 50, 100, any weights are available, and the more samples, the more accurate it is). After calculation, put them on the plate by one time and then press

**【COUNT】**. The screen panel will circularly indicate 10, 20, 50, 100. Press **【COUNT】** again when knowing it is the same with the quantity of samples, meaning it indicates the actual quantity of sampling. At this time, it indicates the counting and the quantity setting is finished. If more parts are needed to put, the quantity can be weighed quickly.

When finishing the counting function, press **【COUNT】** again to withdraw from counting.

### 8.1.5 Function selection button

After power on self test, press **【FUN】** for a long term to enter the function selection:

OFF mode: turn off the other function mode (in case by error operation)

Dny mode: dynamic measuring mode

Hold mode: peak retention mode

Alar mode: upper and lower limit mode

LP50 mode: selection mode of LP50 printing format

### 8.1.6 DNY mode

Press **【FUN】** for long term to enter setting, when it displays "2 dny", press

**【PRINT/ENT】** to enter the dynamic measuring mode. Under this mode, interference can be eliminated better and more stably, and dynamic data can be measured, which is often used in functions such as weighing animals.

Other button functions are not affected.

In this mode, press **【FUN】** once to turn it on. Press again to turn it off.

When the dynamic measurement is stable, the buzzer gives a short sound, indicating that the measurement is stable.

Below two modes can be selected in the parameter setting:

1, L= XX The dynamic change weight does not exceed (XX) KG range and will not be updated.

2, LOC: Locking mode, Dynamic weight is locked after stabilization.

### 8.1.7 Hold mode

Press the **【FUN】** for long term to enter the setting, press the FUN to switch, and when "3 hold" is displayed, press the **【PRINT/ENT】** to confirm entering the peak retention mode.

Other button functions are not affected.

In this mode, press **【FUN】** once, and the upper peak retention mark on the display will light up, which means it is turned on.

Press again to turn it off. In the situation of turning on, record the peak value of the measured weight and keep it. When the value is not greater than the reserved value in the subsequent measurement, the reserved value is still displayed. When the subsequent measured value exceeds the current peak value, replace it.

### 8.1.8 Alar mode

Press the **【FUN】** for a long term to enter the setting, press the **【FUN】** to switch, and when "4 alar" is displayed, press the **【PRINT/ENT】** to confirm entering the upper and lower limit mode. Other button functions are not affected.

After pressing the **【FUN】** to enter the setting, the **【PRINT/ENT】** can be shifted, and the

**【FUN】** can adjust the current value:

When the lower limit is displayed, the lower limit value can be set. Press the **【FUN】** to enter the setting, and the **【PRINT/ENT】** can be shifted, and shifting to the end is to confirm the weight.

After setting the lower limit value, press **【PRINT/ENT】**. When the upper limit is displayed, you can set the upper limit value. After setting the upper and lower limits, you will automatically enter the mode.

The system can set the upper and lower limit internal alarm and upper and lower limit external alarm.

### 8.1.9 LP50 mode

Press the **【FUN】** for long term to enter the setting, and press the **【FUN】**. When "5 LP50" is displayed, press the **【PRINT/ENT】** to enter the LP50 print format selection mode.

Then press **【FUN】** again, and the screen will display "no. XXX". XXX corresponds to the pre-stored table of the printer. Press **【FUN】** to select digits 0-9, and **【PRINT/ENT】** to shift.

After confirming the mode, press **【PRINT/ENT】** to print.

Below is the parameter setting table

display	meaning	setting scope
F1-diu	Index value setting	XX-XX is double precision, and the values are the respective upper and lower half range precision. XX is single precision.
F2-pnt	Decimal digit setting	select by pressing the FUNs
F3-cap	Maximum range setting	The FUN selects the number, the lb/kg zeros, and the print button shifts.
F4-cal	Calibration setting	The value is the number of calibrations.
F5-tra	Zero tracking setting	0-12 unit is the current graduation value
F6-slp	Power saving sleep setting	OFF: turn off 10-90S setting
F7-led	Brightness setting	0, 1, 2, 3, 4, 5, 6, 7; 7 is the most bright
F8-bud	Baud rate setting	1200 , 2400, 4800, 9600, 19200
F9-ode	Communication mode setting	0: no communication                      1: communication by pressing button 2: stable communication                3: continuous communication 4: Command communication            5: warning communication
FA-tpe	Communication protocol setting	0-7 Print protocol selection, covering all formats on the market, 8 Large screen signal output, 9 is LP Print
FB-al0	Interval alarm	0: Within the range 1: out of range 2: no warning



	setting	
FC-al1	Dynamic sensitivity setting	0-15 grade
Fd-dny	Dynamic mode setting	1, L= XX The dynamic change weight does not exceed (XX) KG range and will not be updated. 2, LOC: Locking mode Dynamic weight is locked after stabilization.

## 9. Parameter setting

### 9.1 Setting of index value

Turn on the switch. When the scale is in the process of "00000-999999" self inspection, quickly input the "three times TARE" (the input must be completed before reaching the weighing state), **[F1-diu]** is showed, **power off display and restart after setting, and return to the weighing state.**

step	button operation	display	explanation and operation
1		<b>F1-diu</b>	
2	Press printing confirmation	<b>1</b>	press the FUN, and press the PRINT/ENT after selecting index value
3	Press printing confirmation	<b>2</b>	press the FUN, and press the PRINT/ENT after selecting index value
4	Press printing confirmation	<b>5</b>	press the FUN, and press the PRINT/ENT after selecting index value
5	Press printing confirmation	<b>10</b>	press the FUN, and press the PRINT/ENT after selecting index value
6	Press printing confirmation	<b>20</b>	press the FUN, and press the PRINT/ENT after selecting index value
7	Press printing confirmation	<b>50</b>	press the FUN, and press the PRINT/ENT after selecting index value
		<b>F1-diu</b>	Return to main menu, and enter the next level to set FUNs. <b>No enter into new setting and restart after powering off, and return to the weighing state.</b>

### 9.2 Maximum range setting

step	button operation	display	explanation and operation
1		<b>F3-cap</b>	
2	Press printing confirmation	030.000	Press printing to confirm the shift, and press the FUN to select the number
3	Press printing confirmation	030.000	Press printing to confirm the shift. Press the FUN once to select a number and start again and again

4	Press printing confirmation	040.000	After selecting the number, press printing to confirm until <b>F3 cap is displayed to return to the main menu</b>
5	Press printing confirmation	<b>F3-cap</b>	Return to the main menu, enter the next level to set <b>FUNs, do not enter the new setting, turn off and restart, and return to the weighing state</b>

### 9.3 Calibration setting

step	button operation	display	explanation and operation
1		F4-cal	
2	Press printing confirmation	CAL 1	
3	Press printing confirmation	Put1 0-9 rolling	put on the counterweight
4	Press printing confirmation	030.000 or any digits	Input the weight of the counterweight (press the print confirmation button to shift, press the FUN to select the number) and select the weight
5	confirm by continuous printing	Counterweight weight	Move to the end to confirm the weight, press the print confirmation to return to the weighing state, and the calibration is completed

### 9.4 Zero tracking setting

step	button operation	display	explanation and operation
1		F5-tra	
2	Press printing confirmation	1.5	Press the FUN to select, 0.0~12.0. Press the FUN 0.5 every time. The factory default is 1.5. Press the print confirmation button after selection
3	Press printing confirmation	F5-tra	Return to the main menu, enter the next level to set the FUN. <b>Do not enter the new setting, shut down and restart, and return to the weighing state</b>

### 9.5 Power saving sleep setting

step	button operation	display	explanation and operation
1		F6-slp	
2	Press printing confirmation	0	The FUN 0 is off and 1 is on. After selection, press the print confirmation button to return to the main menu
3	Press printing confirmation	F6-slp	Return to the main menu, enter the next level to set FUN, <b>do not enter the new setting, shut down and restart, and return to the weighing state</b>

### 9.6 Brightness setting

step	button operation	display	explanation and operation
1		<b>F7-led</b>	

2	Press printing confirmation	<b>7</b>	Press the FUN to select 0~7, and level 7 is the brightest. Press the print confirmation button to return to the main menu after selection
3	Press printing confirmation	<b>F7-led</b>	Return to the main menu, enter the next level to set the FUN, <b>do not enter the new setting, shut down and restart, and return to the weighing state</b>

## 9.7 Baud rate setting

step	button operation	display	explanation and operation
1		<b>F8-bud</b>	
2	Press printing confirmation	<b>9600</b>	Press the FUN to select. Each time when press the FUN, 1200.2400.4800.9600.19200 will be displayed in turn. The factory default is 9600. Press printing confirmation after selection
3	Press printing confirmation	<b>F8-bud</b>	Return to the main menu, enter the next level to set the FUN, <b>do not enter the new setting, shut down and restart, and return to the weighing state</b>

## 9.8 Communication mode setting

step	button operation	display	explanation and operation
1		<b>F9-ode</b>	
2	Press printing confirmation	3	0.1.2.3.4.5 The factory default is 3. Press the FUN to select, and 0.1.2.3.4.5 will be displayed in turn every time the FUN is pressed
3	Press FUN	0	No communication, press the print confirmation button to return to the main menu after selecting
4	Press FUN	1	communication by pressing button, press the print confirmation button to return to the main menu after selecting
5	Press FUN	2	stable communication, press the print confirmation button to return to the main menu after selecting
6	Press FUN	3	continuous communication, press the print confirmation button to return to the main menu after selecting
7	Press FUN	4	command communication, press the print confirmation button to return to the main menu after selecting
8	Press FUN	5	warning communication, press the print confirmation button to return to the main menu after selecting
9	Press printing confirmation	<b>F9-ode</b>	Return to the main menu, enter the next level to set the FUN, <b>do not enter the new setting, shut down and restart, and return to the weighing state</b>

## 9.9 Communication protocol setting

step	button operation	display	explanation and operation
1		<b>FA-tpe</b>	

2	Press printing confirmation	0	Printing and communication protocol selection, 0-7 (see Appendix 2 for each protocol value), factory default is 0, press the FUN to select, press the print confirmation button after selection to return to the main menu
3	Press printing confirmation	FA-tpe	Return to the main menu, enter the next level to set the FUN, <b>do not enter the new setting, shut down and restart, and return to the weighing state</b>

## 9.10 Interval alarm setting

step	button operation	display	explanation and operation
1		FB-AL 0	Press the FUN to select, and press the PRINT/ENT to confirm (see Appendix 3 Operating Instructions)
2	Press printing confirmation	0	0-within range, 1-out of range, 2-no alarm
3	Press FUN	1	out of range
4	Press FUN	2	no warning
5	Press printing confirmation	FB-AL 0	Return to the main menu, enter the next level to set the FUN, <b>do not enter the new setting, shut down and restart, and return to the weighing state</b>

## 9.11 Section Warning Communication Setting

The system can realize the functions of warning, communication and printing inside and outside the section.

Long press the **【FUN】** to enter the setting, press the **【FUN】** to switch. When "4 alar" is displayed, press the **【PRINT/ENT】** to confirm entering the upper and lower limit mode. Other button functions are not affected.

After pressing the **【FUN】** to enter the setting, the **【PRINT/ENT】** can be shifted, and the **【FUN】** can adjust the current value:

When the lower limit is displayed, the lower limit value can be set. Press the **【FUN】** to enter the setting, and the **【PRINT/ENT】** can be shifted, and shifting to the end is to confirm the weight.

After setting the lower limit value, press **【PRINT/ENT】**. When the upper limit is displayed, you can set the upper limit value. After setting the upper and lower limits, you will automatically enter the mode.

The system can set the upper and lower limit internal warning and upper and lower limit external alarm.

In the parameter setting:

F9-ode	setting of communication method	0: no communication 2: stable communication 4: command communication	1: communication by pressing buttons 3: continuous communication 5: warning communication
FA-tpe	setting of communication protocol	0-9, Print protocol selection, covering all formats on the market 9 is LP printing	
FB-al0	setting of range warning	0: within the range	1: out of range    2: no warning
FC-al1	setting of range warning	0: warn immediately	1: stable warning

09-ode Select 5 warning communication

FA-tpe Select the print and communication protocol

FB-al0 Select internal and external alarm and no alarm

FC-al1 Select stable warning and immediate warning

## 10. Dynamic Sensitivity Setting

step	button operation	display	explanation and operation
1		FC-AL 1	
2	Press PRINT/ENT	0	press the FUN to select, the factory default is 0, 0 is the maximum, 15 is the minimum, press print to confirm Level 0-15
3	Press PRINT/ENT	FC-AL 1	Return to the main menu, enter the next level to set the FUN, <b>do not enter the new setting, shut down and restart, and return to the weighing state</b>

### 10.1 Dynamic Mode Setting

step	Press FUN	display	explanation and operation
1		Fd-dny	Activate dynamic mode (see Appendix 4 Settings)
2	Press PRINT/ENT	L=0.002	Each time the FUN is pressed, L=0.001-0.014 is displayed in turn, and the value is taken from the index value
3	Press FUN	LOC	Locking mode: when the dynamic weight is stable, it will be locked. After selection, press the print confirmation button to return to the main menu
4	Press PRINT/ENT	Fd-dny	Return to the main menu, enter the next level to set the FUN, <b>do not enter the new setting, shut down and restart, and return to the weighing state</b>

### 10.2 Dynamic Mode Activation Settings

Under weighing status, long press the **【FUN】** to enter the setting. When "2 dny" is displayed, press the **【PRINT/ENT】** to enter the dynamic measurement mode. In this mode, interference can be eliminated better and more stably, and dynamic data can be measured, which is often used in functions such as weighing animals.

Other button functions are not affected.

In this mode, press **【FUN】** once to turn it on. Press again to turn it off.

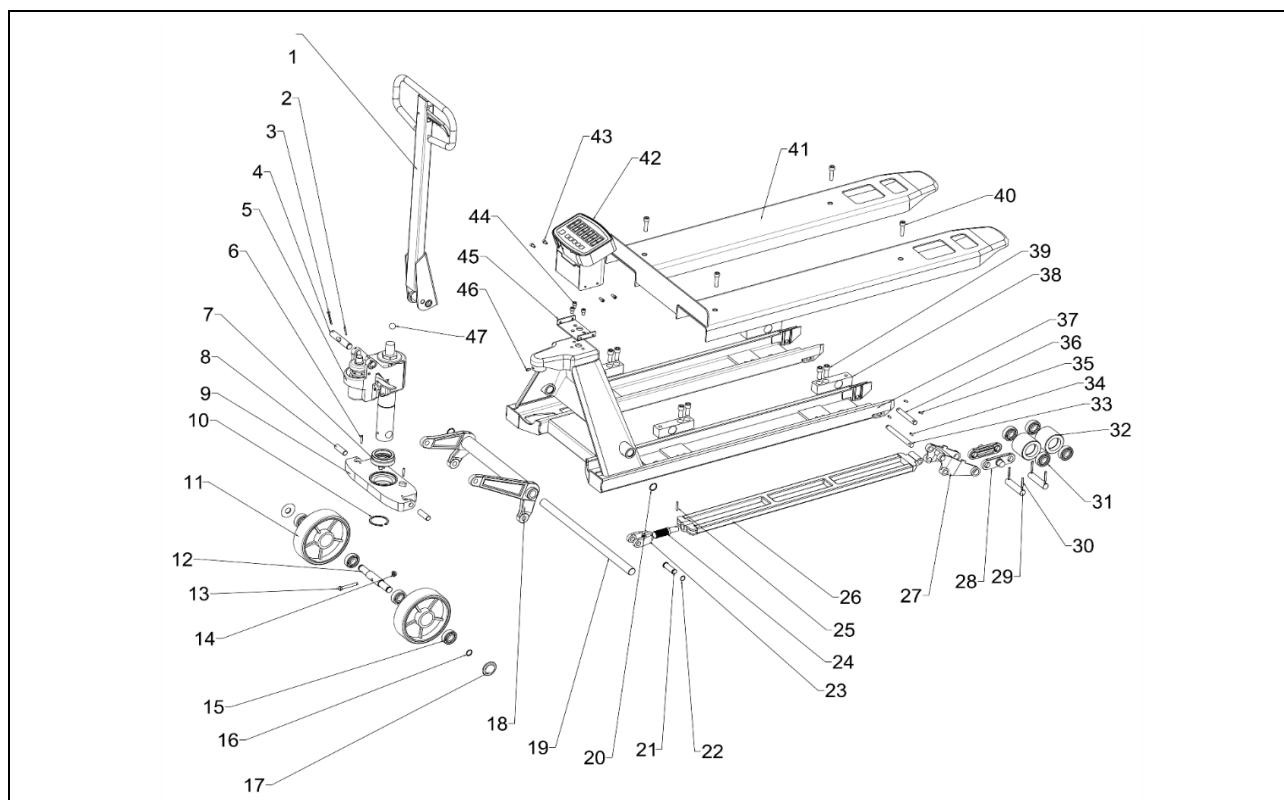
When the dynamic measurement is stable, the buzzer gives a short sound, indicating that the measurement is stable.

The following two modes can be selected in parameter setting:

1, L= XX The dynamic change weight does not exceed (XX) KG range and will not be updated.

2, LOC: Locking mode Dynamic weight is locked after stabilization.

## 11. Spare Parts Drawing



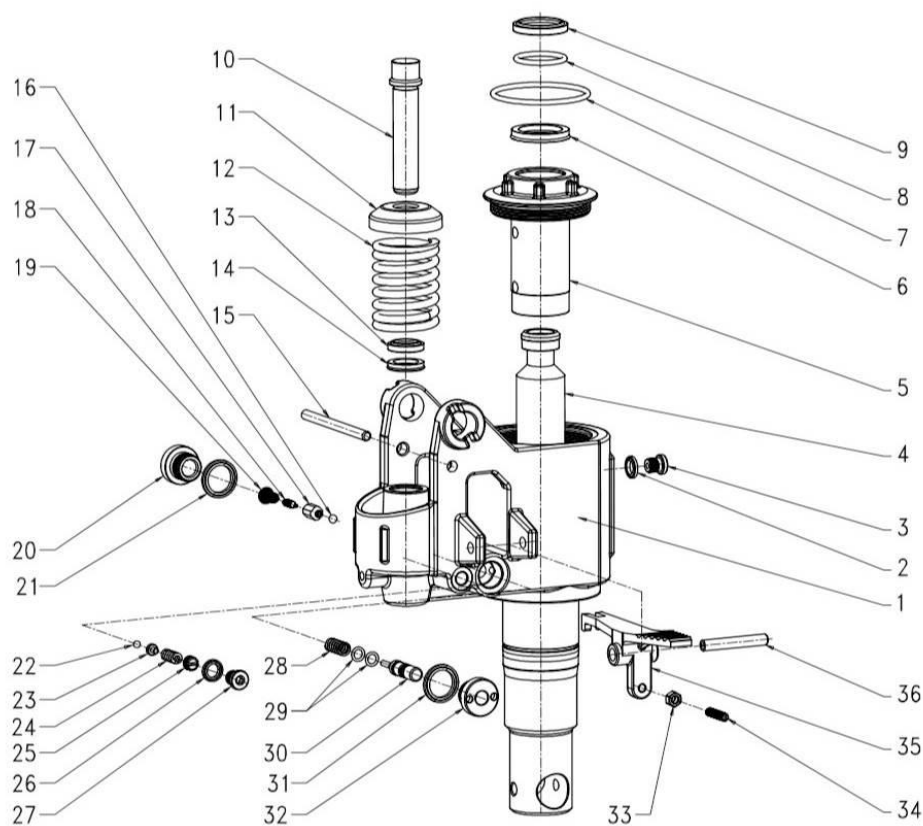
NO	Description	Qty	NO	Description	Qty
1	operation handle	1	25	elastic pin	5*30mm/2
2	elastic pin	5*32 / 1	26	push rod	2
3	opening pin	4*50 / 1	27	wheel frame	2
4	handle shaft	1	28	double plate	4
5	oil pump assembly	1	29	bearing wheel axle	4
6	elastic pin	5*32 / 1	30	elastic pin	5*35mm/8
7	plain bearing	51111	31	bearing of load bearing wheel	8
8	fixed shaft of support seat		32	load bearing wheel	4
9	support base	4	33	fixed shaft of wheel frame	2
10	circlip	55 / 1	34	elastic pin	5*20mm/4
11	steering wheel	180*50 / 2	35	push rod fixed shaft	2
12	fixed shaft of big wheel	1	36	elastic pin	5*20mm/4
13	fixing screws of large axle	1	37	frame	1
14	fixing nut of large axle	1	38	sensor	4

15	bearing of large axle	4	39	sensor fixing screws	12*30mm/8
16	shaft circlip	2	40	fixing screws of weighing plate	10*30mm/4
17	bearing cover	2	41	weighing plate	1
18	rocker arm	1	42	gauge assembly	1
19	long shaft of rocker arm	1	43	socket head cap screw	6*15mm/4
20	hole circlip	2	44	socket head cap screw	10*20mm/3
21	connector fixed shaft	2	45	instrument holder	1
22	retaining ring for fixed shaft	2	46	socket head cap screw	6*12mm/1
23	connector	2	47	steel ball	19mm
24	connector screw rod	2			

## Display

Common instrument assembly			optional printer instrument assembly		
NO	Description	Qty	NO	Description	Qty
1	instrument	1	1	instrument	1
2	instrument cover	1	2	instrument cover	1
3	charging base	1	3	charging base	1
4	switch	1	4	switch	1
5	screw of charging screw	2	5	screw of charging screw	2
6	battery	1	6	battery	1
7	battery cover	1	7	battery cover	1
8	screw of cover	1	8	screw of cover	1

## Oil cylinder



NO	Description	Qty	NO	Description	Qty
1	cylinder	1	19	pagoda spring	1/φ0.7*20
2	combined washer	1/φ10*2	20	screw plug	1/M20*1.5*12
3	screw	1/M10*1*9.5	21	combined washer	1/φ20*2
4	piston rod	1/φ35*263	22	steel ball	1/φ5
5	cross sliding sleeve	1/φ35	23	steel ball washer	1/φ8*8
6	seal ring	1/UHSφ35*43*7	24	safety valve spring	1/φ2*8*16.5
7	O ring	1/φ65*2.65	25	adjusting screw	1/M10*1*8.5
8	O ring	1/φ34.5*3.55	26	combined washer	1/φ10*2
9	dust ring	1/DHS35*43*5/6.5	27	screw	1/M10*1*9.5
10	small pump core	1/φ18*98	28	firing pin spring	1/1.3*9.5*22
11	large spring cap	1/φ49*2*15	29	O ring	2/6.9*1.8
12	large spring	1/φ5.5*48*115	30	firing pin	1/φ10*52
13	dust ring	1/DHS18*26*4.5/6	31	combined washer	1/φ20*2
14	dust ring	1/UHS18*26*5	32	firing pin base	1/M20*1.5*1.8
15	technological rod	1/φ7*95	33	nut	1/M6*1
16	steel ball	1/φ6.35	34	thread rod	1/M6*1*25
17	valve body	1/φ4.9*11	35	3 # lever plate	1
18	valve core	1/φ4.8*19	36	spring pin	1/φ8*50



