

EKKO[®]

MATERIAL HANDLING EQUIPMENT.

MOVING AHEAD

LITHIUM WALKIE STRADDLE STACKER EB16EAS-189Li

- 4400 lbs. Capacity
- 189 in. Lift Height
- **SIDE-SHIFT**
- Free Lift 51.85 In.
- EPS (Electric Power Steering)
- 24V Center AC Drive Motor
- Turning Radius 68.5"
- Works in a 8.5 ft aisle
- Adjustable Legs 38.06-51.81 in.
- Adjustable Forks 8.27-31.5 in.
- Curtis Instrument Controller
- Batteries and Charger Included
- 3 Year Limited Warranty



EB16EAS-189Li

Superior quality, maneuverable, compact, and durable for all your material handling applications. Ideal for compact spaces.

WEIGHT CAPACITY: 4400 lbs. @ 24" load center

LIFT HEIGHT: 189" (15.75 ft.)

FREE LIFT: 51.85"

FORK LENGTH: 45.3"

ADJUSTABLE OUTRIGGERS: 38.06-51.81"

ADJUSTABLE FORKS: 8.27-31.5"

MAST HEIGHT: 88.86"

TURNING RADIUS: 68.5"

BATTERY / CHARGER: Lithium 24V-150Ah Battery with 24V-50A Charger

SIDE-SHIFT: 4.7"

LIFTING SPEED: : 5.35 IPS empty; 3.6 IPS loaded

LOWERING SPEED: 3.85 IPS empty; 4.4 IPS loaded

DRIVE WHEELS: : 9" x 3" polyurethane

LOAD WHEELS: (2) 4" x 3" polyurethane per outrigger

EPS (Electric Power Steering)

HYDRAULICS LIFTING MOTOR: 24V 3000-Watt lifting motor with hardened chrome moly steel for durability.

DRIVE MOTOR: 24V AC Drive Motor

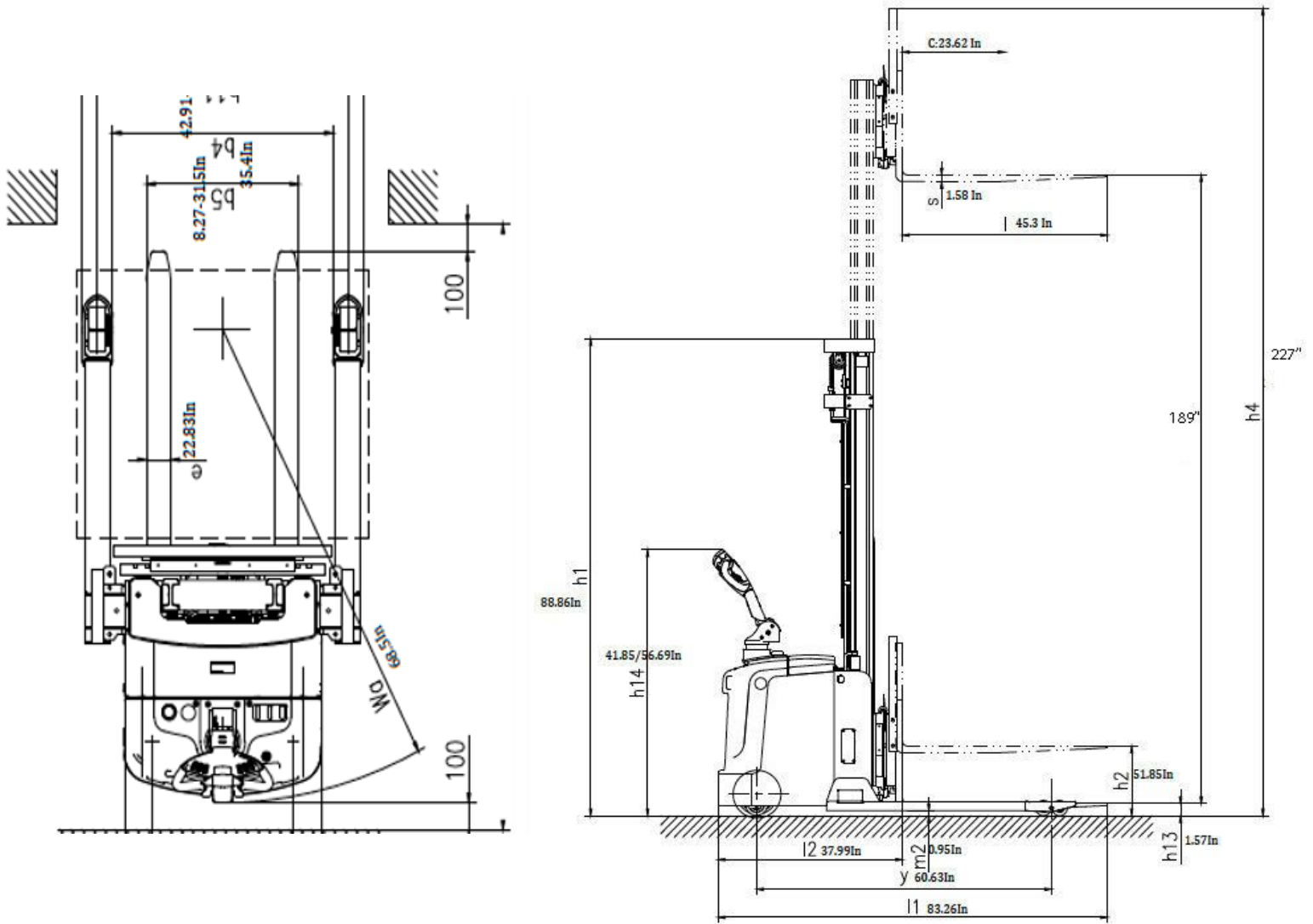
AC CONTROLLER: 24V CURTIS Instrument provides performance through entire range of speed; Constant travel speed regardless of load; Battery discharge indicator combination gauge.

OPERATOR CONTROLS: Throttle, lifting, lowering, turtle mode and horn functions are in the ergonomic handle; Offset steering handle to provide better visibility; Belly button reverse safety feature allows the unit to stop and reverse to avoid collision or injury.

CHASSIS AND MAST: Robotic Welding; Heavy duty steel chassis with I-beam mast for durability; Telescoping mast includes a protective steel guard.



LITHIUM STRADDLE STACKER **EKKO**®



| MODEL # | MAST | LIFT HEIGHT | MAX MAST HEIGHT | SERVICE WEIGHT |
|---------------|--------|-------------|-----------------|----------------|
| EB16EAS-189Li | 88.86" | 189" | 227" | 3520 Lbs. |