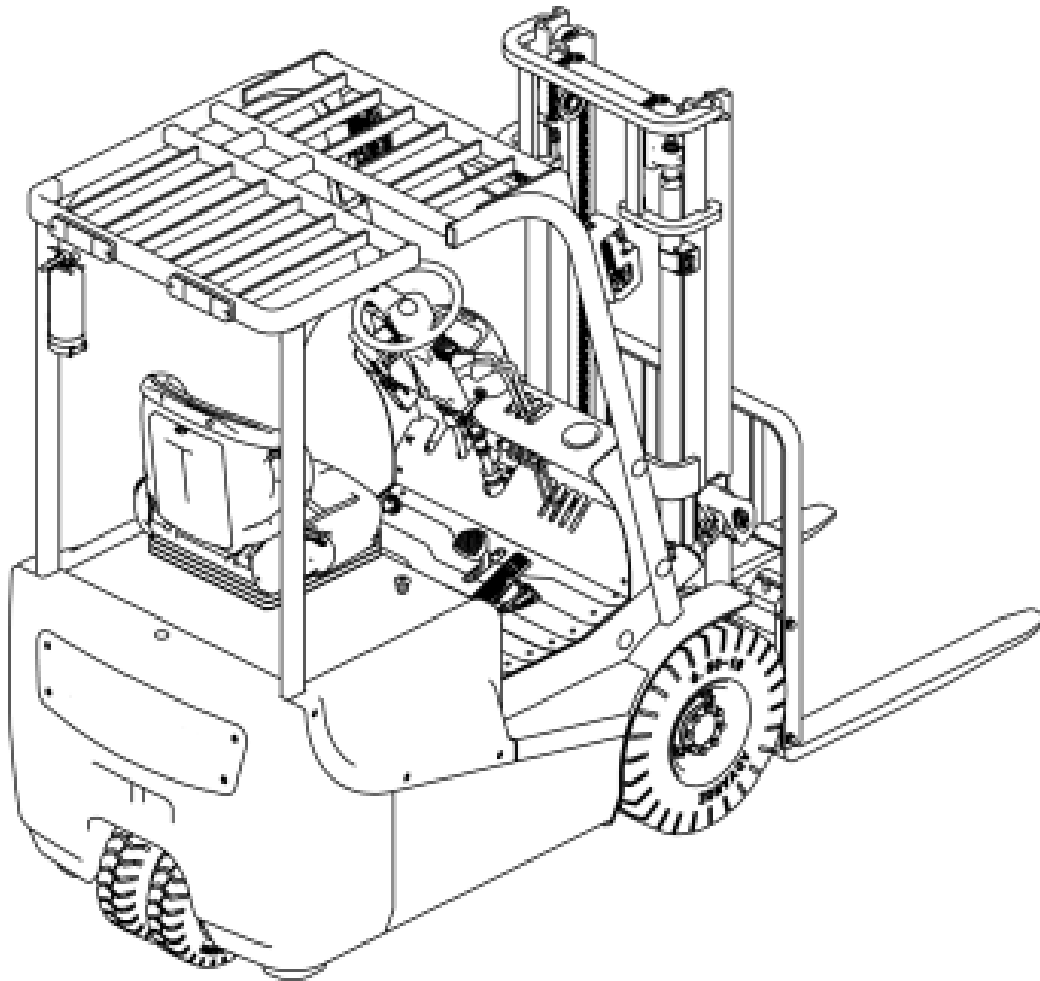


PART LIST

Counter balanced Electric forklift

EK18A



Content

1.Bodywork system

1.1MAIN FRAME SYSTEM.....	1
1.2OVERHEAD GUARD ASSEMBLY.....	3
1.3FRONT COVER.....	5
1.4REAR COVER.....	7

2.Operating system

2.1OPERATING SYSTEM.....	9
2.2FOOT BRAKE.....	11
2.3STEERING EQUIPMENT	13

3.Driving system

3.1DRIVE AXLE ASSEMBLY.....	15
3.2GEARBOX.....	17
3.3DIFFERENTIAL MECHANISM.....	19

4.Steering system

4.1STEERING AXLE ASSEMBLY.....	21
4.2STEERING ASSEMBLY	23

5.Electrical System

5.1ELECTRICAL SYSTEM.....	25
5.2ELECTRONIC CONTROL ASSEMBLY.....	27

6.Hydraulic system

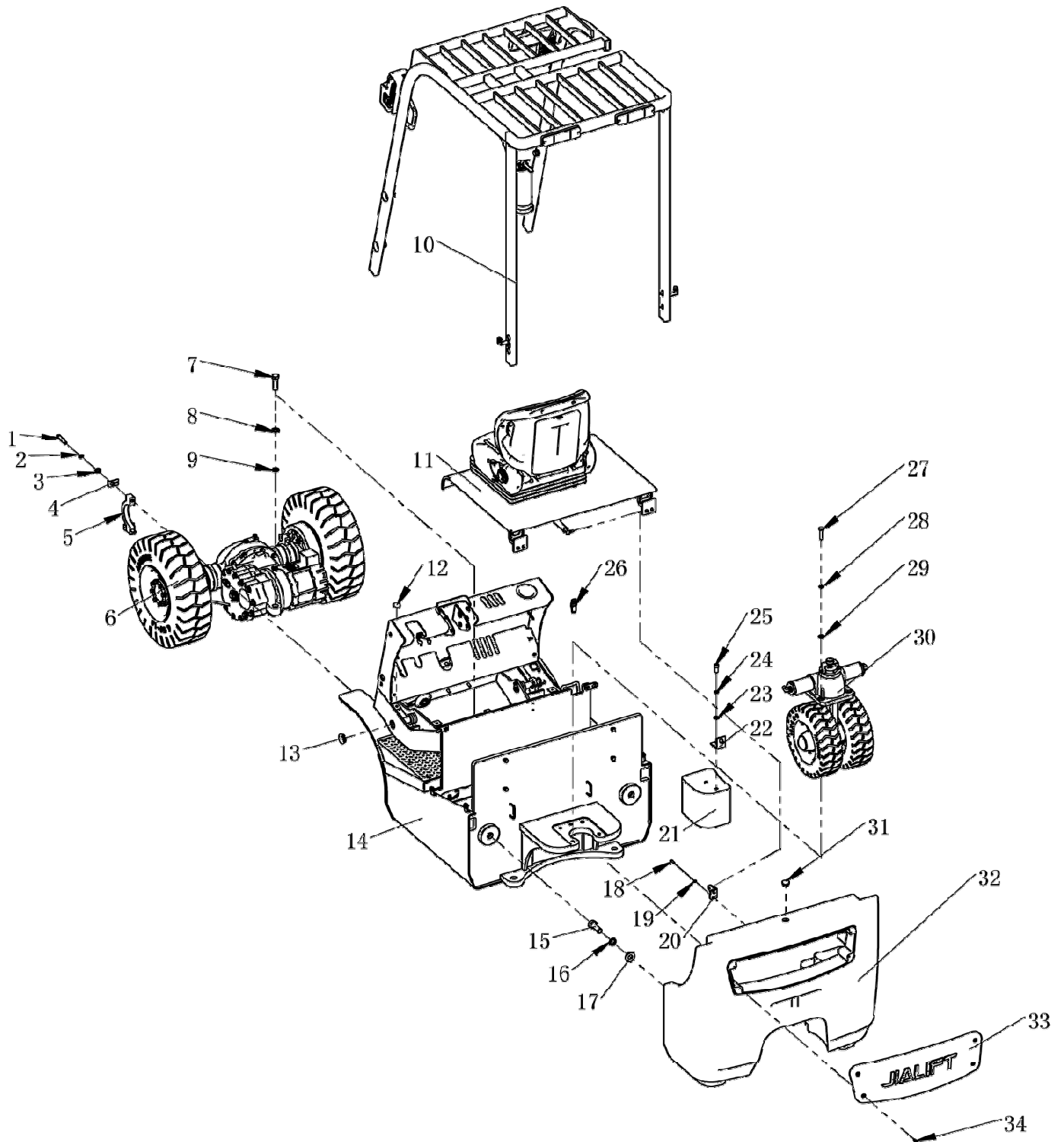
6.1HYDRAULIC LINE I.....	29
6.2HYDRAULIC LINE II.....	31

7.Lifting system

7.1DOOR FRAM ASSEMBLY	33
7.2LIFTING CYLINDER ASSEMBLY	35
7.3TILT CYLINDER ASSEMBLY	37
7.4INNER MAST ASSEMBLY.....	39
7.5INNER MAST ASSEMBLY	41
7.6FORK HOLDER ASSEMBLY	43

1 Bodywork system

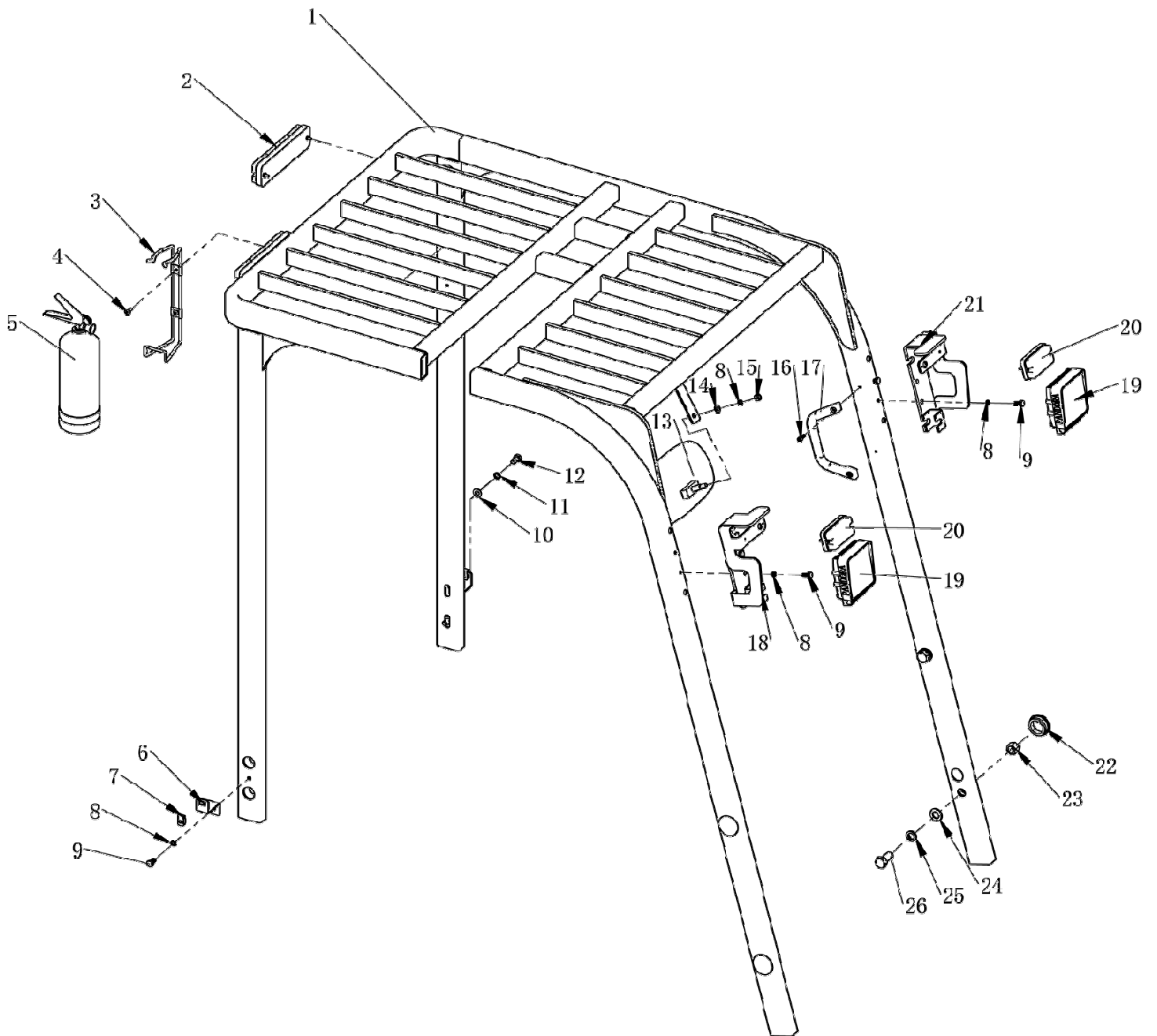
1.1 Main Frame system



1.1 Main Frame system

No.	Code	Description	Specification	QTY	Remark
1	03.03823	Hexagon bolt	M14×75	4	GB/T5782-2000
2	03.0016	Spring washer	Φ14	4	GB/T93-1987
3	03.0045	Flat washer	Φ14	4	GB/T97.1-2002
4	30.25.0059	Bolt clamp		4	
5	30.01.0217	Front axle hoop		2	
6	82.65.0001	Drive axle assembly		1	
7	03.0828	Hexagon bolt	M20×70	1	GB/T5782-2000
8	03.0042	Flat washer	Φ20	1	GB/T95-2002
9	03.0018	Spring washer	Φ20	1	GB/T93-1987
10	82.65.0002	Overhead guard assembly		1	
11	82.65.0003	Battery cover assembly		1	
12	30.24.0005	Rubber mat		4	
13	02.01.2239	Rubber plug	Φ41.3	8	
14	33.052.0001	Main frame welded		1	
15	03.0803	Hexagon bolts full thread	M24×70	4	GB/T5783-2000
16	03.0020	Spring washer	Φ24	4	GB/T93-1987
17	03.0006	Big washer	Φ24	4	GB/T96.1-2002
18	03.0807	Hexagon bolts full thread	M8×25	2	GB/T5783-2000
19	03.0012	Spring washer	Φ8	2	GB/T 93-1987
20	30.98.031	Gas spring support		1	
21	30.65.0001	Auxiliary counterweight		2	One on each side
22	30.01.08803	Fixed angle iron		2	
23	03.0044	Flat washer	Φ12	4	GB/T 95-2002
24	03.0015	Spring washer	Φ12	4	GB/T 93-1987
25	03.0171	Hexagon socket head cap screws	M12×30	4	GB/T70.1-2000
26	19.0433	No.2 Flat mouth buckle	5103B	1	
27	03.0394	Hexagon bolts full thread	M16×55	5	GB/T5783-2000
28	03.0017	Spring washer	Φ16	5	GB/T 93-1987
29	03.0047	Flat washer	Φ16	5	GB/T 95-2002
30	82.65.0004	Steering axle assembly		1	
31	02.01.2127	Shock absorbers		1	
32	30.98.032	Rear Counterweight		1	
33	02.FGJ.2385	Rear Counterweight Cover		1	
34	03.02393	Large flat head cross screw	M6×16	4	GB 973-1976

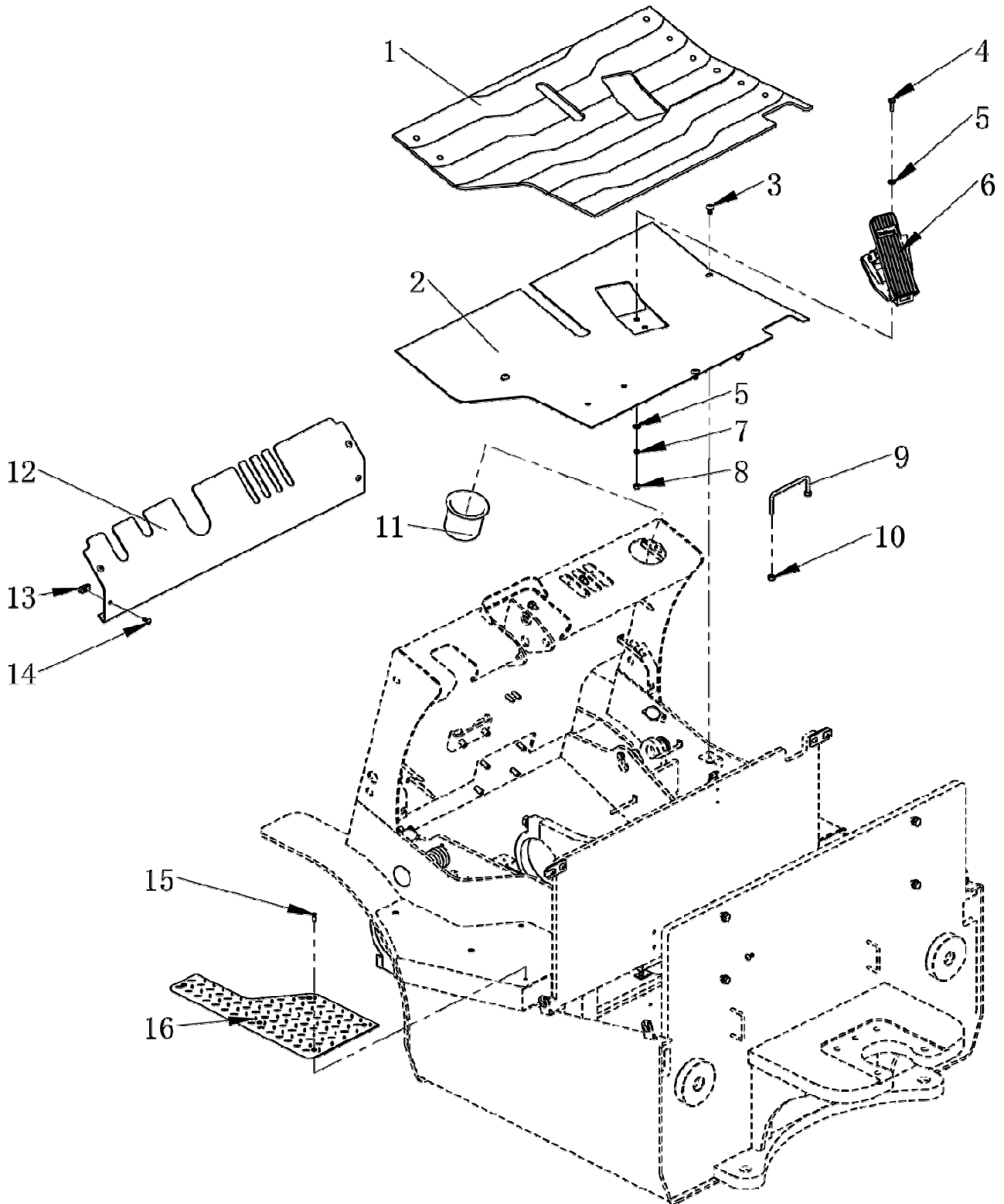
1.2 Overhead guard assembly



1.2 Overhead guard assembly

No.	Code	Description	Specification	QTY	Remark
1	33.052.0002	Overhead guard welded		1	
2	19.03343	Rear light	PDL-LXHW-02	2	
3	02.01.32982	Fire extinguisher holder		1	
4	03.0228	Cross recessed pan head screw	M6×16	2	GB/T818-2000
5	02.01.32992	Fire extinguisher		1	
6	30.01.6298	Side cover mounting bracket		2	
7	03.0587	Spring snap nut	M6	2	
8	03.0012	Spring washer	Φ8	7	GB/T93-1987
9	03.0373	Hexagon bolts full thread	M8×16	6	GB/T5783-2000
10	03.0043	Flat washer	Φ10	4	GB/T97.1-2002
11	03.0014	Spring washer	Φ10	4	GB/T93-1987
12	03.0805	Hexagon bolts full thread	M10×25	4	GB/T5783-2000
13	17.0009	Rear view mirror	HS 220×110	1	
14	03.0050	Flat washer	Φ8	1	GB/T97.1-2002
15	03.0258	Hexagon nut	M8	1	GB/T6170-2000
16	03.0147	Hexagon socket head cap screws	M6×16	2	GB/T70.1-2000
17	02.01.3006	Overhead guard gripper		1	
18	33.013.0002	Protective cover welding Right		1	
19	19.0334	Headlight	PDL-AS27-01	2	
20	19.03341	Steering light	PDL-LXXD-01	2	
21	33.013.0002	Protective cover welding Left		1	
22	02.01.2239	Rubber plug	Φ41.3	8	
23	03.0260	Hexagon nut	M16	4	GB/T 41-2000
24	03.0047	Flat washer	Φ16	4	GB/T97.1-2002
25	03.0017	Spring washer	Φ16	4	GB/T93-1987
26	03.0879	Hexagon bolts full thread	M16×35	4	GB/T5783-2000

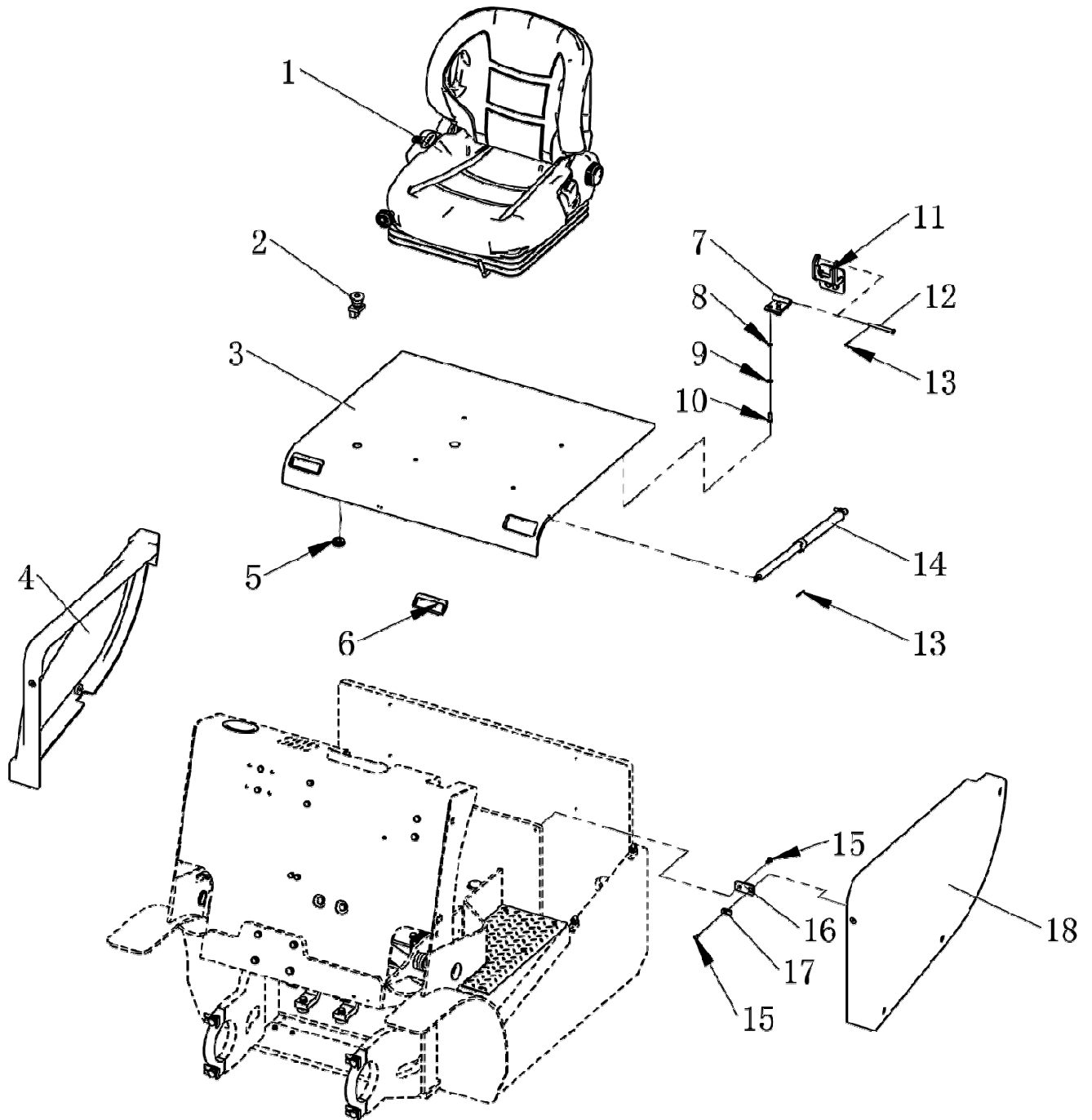
1.3 Front cover



1.3 Front cover

No.	Code	Description	Specification	QTY	Remark
1	02.01.20942	Foot brake pedal pad		1	
2	33.034.0015	Foot brake pedal welded		1	
3	03.0580	Large flat head cross screw	M8×16	3	GB973-1976
4	03.0807	Hexagon bolts full thread	M8×25	2	GB/T5783-2000
5	03.0050	Flat washer	Φ8	4	GB/T97.1-2002
6	02.01.21570	EJ10 Accelerator		1	
7	03.0012	Spring washer	Φ8	4	GB/T 93-1987
8	03.0258	Hexagon nut	M8	2	GB/T6170-2000
9	30.24.0034	Foot brake handle		1	
10	03.0244	Hexagon lock nut	M8	2	GB/T889.1-2000
11	02.FGJ.2381	Cup holder		1	
12	30.01.0637	Pedal front cover		1	
13	03.0587	Spring snap nut	M6	4	
14	03.02393	Large flat head cross screw	M6×16	4	GB 973-1976
15	03.0418	Cross recessed countersunk head screws	M6×16	5	GB/T819.1-2000
16	30.01.0639	Pedal		1	

1.4Rear Cover

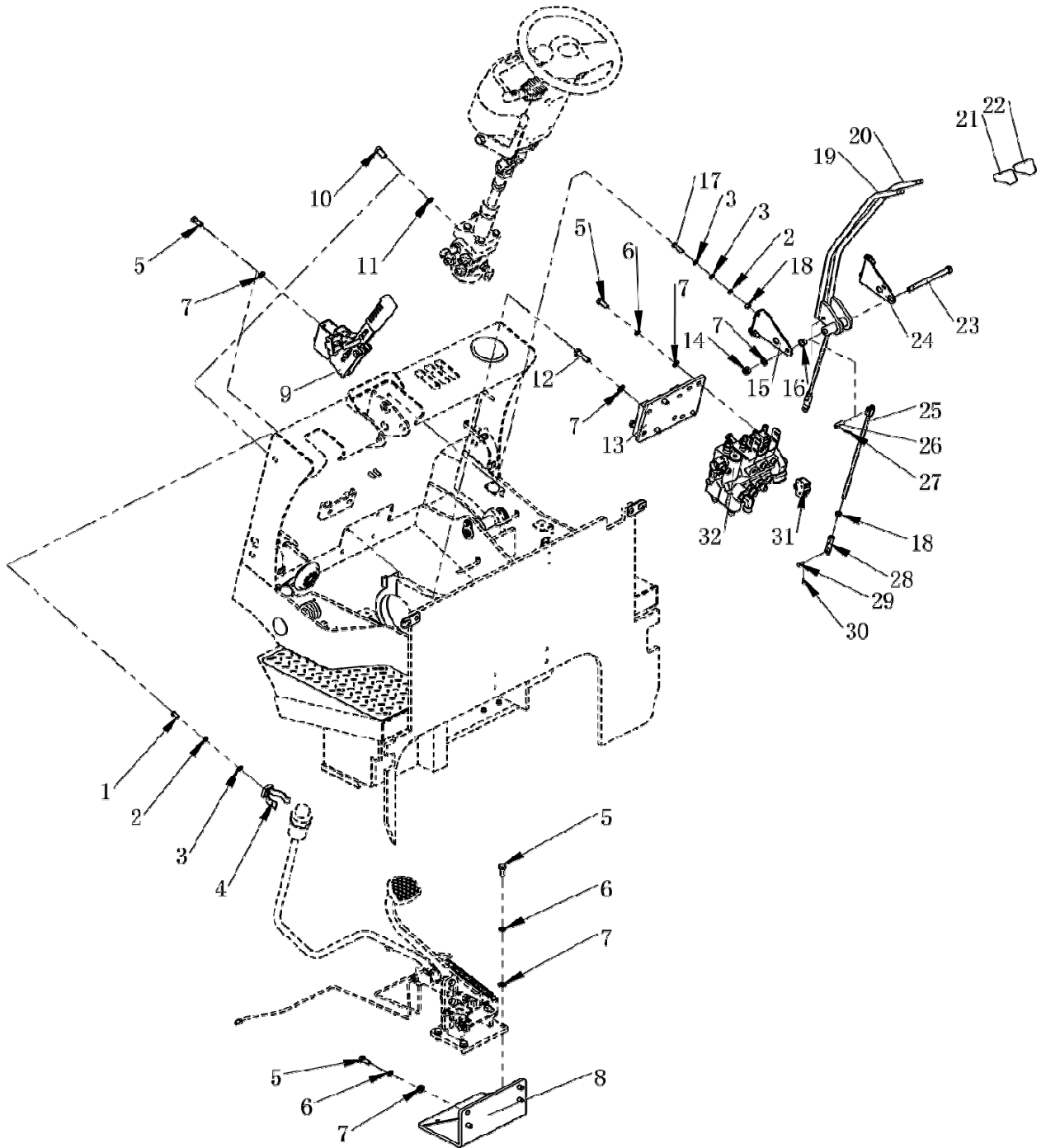


1.4Rear Cover

No.	Code	Description	Specification	QTY	Remark
1	30.25.0266	Seat		1	
2	02.01.2248	Emergency stop switch	ZDK32-350A	1	
3	33.052.0003	Battery cover plate welded		1	
4	02.FGJ.2383	Right cover		1	
5	02.01.2127	Shock absorbers		2	
6	03.0208	Embedded handle		2	
7	33.021.0016	Hinge bottom plate welding		2	
8	03.0012	Spring washer	Φ8	10	GB/T 93-1987
9	03.0050	Flat washer	Φ8	10	GB/T97.1-2002
10	03.0807	Hexagon bolts full thread	M8×25	10	GB/T5783-2000
11	33.021.0017	Hinge rotate plate welding		2	
12	30.25.0092	Hinge shaft		2	
13	03.0333	Cotter pin	2×16	3	GB/T 91-2000
14	02.QTH.3626	Gas spring	800N	1	
15	03.02393	Large flat head cross screw	M6×16	10	GB 973-1976
16	33.052.0003	Cover fixed support plate		2	
17	03.0587	Spring snap nut	M6	6	
18	02.FGJ.2384	Left cover		1	

2 Operating system

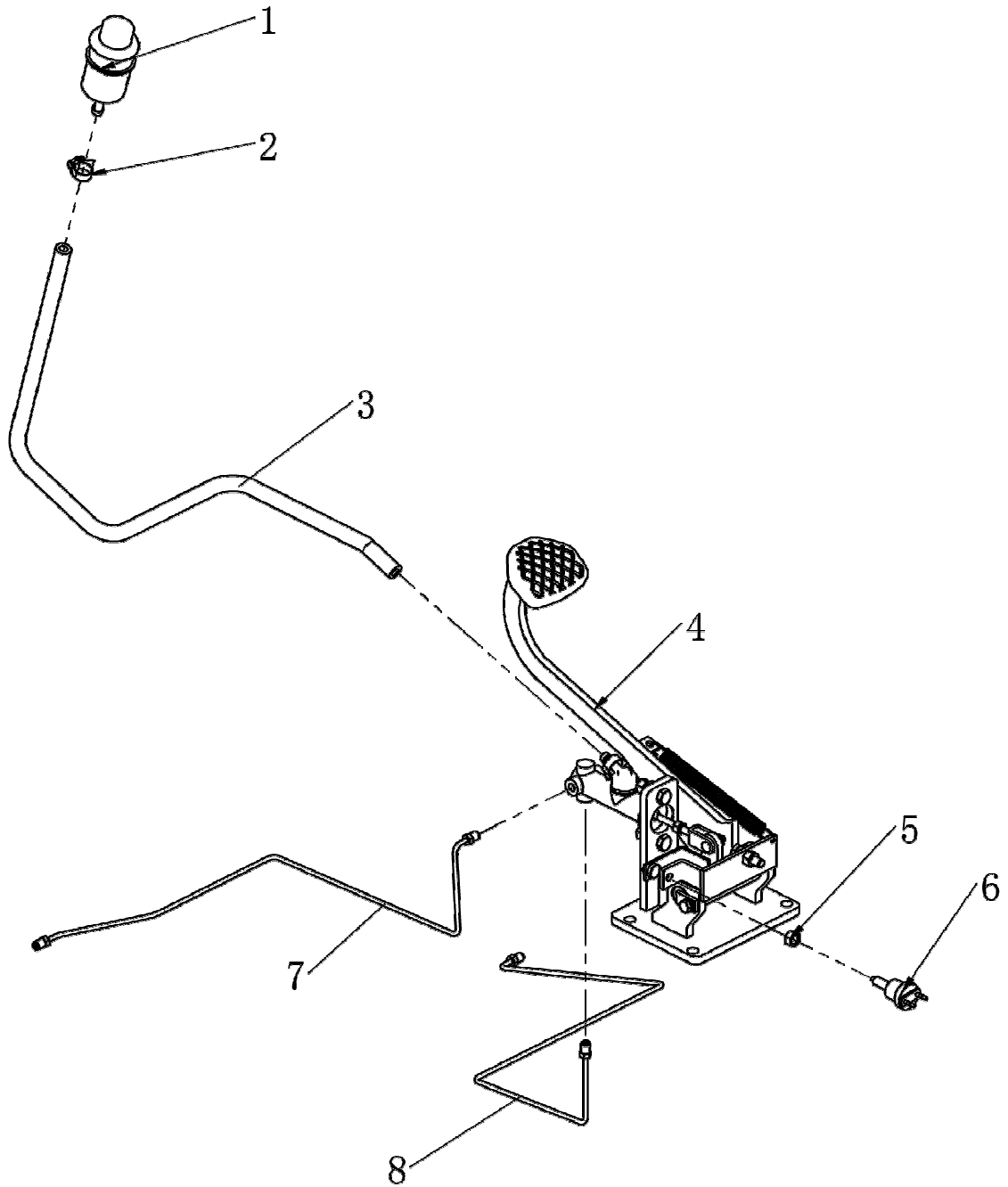
2.1 Operating system



2.1 Operating system

No.	Code	Description	Specification	QTY	Remark
1	03.0373	Hexagon bolts full thread	M8×16	1	GB/T5783-2000
2	03.0012	Spring washer	Φ8	5	GB/T 93-1987
3	03.0050	Flat washer	Φ8	9	GB/T97.1-2002
4	33.021.0013	Oil can hoop welding		1	
5	03.0805	Hexagon bolts full thread	M10×25	14	GB/T5783-2000
6	03.0014	Spring washer	Φ10	12	GB/T 93-1987
7	03.0043	Flat washer	Φ10	19	GB/T97.1-2002
8	33.034.0002	Foot brake seat welding		1	
9	30.25.0007	Hand brake		1	
10	03.0666	Hexagon bolts full thread	M12×25	2	GB/T5783-2000
11	03.0015	Spring washer	Φ12	2	GB/T 93-1987
12	03.0354	Hexagon bolts full thread	M10×40	4	GB/T5783-2000
13	33.034.0019	Multi-way valve mounting plate		1	
14	03.0243	Hexagon lock nut	M10	1	GB/T889.1-2000
15	30.01.0630	Bracket block left		1	
16	03.0761	Composite set with shoulder	Φ20×Φ14×Φ12×10	4	
17	03.0379	Hexagon bolt	M8×30	4	GB/T5781-2000
18	03.0258	Hexagon nut	M8	7	GB/T6170-2000
19	33.034.0016	lifting lever welded		1	
20	33.034.0017	Tilt lever welded		1	
21	02.01.3362	Lifting operation handle		1	
22	02.01.3532	Tilt operation handle		1	
23	30.24.0037	Bracket shaft		1	
24	30.01.0629	Bracket block Right		1	
25	33.034.0020	Connecting rod welding		2	
26	03.0323	Pin shaft	Φ8×30	2	GB 882-86
27	03.0557	Cotter pin	Φ3×20	2	GB/T 91-2000
28	30.01.0212	Connection sleeve		2	
29	30.05.132	Pin shaft	Φ4.8×18	2	
30	03.0343	Cotter pin	Φ2×10	2	GB/T 91-2000
31	02.01.21820	Micro switch	RZ-15GW22S-B3	2	
32	02.DLF.0324	Two-way multi-way valve	MSV04-212-10 L-02	1	

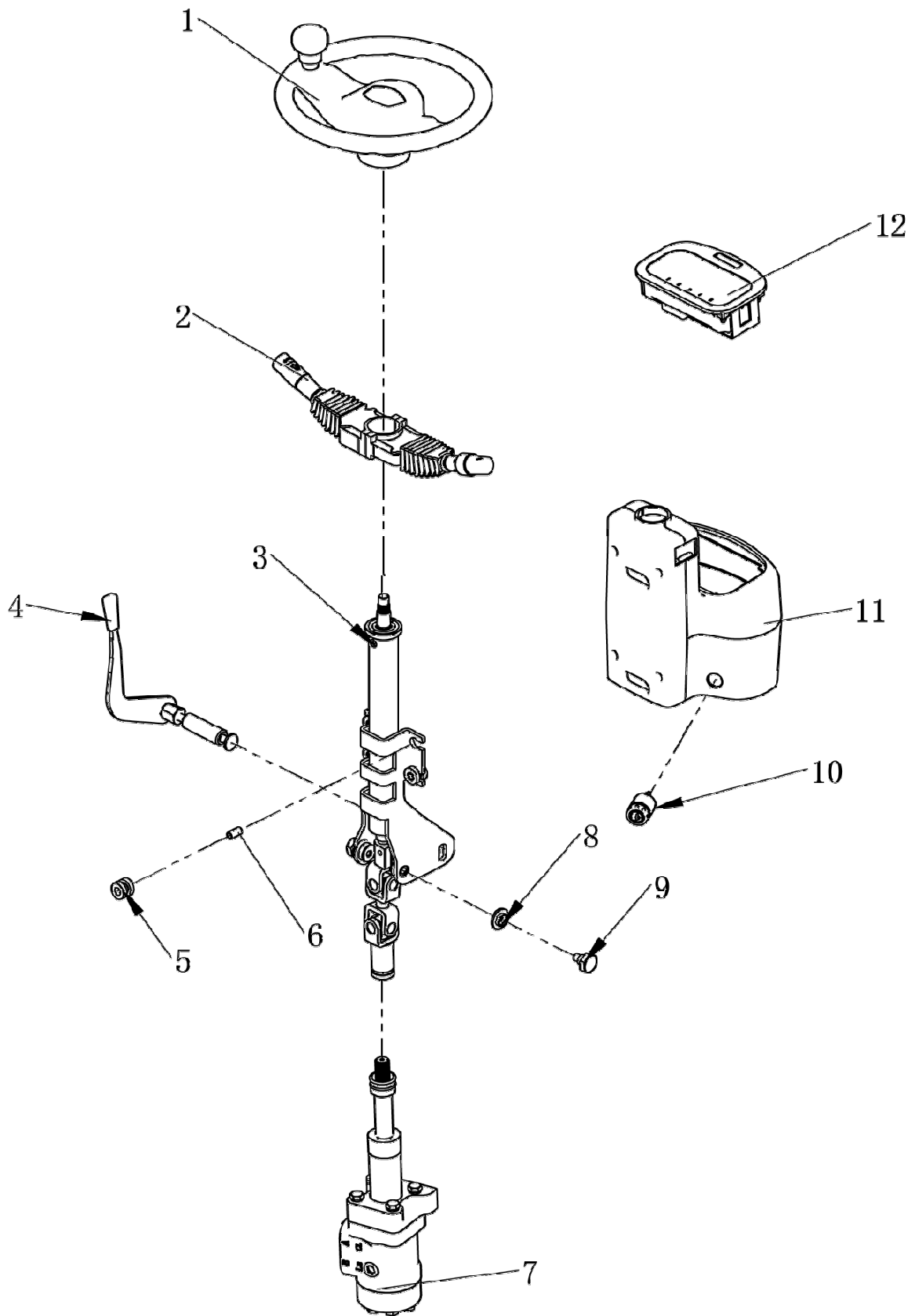
2.2 Foot brake



2.2Foot brake

No.	Code	Description	Specification	QTY	Remark
1	02.01.9069	Single hole oil can		1	
2	03.05385	Tubing hoop	Φ11-20	2	
3	30.25.0267	Oil-resisting rubber hose	Φ10	1	
4	30.25.0008	Foot brake assembly		1	
5	03.0266	Hexagon nut with fine thread	M10	1	GB/T6170-2000
6	02.01.2296	Micro switch	ZG-058	1	
7	02.YYL.2354	Brake hose left		1	
8	02.YYL.2369	Brake hose Right		1	

2.3 Steering equipment

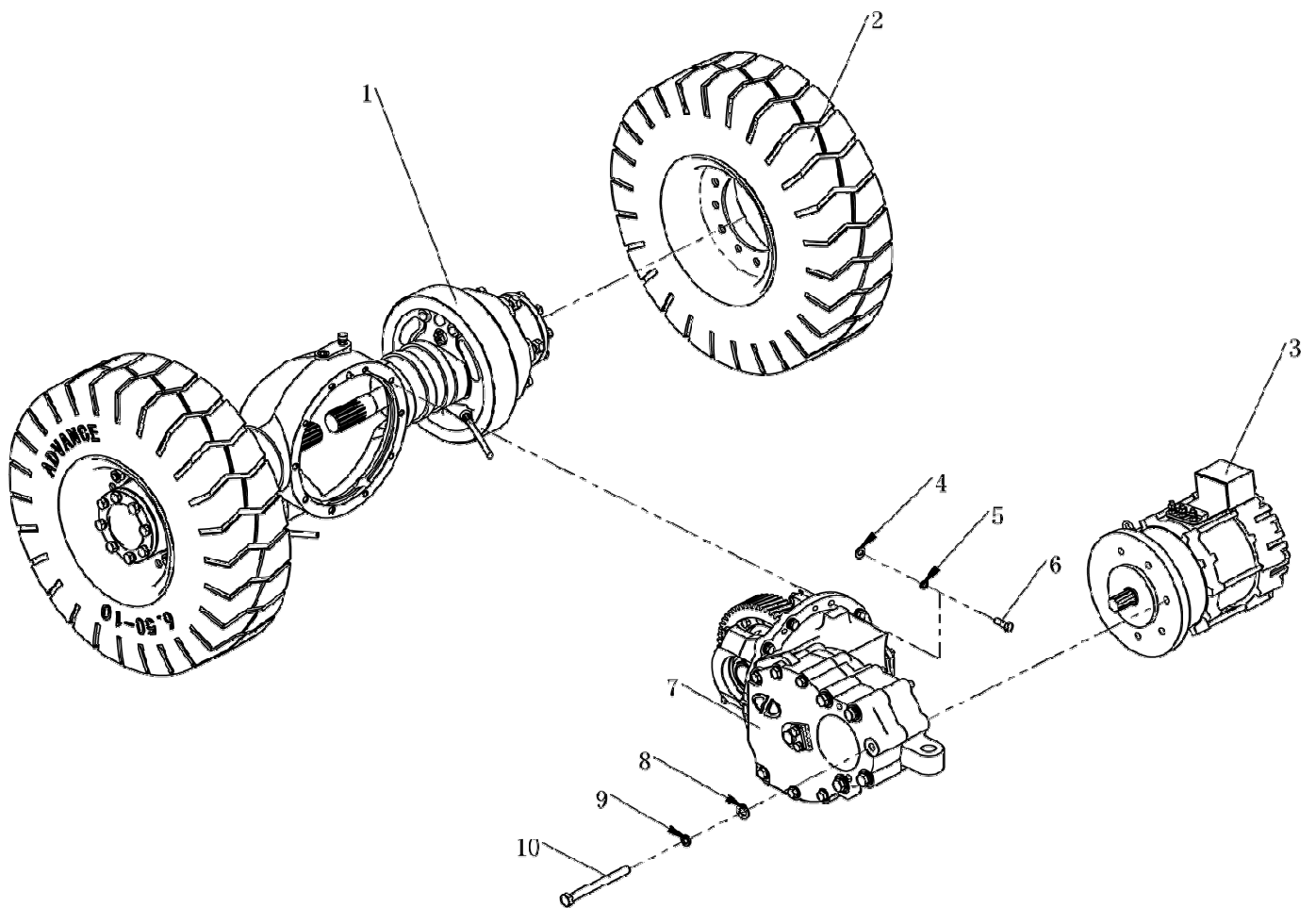


2.3 Steering equipment

No.	Code	Description	Specification	QTY	Remark
1	02.01.3360	Steering wheel	A300-02	1	
2	02.01.3350	Combination Switch	JK803AB	1	
3	30.25.0009	Directional string welding (universal joint 230)		1	
4	02.01.0245	Steering wheel adjustment handle (including locking bolt)	H24C4-10501	1	
5	02.01.9023	Rubber column		4	
6	30.25.0264	Fixed spacer		4	
7	30.25.0011	Full hydraulic steering gear	BZZ5-E125BA-H1	1	
8	30.25.0108	Plastic spacer		2	
9	30.25.0107	Pipe column fixing bolt		2	
10	02.01.2186	Key switch		1	
11	30.01.6507	Instrument case		1	
12	02.DLB.21544	Electricity meter		1	

3 Driving system

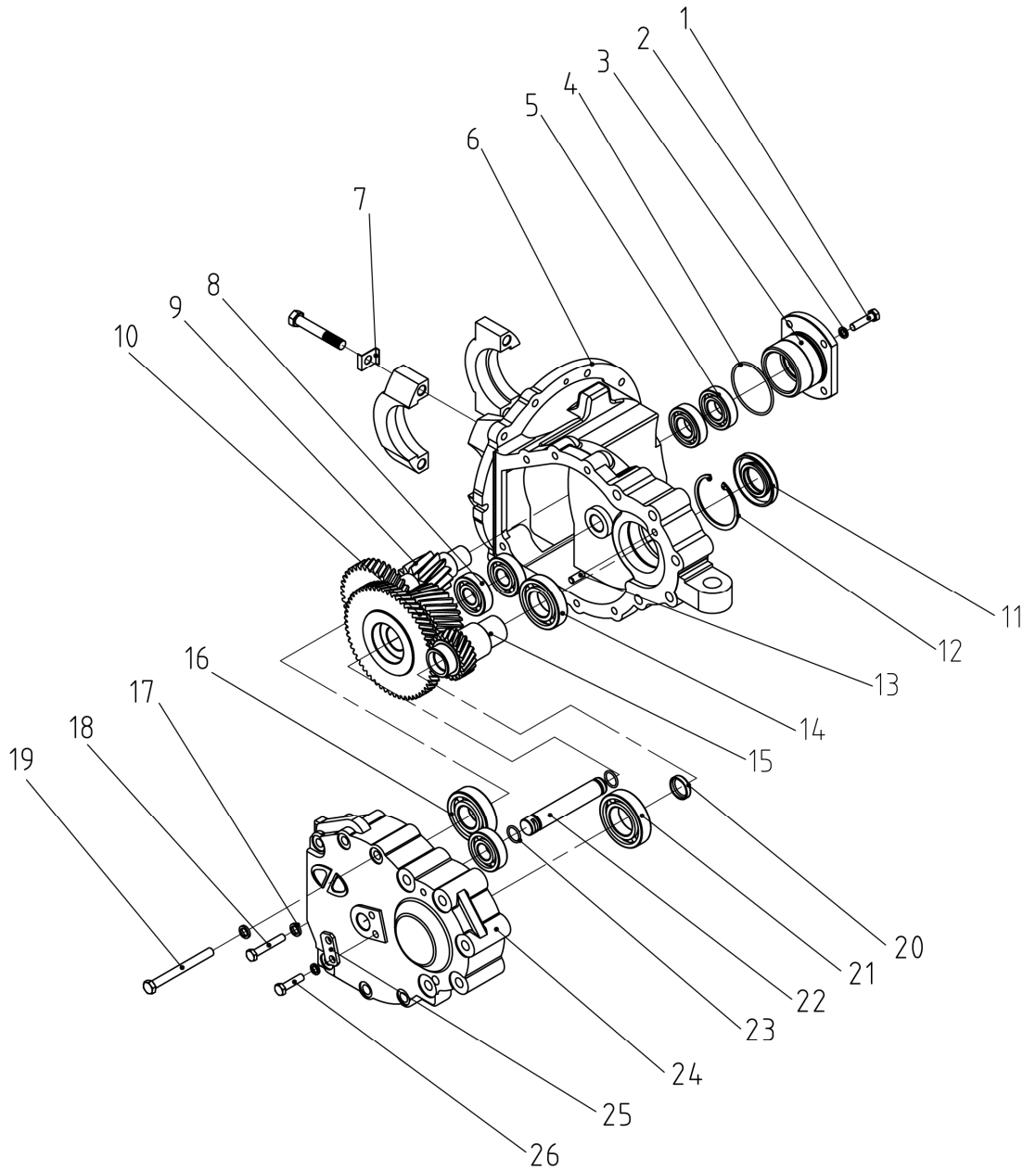
3.1 Drive axle assembly



3.1 Drive axle assembly

No.	Code	Description	Specification	QTY	Remark
1	30.25.0286	H1.5T Drive axle	A65E4-00001	1	
2	02.01.9036	Solid wheel	650-10	2	
3	02.DJ.00836	Driving motor	1R342330	1	
4	03.0043	Flat washer	Φ10	10	GB/T97.1-2002
5	03.0014	Spring washer	Φ10	10	GB/T 93-1987
6	03.0778	Hexagon bolts full thread	M10×30	10	GB/T5783-2000
7	30.25.0287	Gearbox	HDCS20AII	1	
8	03.0045	Flat washer	Φ14	5	GB/T97.1-2002
9	03.0016	Spring washer	Φ14	5	GB/T 93-1987
10	03.0665	Hexagon bolt	M14×155	5	GB/T5782-2000

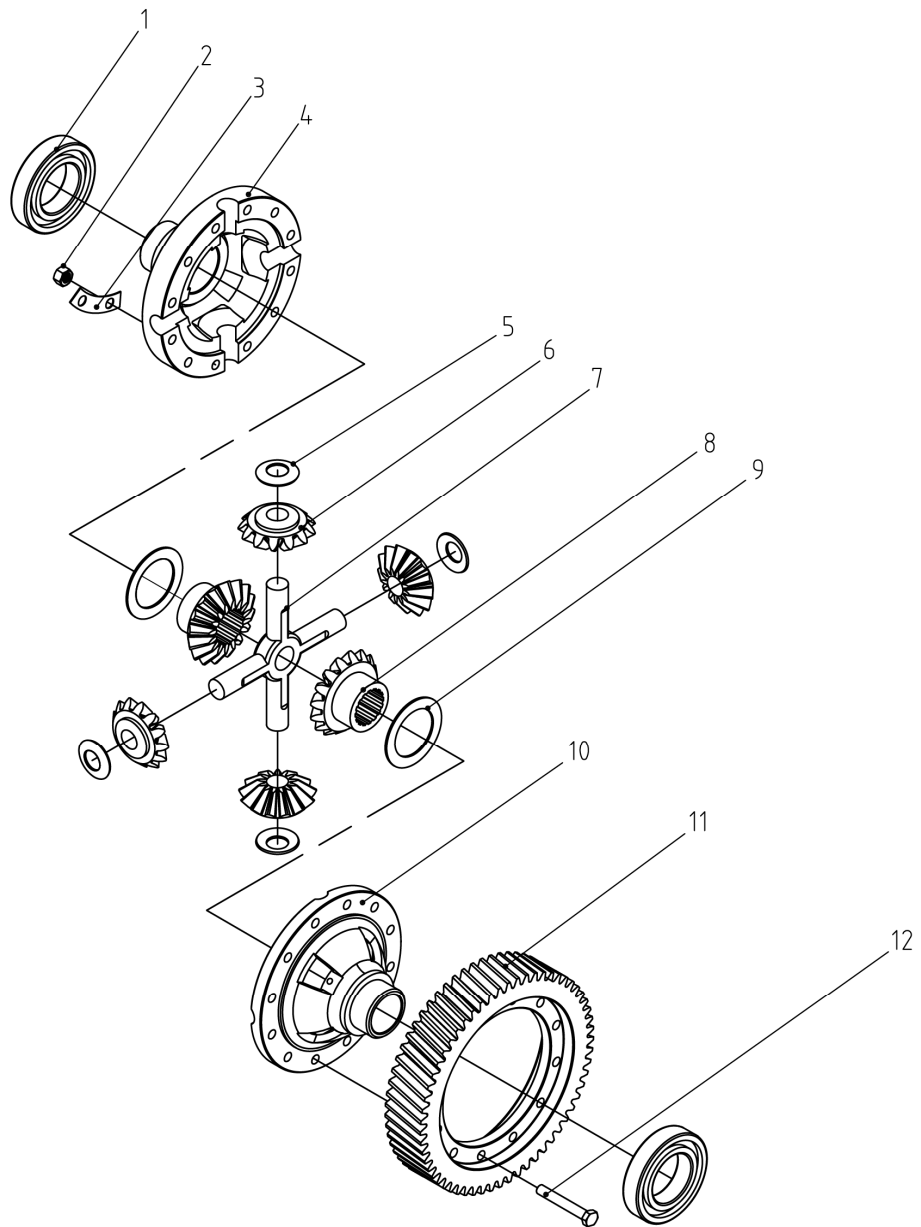
3.2 Gearbox



3.2 Gearbox

No.	Code	Description	Specification	QTY	Remark
1	GB/T 5783	Bolt	M10×25	4	
2	GB/T 93	Spring pad	Φ10	6	
3	HDCS20-01003	Bearing cover		1	
4	GB/T 1235	O shape ring	Φ80×3.1	1	
5	GB/T 276	Deep groove ball bearing	6206	2	
6	HDCS20-01200-1	Box assembly		1	
7	YQX25-01008	Bearing Seat locking plate		4	
8	GB/T 276	Deep groove ball bearing	6305	3	
9	HDCS20-04001	Gear shaft		1	
10	HDCS20-03003-1	Double gear		1	
11	HDCS20-01004	Oil seal	Φ40×Φ80×12	1	
12	GB/T 893.1	Spring washer	Φ80	1	
13	GB/T 119.1	Cylindrical pin	Φ10×22	2	
14	GB/T 276	Deep groove ball bearing	6208	1	
15	HDCS20-02001-1	Input shaft		1	
16	GB/T 276	Deep groove ball bearing	6307	1	
17	GB/T 93	Spring washer	Φ12	11	
18	GB/T 5786	Bolt	M12×1.25×40	2	
19	GB/T 5785	Bolt	M12×1.25×100	9	
20	HDCS25-01002	Seal cover		1	
21	GB/T 276	Deep groove ball bearing	6209	1	
22	HDCS20-03003	Shaft		1	
23	GB/T 1235	O shape ring	Φ25×2.4	2	
24	HDCS20-01002	Box cover		1	
25	HDCS20-03004	Baffle		1	
26	GB/T 5783	Bolt	M10×16	2	

3.3 Differential mechanism

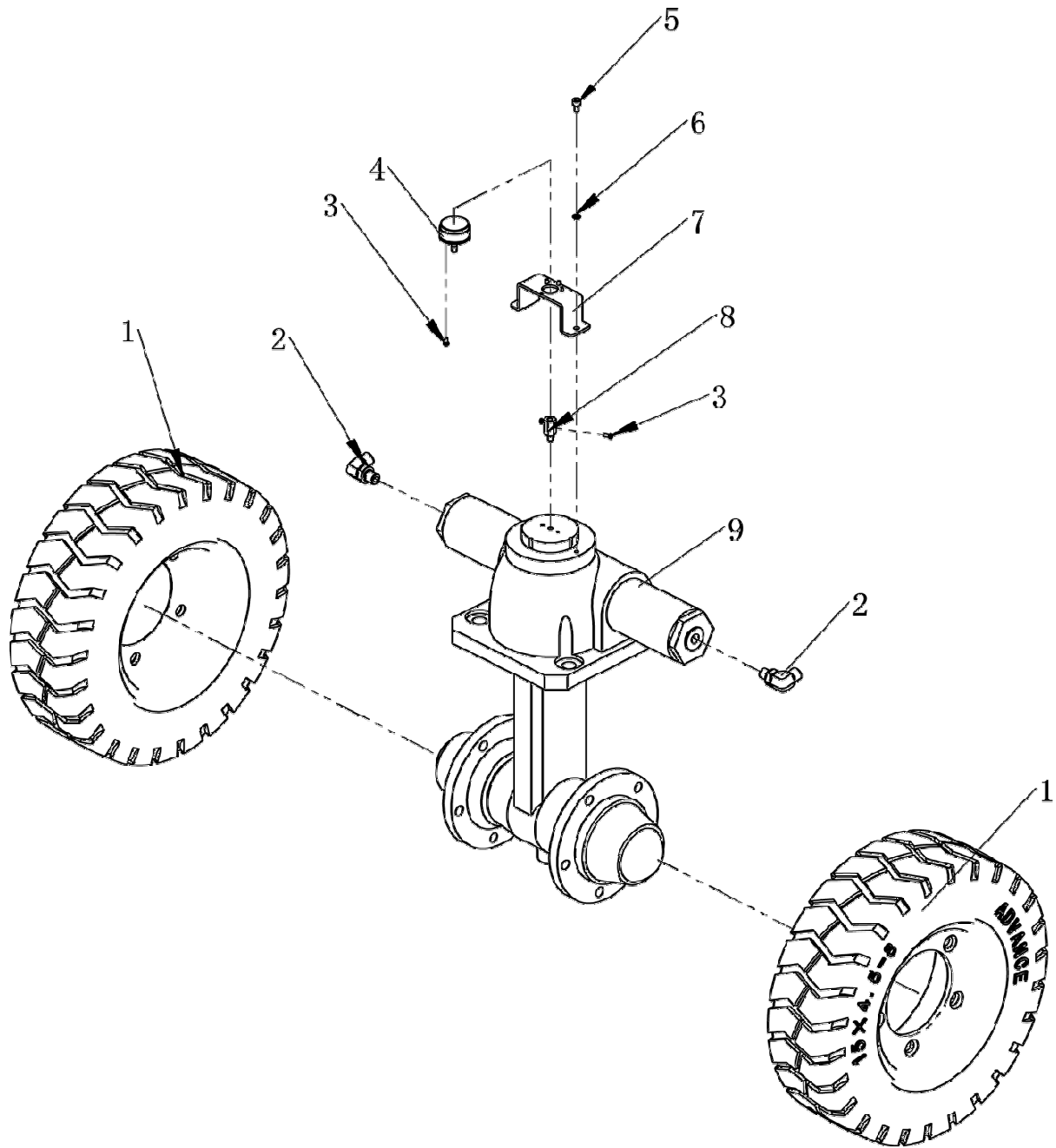


3.3 Differential mechanism

No.	Code	Description	Specification	QTY	Remark
1	GB/T 276	Deep groove ball bearing	6211	2	
2	GB/T 6171	Nut	M10×1.25	12	
3	YQX25-10009	Gear rim lock		6	
4	YQX25-10001	Differential mechanism cover Left		1	
5	YQX25-10004	Planetary washer		4	
6	YQX25-10005	Planetary gear		4	
7	YQX25-10003	Cross shaft		1	
8	YQX25-10007	Axle shaft gear		2	
9	YQX25-10006	Axle shaft Washer		2	
10	YQX25-10002	Differential mechanism cover right		1	
11	HDCS20-05001	Gear ring		1	
12	YQX25-10008A	Gear ring bolt		12	

4 Steering system

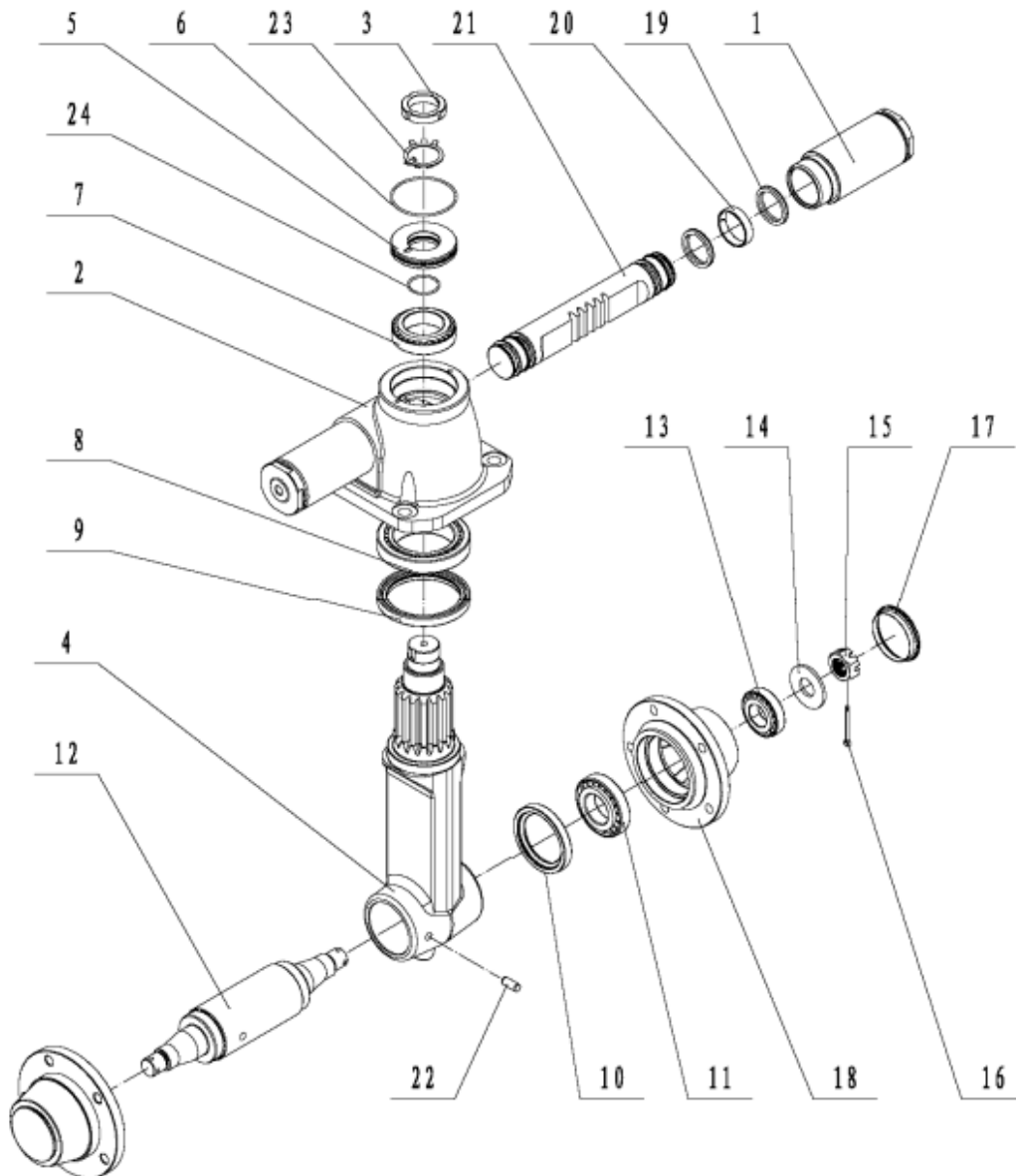
4.1 Steering axle assembly



4.1 Steering axle assembly

No.	Code	Description	Specification	QTY	Remark
1	30.25.0289	Solid wheel	15×4.5-8	2	
2	02.01.32722	Right Angle Connector		2	
3	03.02151	Cross recessed pan head screw	M3×8	6	GB/T 818-2000
4	16.00475	Potentiometer	WDD35D4-5K	1	
5	03.0175	Hexagon socket head cap screws	M6×10	2	GB/T 70.1-2000
6	03.0011	Spring washer	Φ6	2	GB/T 93-1987
7	30.65.0003	Bracket		1	
8	30.65.0004	Connection sleeve		1	
9	30.25.0283	Steering assembly		1	

4.2 Steering assembly

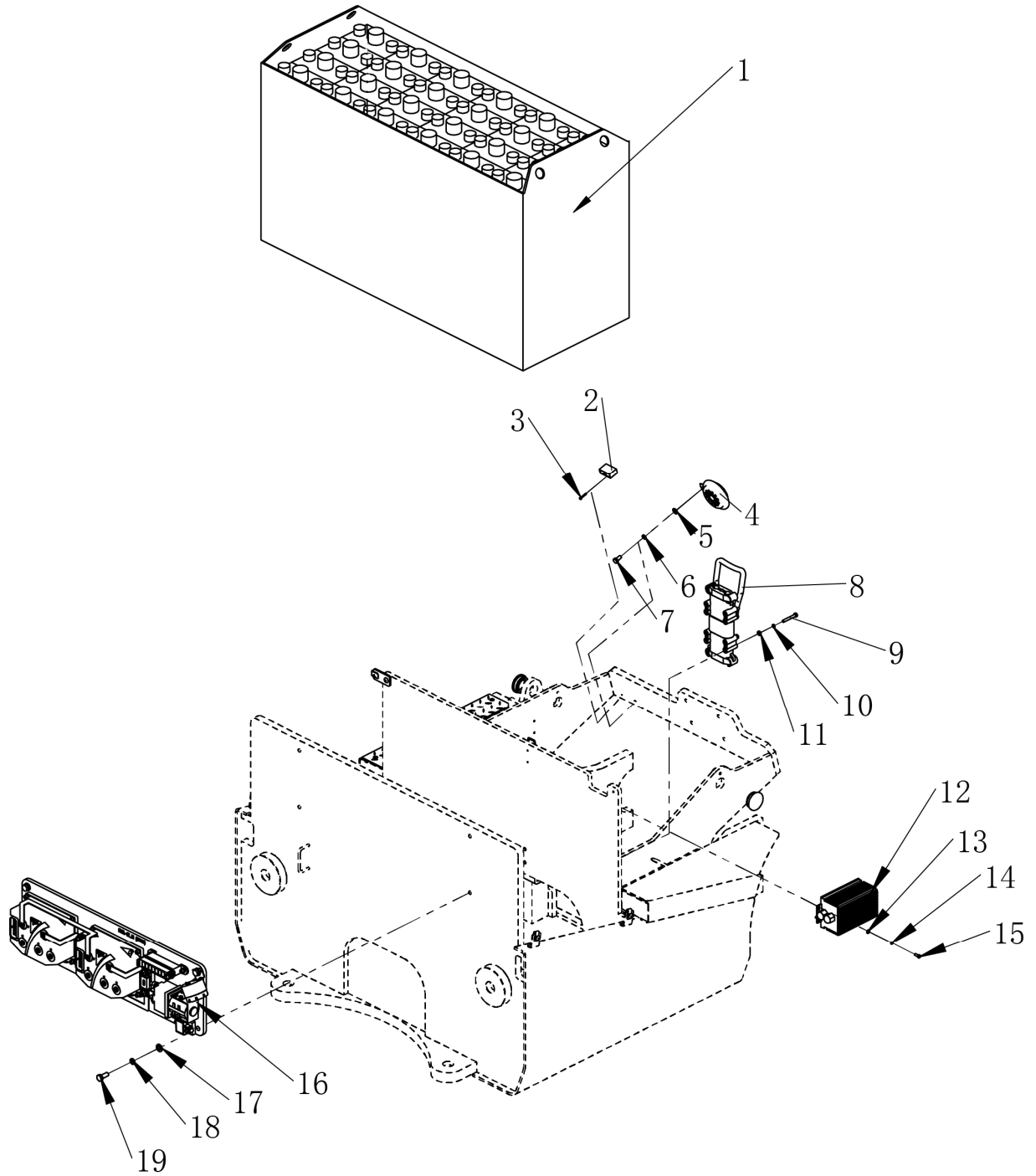


4.2 Steering assembly

No.	Code	Description	Specification	QTY	Remark
1	DCQ15-02	Cylinder liner assembly		1	
2	DCQ15-01	Pivoting support		1	
3	DCQ15-03	Nut		1	
4	DCQ15-04	Support gear shaft		1	
5	DCQ15-05	bushing		1	
6	GB3452.1-92	O-sharp rubber seal ring		1	
7	GB/T297-94	Tapered Roller Bearings		1	
8	GB/T297-94	Tapered Roller Bearings		1	
9	DCQ15-07	Framework oil seal		1	
10	DCQ15-08	Framework oil seal		2	
11	GB/T297-94	Tapered Roller Bearings		2	
12	DCQ15-06	Steering wheel shaft		1	
13	GB/T297-94	Tapered Roller Bearings		2	
14	GB/T97.1-2002	Flat washer		2	
15	GB/T6180-1986	Hexagon Slotted Nut		2	
16	GB/T91-2000	Cotter pin		2	
17	DCQ15-10	Rim cover		2	
18	DCQ15-11	Rim		2	
19	DCQ15-12	U-shaft seal ring		4	
20	DCQ15-13	Support ring		2	
21	DCQ15-09	Piston rod body		1	
22	GB/T119-2000	Cylindrical pin		1	
23	GB858-1988	Round nut with stop washer		1	
24	GB3452.1-92	O-sharp rubber seal ring		1	

5 Electrical System

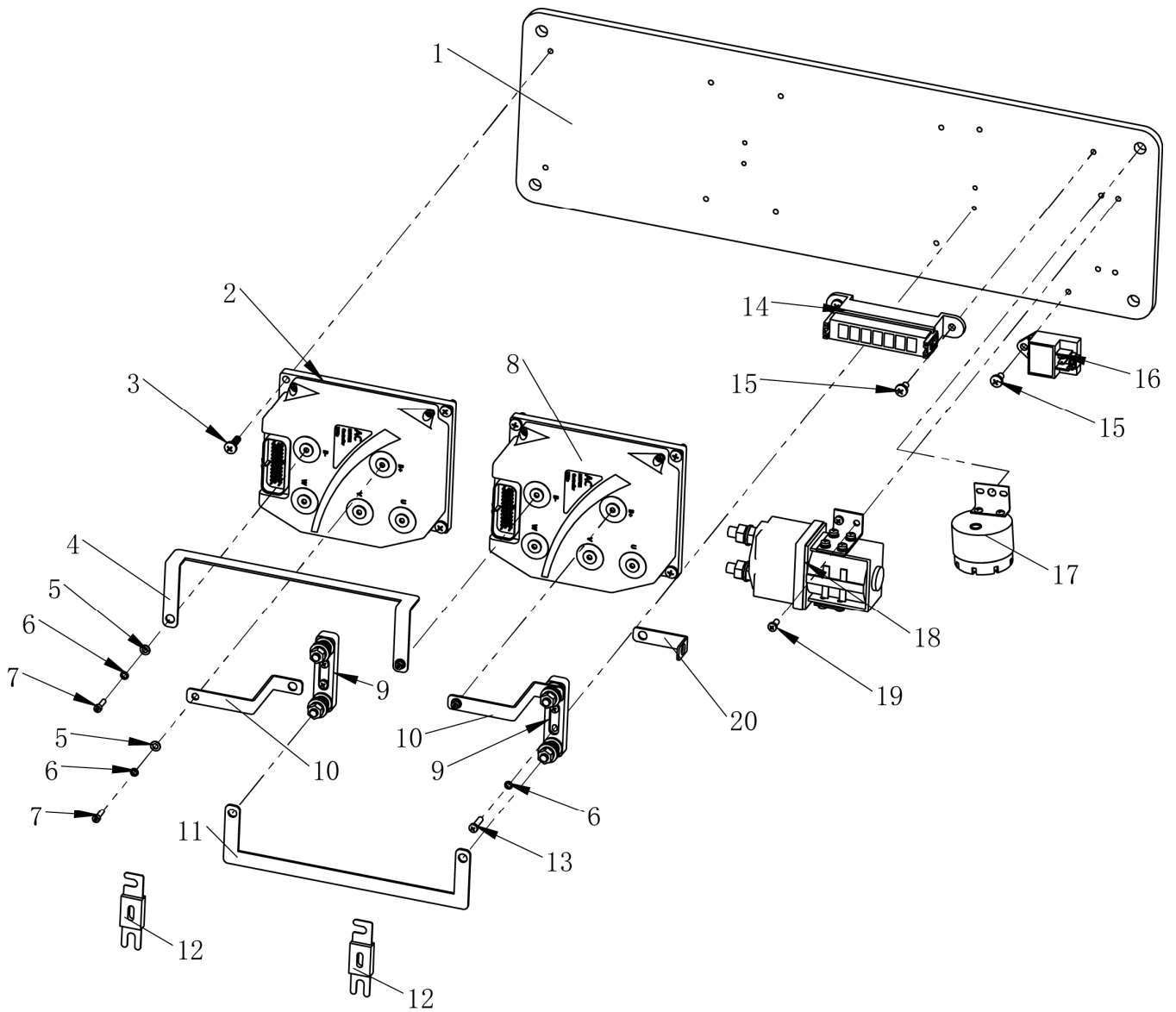
5.1 Electrical System



5.1 Electrical System

No.	Code	Description	Specification	QTY	Remark
1	02.XDC.2254	Battery (5DB350)	48V/425AH	1	
2	02.01.2243	filter	ZC-131	1	
3	03.0130	Hexagon socket head cap screws	M3×20	1	GB/T 70.1-2000
4	02.01.2218	Horn	24V	1	
5	03.0050	Flat washer	Φ8	11	GB/T97.1-2002
6	03.0012	Spring washer	Φ8	9	GB/T93-1987
7	03.0373	Hexagon bolts full thread	M8×16	3	GB/T5783-2000
8	02.01.21902	Connector			
9	03.04091	Hexagon bolt	M6×45	4	GB/T5782-2000
10	03.0011	Spring washer	Φ6	4	GB/T93-1987
11	03.0049	Flat washer	Φ6	4	GB/T97.1-2002
12	02.01.21480	Full AC DC converter	48-24V/300W	1	
13	03.0055	Flat washer	Φ5	6	GB/T95-2002
14	03.0007	Spring washer	Φ5	6	GB/T93-1987
15	03.02267	Cross recessed pan head screw	M5×14	4	GB/T818-2000
16	02.DKZC.3364	Electronic control assembly		1	
17	03.0043	Flat washer	Φ10	18	GB/T95-2002
18	03.0014	Spring washer	Φ10	12	GB/T93-1987
19	03.0779	Hexagon bolts full thread	M10×25	14	GB/T5783-2000

5.2 Electronic control assembly

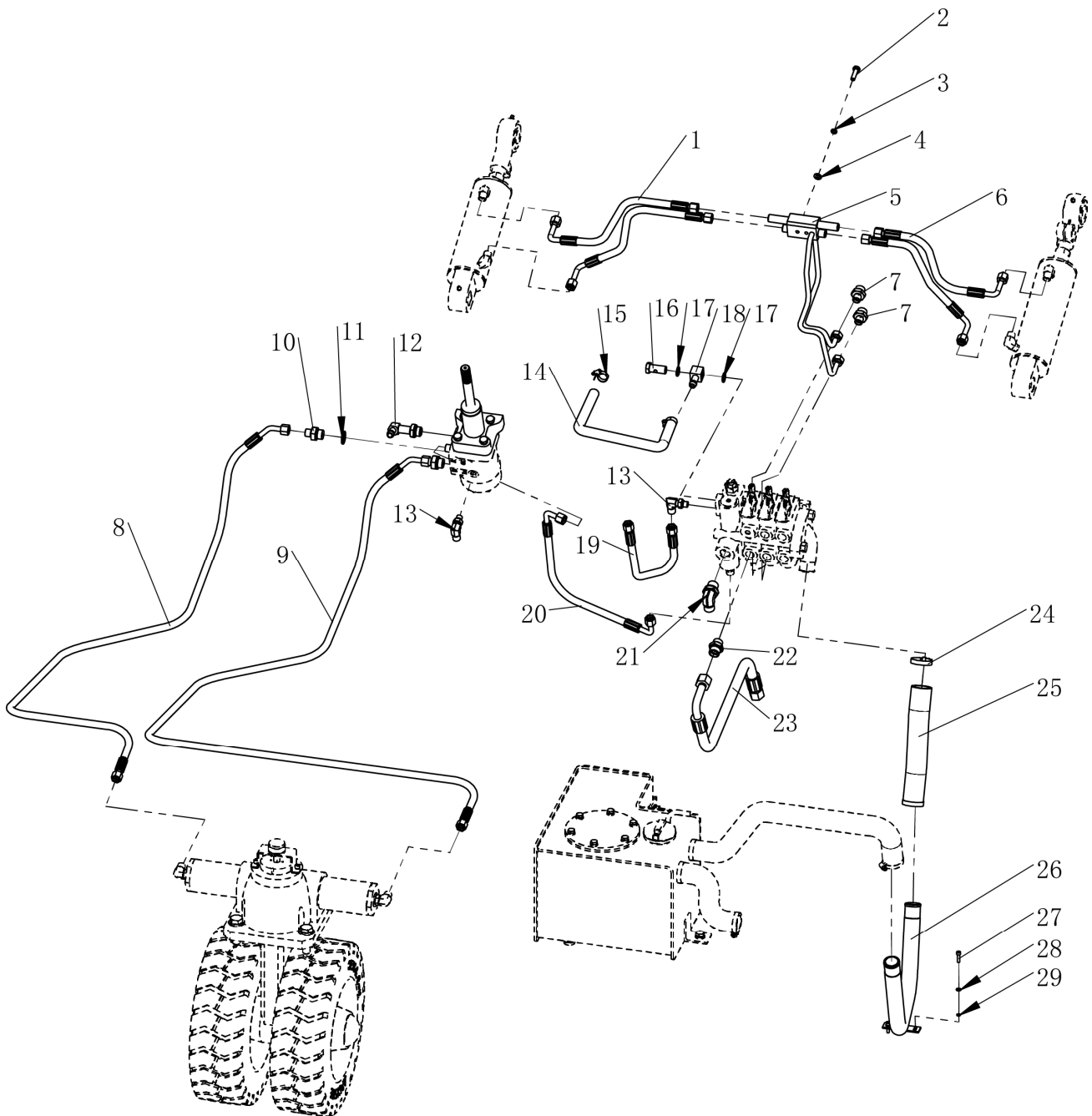


5.2 Electronic control assembly

No.	Code	Description	Specification	QTY	Remark
1	02.01.0330	Electric control aluminum plate		1	
2	02.KZQ.2306	Pump control	1232SE-5321	1	
3	03.0233	Cross recessed pan head screw	M6×20	8	GB/T 818-2000
4	16.00010-3	B-Connecting strip		1	
5	03.0055	Flat washer	Φ5	4	GB/T95-2002
6	03.0007	Spring washer	Φ5	8	GB/T93-1987
7	03.0133	Hexagon socket head cap screws	M5×16	4	GB/T 70.1-2000
8	02.KZQ.2305	Driving controller	1234SE-5421	1	
9	02.01.3057	Fuse base	SY Y	2	
10	16.00010-2	B+ connection copper bar		2	
11	16.00010-4	Insurance connection strip		1	
12	02.01.20001	Fuse	300A	2	
13	03.0232	Cross recessed pan head screw	M5×16	4	GB/T 818-2000
14	19.0773	fuse box assembly		1	
15	03.0227	Cross recessed pan head screw	M6×12	3	GB/T 818-2000
16	02.01.3354	Electronic flasher		1	
17	19.0362	Reversing buzzer		1	
18	02.01.21620	Main contactor		1	
19	03.02267	Cross recessed pan head screw	M5×14	4	GB/T 818-2000
20	16.00010-6	Main contactor copper bar		1	

6 Hydraulic system

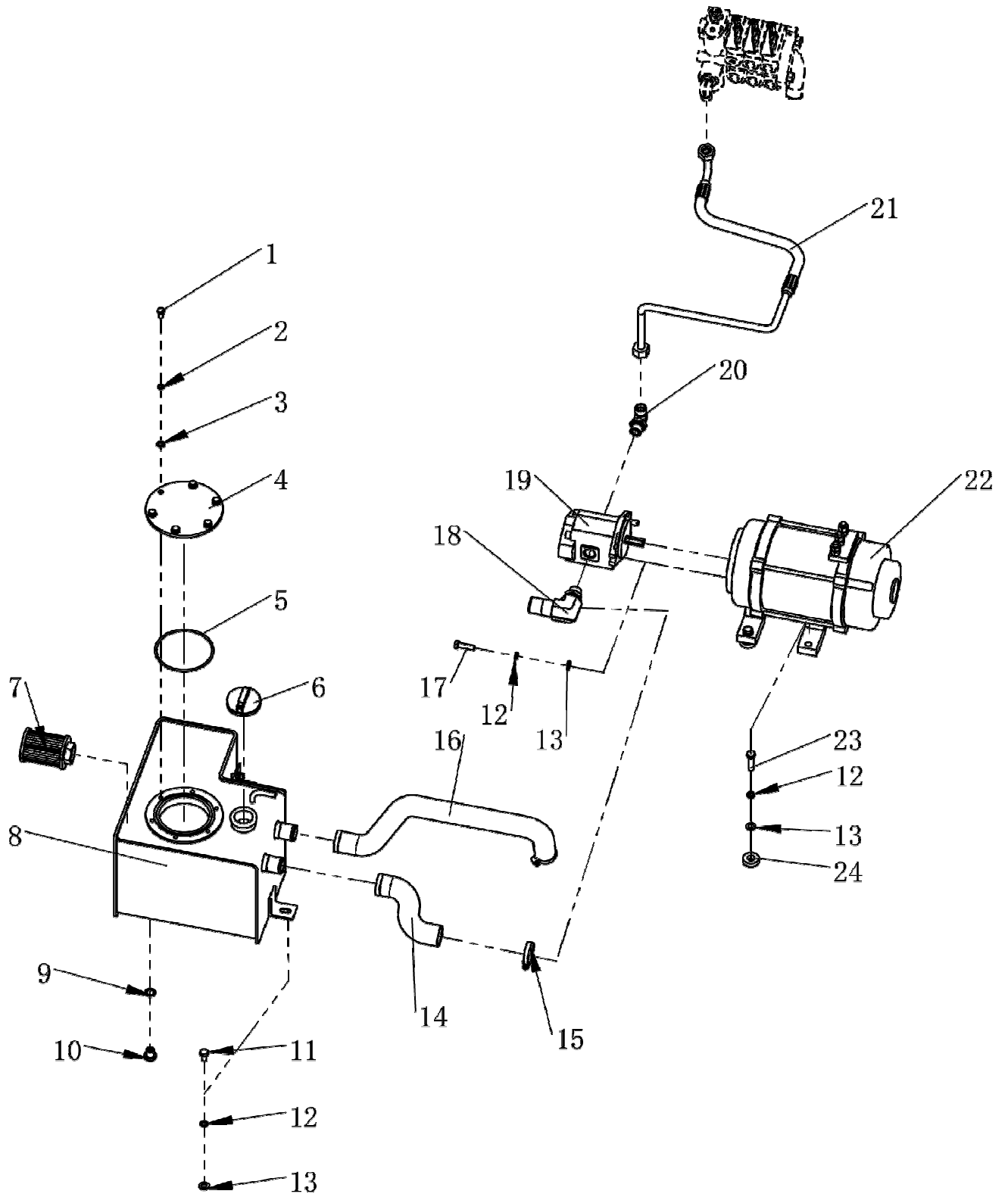
6.1 Hydraulic line I



6.1 Hydraulic line I

No.	Code	Description	Specification	QTY	Remark
1	02.YYL.2357	Tilt tubing A		2	
2	03.0381	Hexagon bolts full thread	M8×35	2	GB/T5783-2000
3	03.0012	Spring washer	Φ8	2	GB/T93-1987
4	03.0050	Flat washer	Φ8	2	GB/T97.1-2002
5	02.YYL.2336	Tilt steel pipe welding		1	
6	02.YYL.2395	Tilt tubing B		2	
7	02.01.324324	Straight joint		2	
8	02.YYL.2352	Steering hoseB		1	
9	02.YYL.3802	Steering hose		1	
10	02.01.3221	Straight joint		3	
11	03.0485	Combination gasket	Φ20	3	GB982-77
12	02.01.2354	Right Angle Connector		1	
13	02.01.2337	Right angle adjustable joint		2	
14	02.YYL.2370	Steering oil outlet pipe		1	
15	03.0619	Hoop	Φ19-29	2	
16	02.YYL.2393	Hollow bolt		1	
17	03.0483	Combination gasket	Φ16	3	GB982-77
18	02.YYL.2394	Steering oil return adapter		1	
19	02.YYL.2344	Steering tubing		1	
20	02.YYL.2353	Steering tubing (inlet opening)		1	
21	02.01.31040	Right angle adjustable joint		1	
22	02.01.324322	Straight joint		1	
23	02.YYL.2345	Lifting tubing		1	
24	03.0881	Hoop	Φ32-44	2	
25	02.YYL.2381	Oil return pipe		1	
26	30.30.0346	Oil return steel pipe welded		1	
27	03.0141	Hexagon socket head cap screws	M5×20	2	GB/T 70.1-2000
28	03.0007	Spring washer	Φ5	2	GB/T93-1987
29	03.0055	Flat washer	Φ5	2	GB/T95-2002

6.2 Hydraulic line II

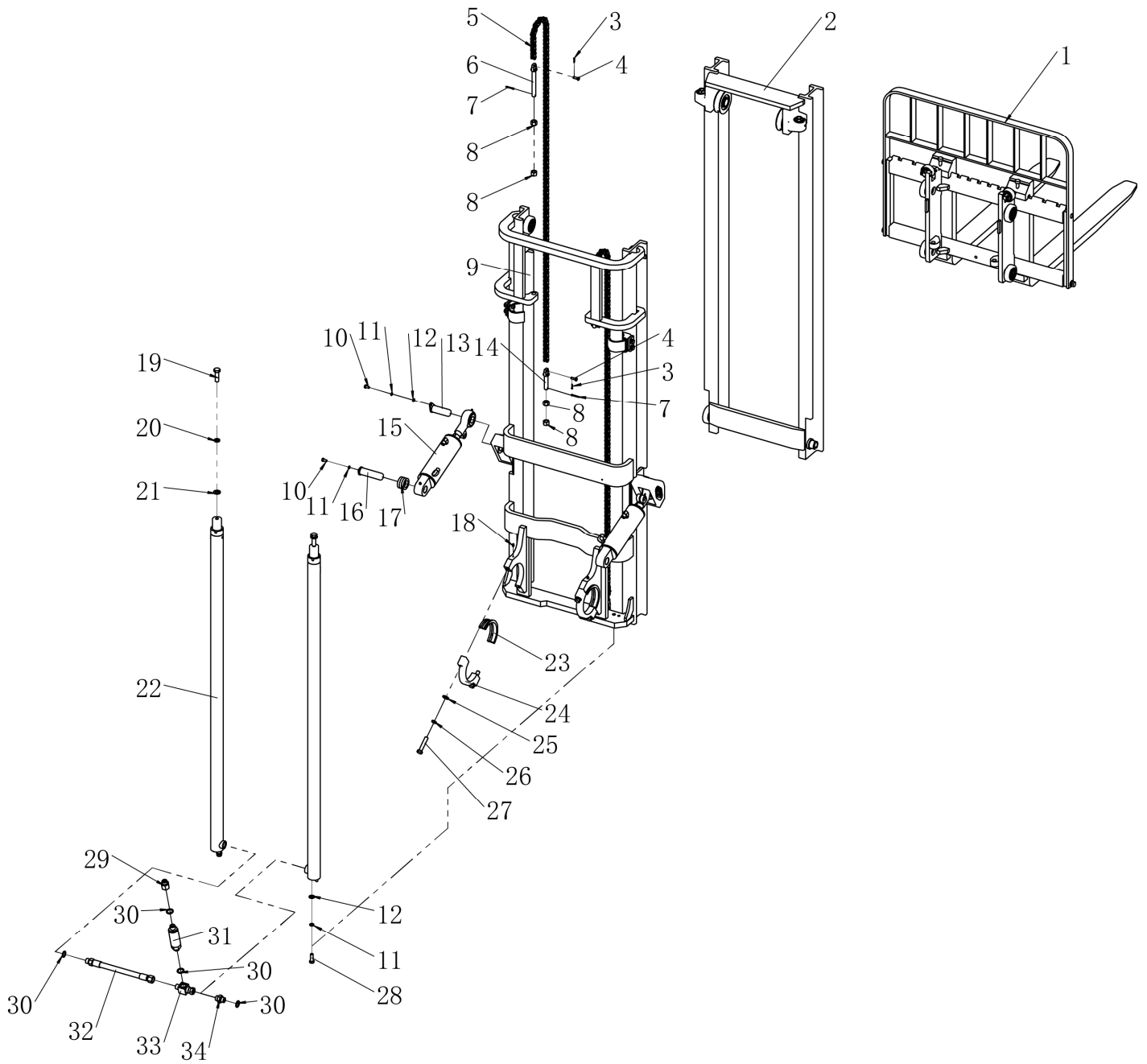


6.2 Hydraulic line II

No.	Code	Description	Specification	QTY	Remark
1	03.0373	Hexagon bolts full thread	M8×16	6	GB/T5783-2000
2	03.0012	Spring washer	Φ8	6	GB/T93-1987
3	03.0050	Flat washer	Φ8	6	GB/T97.1-2002
4	30.65.0005	Oil box cover plate		1	
5	03.05157	O type rubber sealing ring	115×3.55	1	GB 3452.1-92
6	02.01.01396	Oil Box cover		1	
7	02.01.32978	Filter	WU63	2	
8	30.30.0346	Fuel tank welding		1	
9	03.0483	Combination gasket	Φ16	1	GB982-77
10	02.01.30800	Plug	M16×1.5	1	
11	03.0864	Hexagon bolts full thread	M10×18	2	GB/T5783-2000
12	03.0014	Spring washer	Φ10	8	GB/T93-1987
13	03.0043	Flat washer	Φ10	8	GB/T97.1-2002
14	30.01.6650	Pump inlet pipe		1	
15	03.0881	Hoop	Φ32-44	4	
16	30.01.6651	Oil return pipe		1	
17	03.0777	Hexagon bolts full thread	M10×35	2	GB/T5783-2000
18	02.YYL.2384	Pump right angle adjustable joint		1	
19	02.01.00961	Gear pump	14.55CC	1	
20	02.01.31040	Right angle adjustable joint		1	
21	02.YYL.2389	Multi-way valve inlet steel pipe		1	
22	02.DJ.00827	Lifting motor	48V/7.7KW	1	
23	03.0354	Hexagon bolts full thread	M10×40	4	GB/T5783-2000
24	02.01.2358	Motor Pad		4	

7 Lifting system

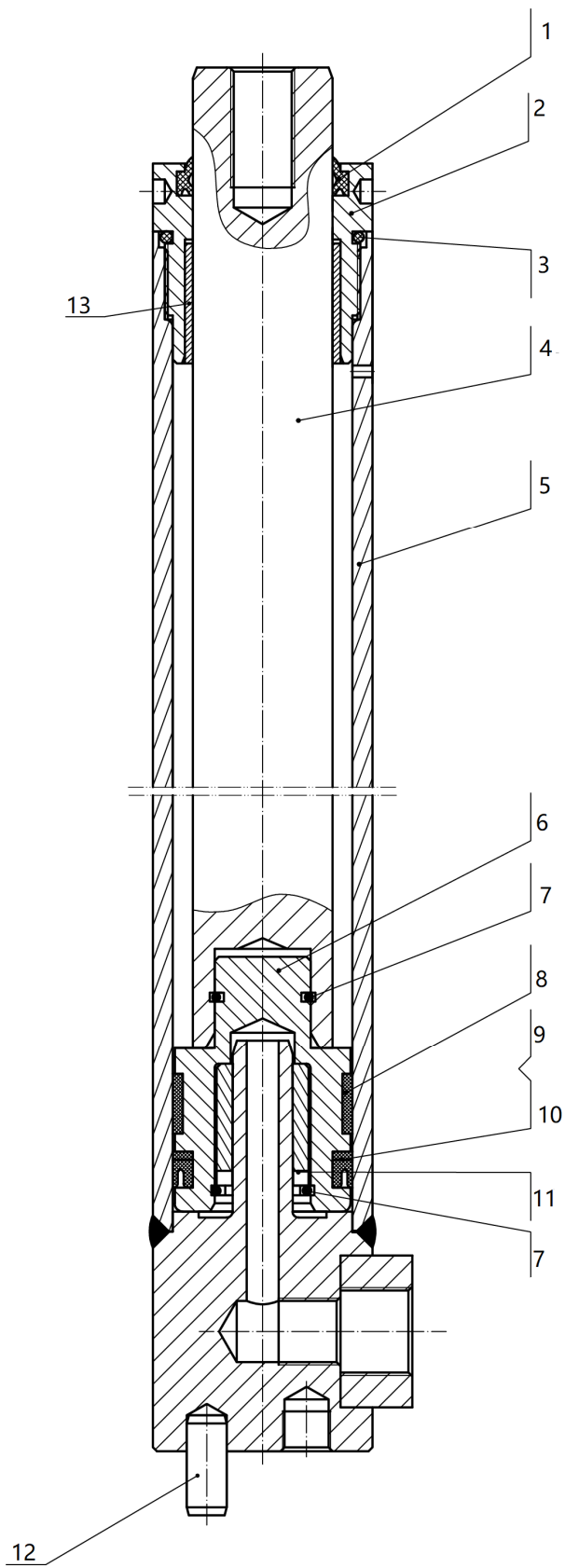
7.1 Door fram assembly



7.1 Door fram assembly

No.	Code	Description	Specification	QTY	Remark
1	82.47.0019	Fork holder assembly		1	
2	82.47.0018	Inner mast assembly		1	
3	03.0557	Cotter pin	Φ3×20	4	GB/T 91-2000
4	03.03202	Tie rod pin		4	
5	02.LT.31720	Chain	109piece	2	
6	30.05.158	Chain rod		2	
7	03.0339	Cotter pin	Φ4×30	4	GB/T 91-2000
8	03.0260	Hexagon nut	M16	8	GB/T6170-2000
9	82.47.0017	Inner mast assembly		1	
10	03.0373	Hexagon bolts full thread	M8×16	4	GB/T5783-2000
11	03.0012	Spring washer	Φ8	6	GB/T93-1987
12	03.0050	Flat washer	Φ8	4	GB/T97.1-2002
13	33.019.0021	Tilt cylinder Pin shaft welded		2	
14	30.01.0214	Chain rod		2	
15	02.01.2323	Tilt cylinder assembly		2	左右对称各一件
16	33.034.0003	Tilt cylinder Pin shaft welded		2	
17	30.24.0006	Cylinder side gasket		6	
18	03.0505	Grease fitting	M6	2	
19	03.0669	Hexagon bolt fine thread	M16×50×1.5	2	GB/T 5786-2000
20	03.0017	Spring washer	Φ16	2	GB/T 93-1987
21	03.0047	Flat washer	Φ16	2	GB/T 95-2002
22	02.YG.2291	Lifting cylinder assembly		2	
23	02.01.0328	Bush		2	
24	30.01.0217	Front axle hoop		2	
25	03.0045	Flat washer	Φ14	4	GB/T 97.1-2002
26	03.0016	Spring washer	Φ14	4	GB/T 93-1987
27	03.0919	Hexagon bolts full thread	M14×70	4	GB/T 5783-2000
28	03.0786	Hexagon bolts full thread	M12×35	2	GB/T 5783-2000
29	02.01.324330	Connector		1	
30	03.0486	Combination gasket	Φ22	4	
31	02.01.01001	Speed limit valve	XSF-F16L-40-1.5T	1	
32	02.YYL.2378	High-pressure hose		1	
33	02.YYL.2390	Tee connector			
34	02.01.3444	Straight joint		1	

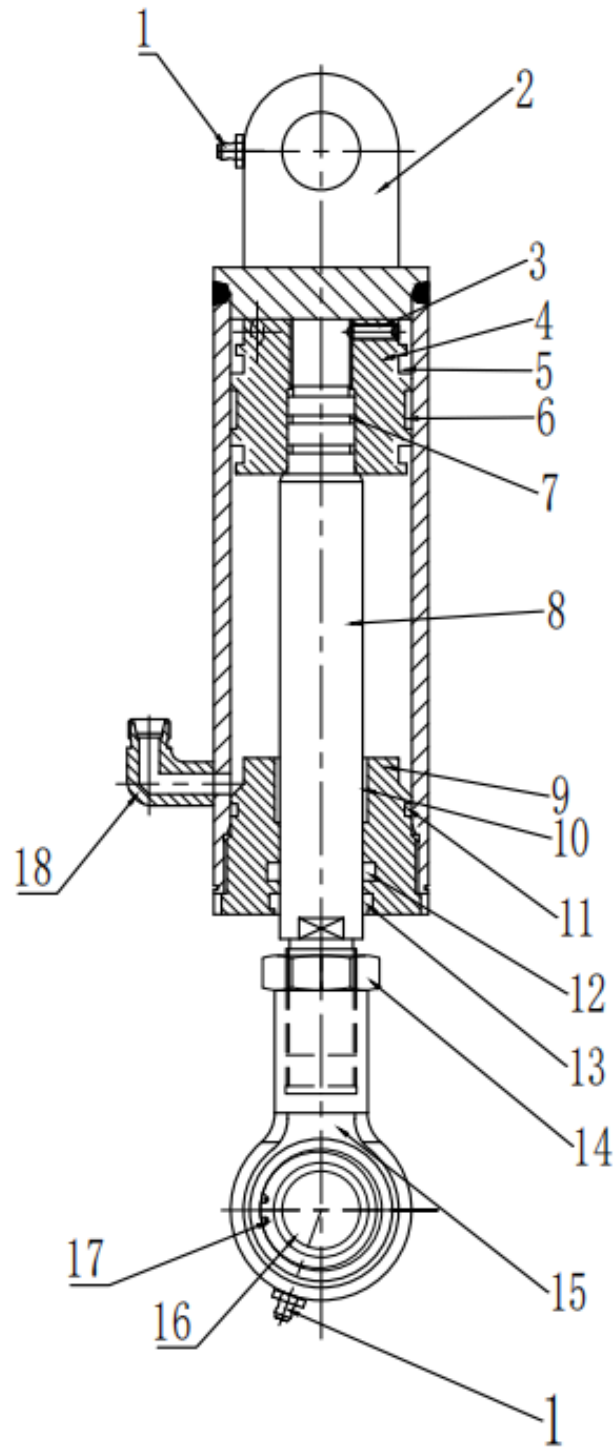
7.2 Lifting cylinder assembly



7.2 Lifting cylinder assembly

No.	Code	Description	Specification	QTY	Remark
1	DH35	Dust ring	35×43×5/6.5	1	
2	3218-413000-30	Cylinder head		1	
3	ORD5024	O-ring	50×2.4	1	
4	E15A-05.4-100	Piston rod		1	
5	E15A-05.4-200	Cylinder Body		1	
6	3218-414000-30	Piston		1	
7	2125-416000-00	Steel cable baffle ring		2	
8	GR454015	Support ring	45×40×15	1	
9	UND45356	Sealing ring	45×35×6	1	
10	SF45352	Baffle	45×35×2	1	
11	CK10-414000-30	Cushion cover		1	
12	GB/T119.1	Cylindrical pin	Φ10×25	1	
13	GB3530	Steel back bearing	39×35×30	1	

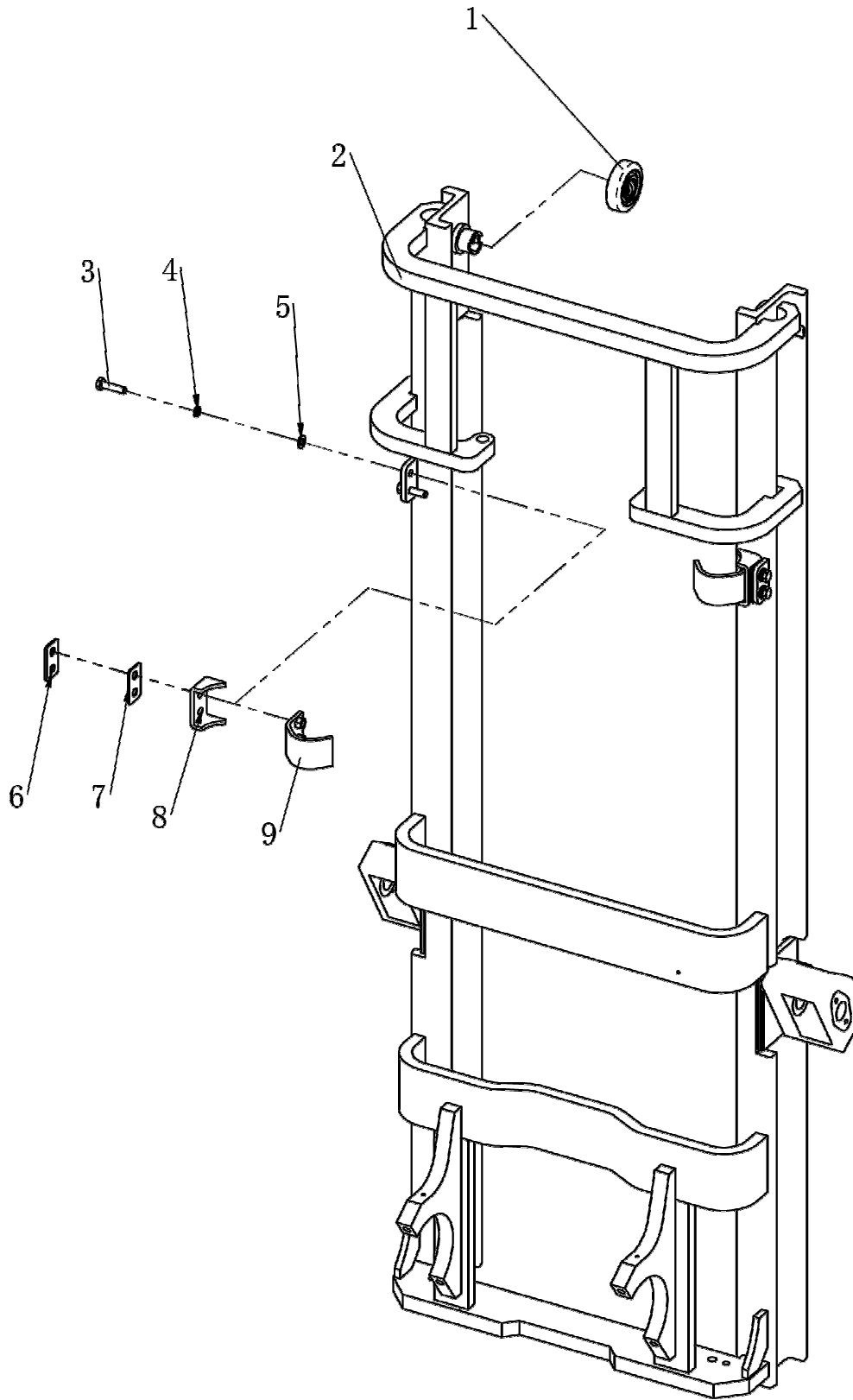
7.3 Tilt cylinder assembly



7.3Tilt cylinder assembly

No.	Code	Description	Specification	QTY	Remark
1	GB1152-89	Oil cup	M10×1	2	
2	E15A-05.5-1	Cylinder Body		1	
3	GB78-85	Set screw	M6×20	1	
4	E25A-05.5-2	Piston		1	
5	D: 70×60-6	Sealing ring for hole		2	
6	D: 70×15-2.5	Support ring for hole		1	
7	GB1235-76	O-ring	26×2.4	2	
8	E15A-05.5-2	Piston rod		1	
9	E15A-05.5-3	Guide sleeve		1	
10	SF-1/32×36-25	Steel back bearing		1	
11	GB3452.1	O-ring	63×3.55	1	
12	32×42-6	Sealing ring for shaft		1	
13	32×40-6.5/5	Dust ring		1	
14	GB/T6173-2000	Hexagon nut	M27	1	
15	E15A-05.5-4	Connector		1	
16	GE30ES	Centripetal joint bearing		1	
17	GB/T893.147	Clip for hole		2	
18	SL30GB-05.4	Right Angle Connector		2	

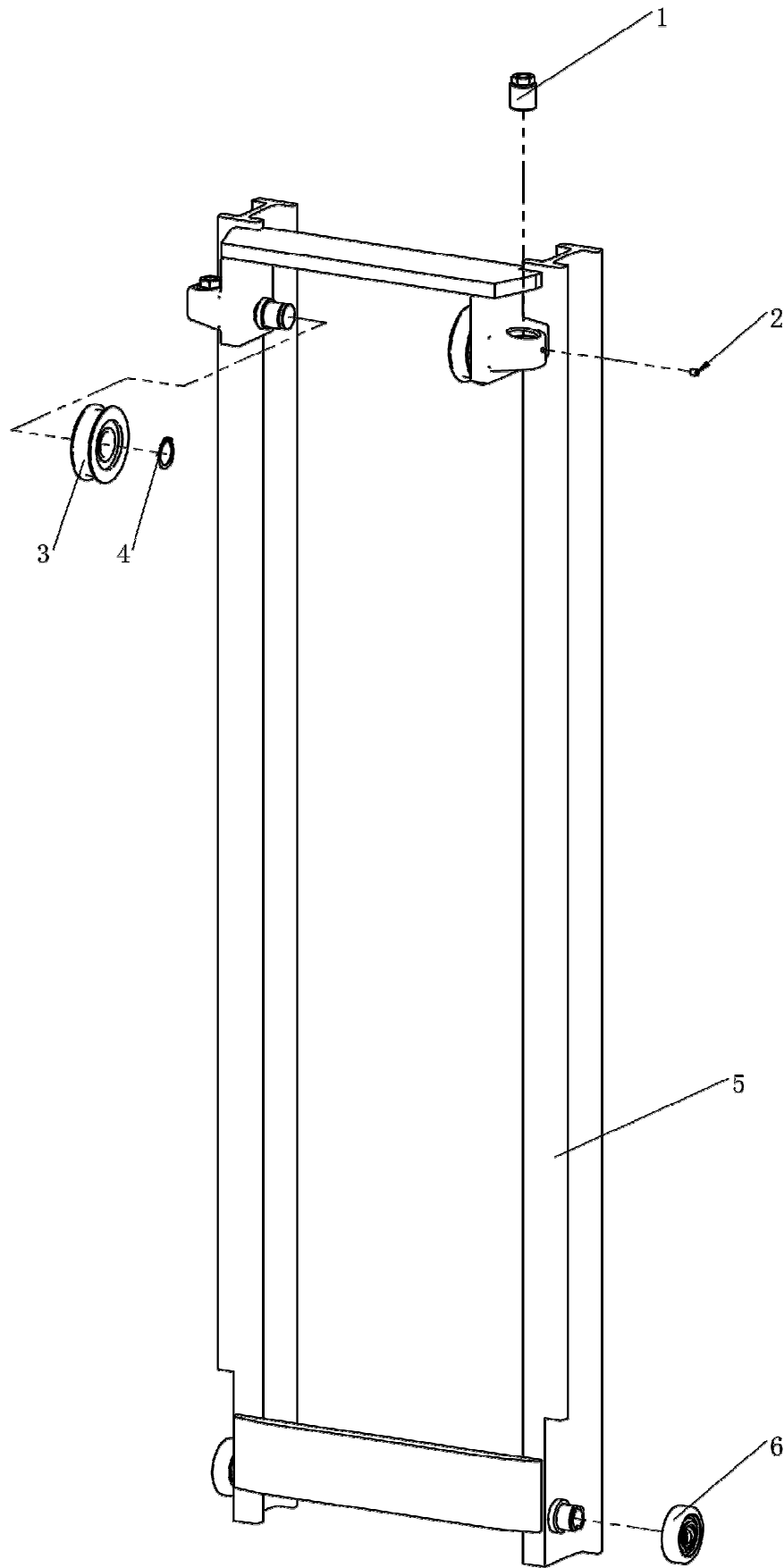
7.4 Inner mast assembly



7.4 Inner mast assembly

No.	Code	Description	Specification	QTY	Remark
1	02.01.3068	Combination roller	78.3	2	
2	33.034.0023	Outer mast welded		1	
3	03.0354	Hexagon bolts full thread	M10×40	4	GB/T5783-2000
4	03.0014	Spring washer	Φ10	4	GB/T93-1987
5	03.0043	Flat washer	Φ10	4	GB/T97.1-2002
6	30.01.0649	Hoop pad 2		2	
7	30.01.0648	Hoop pad 1		2	
8	30.01.0650	Hoop bending plate		2	
9	33.034.0024	Oil cylinder hoop welded		2	

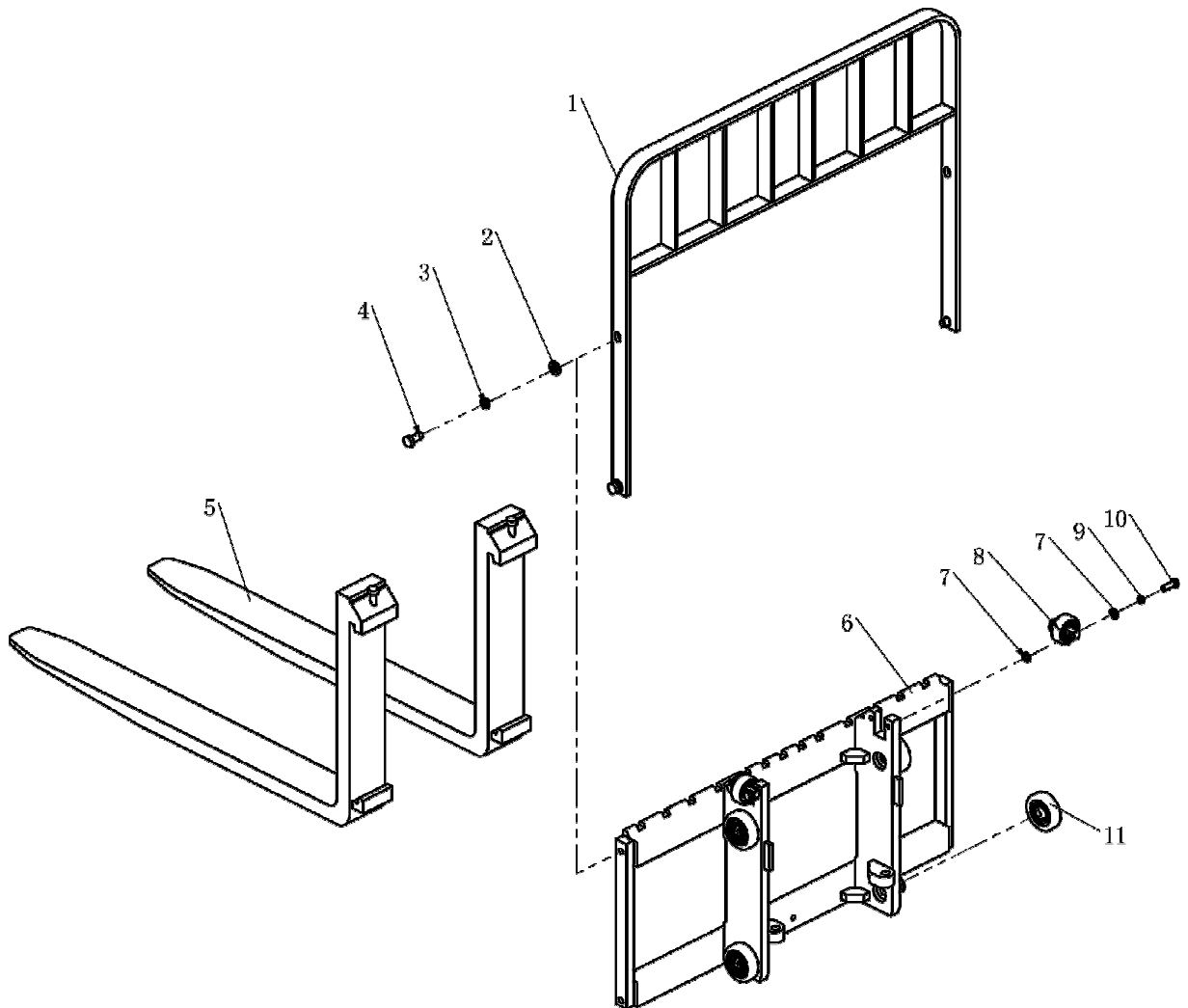
7.5 Inner mast assembly



7.5 Inner mast assembly

No.	Code	Description	Specification	QTY	Remark
1	30.33.0051	Adjustment plug		2	
2	03.0269	Hexagon socket flat end Set screw	M8×8	2	GB/T 77-2000
3	30.05.180	Mast sprocket		2	
4	03.0583	Clip for shaft	Φ35	2	GB 894.2-86
5	33.034.0025	Inner mast welded		1	
6	02.01.3068	Combination roller	78.3	2	

7.6 Fork holder assembly



7.6 Fork holder assembly

No.	Code	Description	Specification	QTY	Remark
1	33.034.0026	Shelf welding		1	
2	03.0045	Flat washer	Φ14	4	GB/T 95-2002
3	03.0016	Spring washer	Φ14	4	GB/T 93-1987
4	03.0360	Hexagon bolts full thread	M14×30	4	GB/T 5783-2000
5	02.DDHC.00490	Fork		2	
6	33.034.0027	Wheel frame welding		1	
7	03.0043	Flat washer	Φ10	8	GB/T 95-2002
8	02.01.3690	Side roller	SR48D58-1T	2	
9	03.0014	Spring washer	Φ10	4	GB/T 93-1987
10	03.0778	Hexagon bolts full thread	M10×30	4	GB/T 5783-2000
11	02.01.3068	Combination roller	78.3	4	

Note: the manufacturer reserves the right of interpretation.

If have change not notice additionally!

